

KINGGates



open

AUTOMATION FOR BARRIERS
WITH BARS UP TO 4 AND 6 m LONG



Open

Automation for barriers with bars up to 4 and 6 m long

COMPLETE RANGE

Available in 2 versions with bars from 4 up to 6 m, Open barriers are the ideal solution for control access of private roads, industrial complex and public transit areas.

The 24 V direct current operator and the easy speed regulation allow a fast and intensive use, with opening time of just 3.5 seconds.

The installation is easy thanks to the possibility to assemble the bar on either the right or left hand side indifferently, and to the easy balance through a linear adjustment of the spring.

OVERALL SAFETY

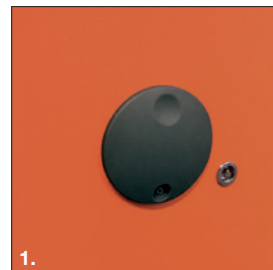
The anti-crush safety feature is guaranteed on opening and closing.

The control unit is protected by a metal frame and accessible just by a customised lock.

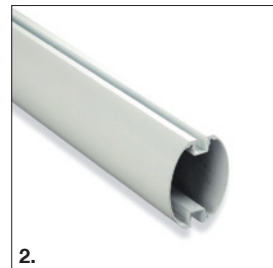
The manual opening is simple thanks to the protected release system, while the battery kit, purchasable as additional accessory, guarantees operations also in case of black-out.

ACCESSORIES

Open barriers are completed by a wide and innovative range of accessories. The painted aluminium bars are extensible through strong joints that facilitate their transport and installation. The joint for bars allows installations also in underground garages or where the height of the ceiling doesn't allow the installation of standard bars. The led lights efficaciously signal the opening and closing of the bar.



1.



2.



3.

1. RELEASE SYSTEM

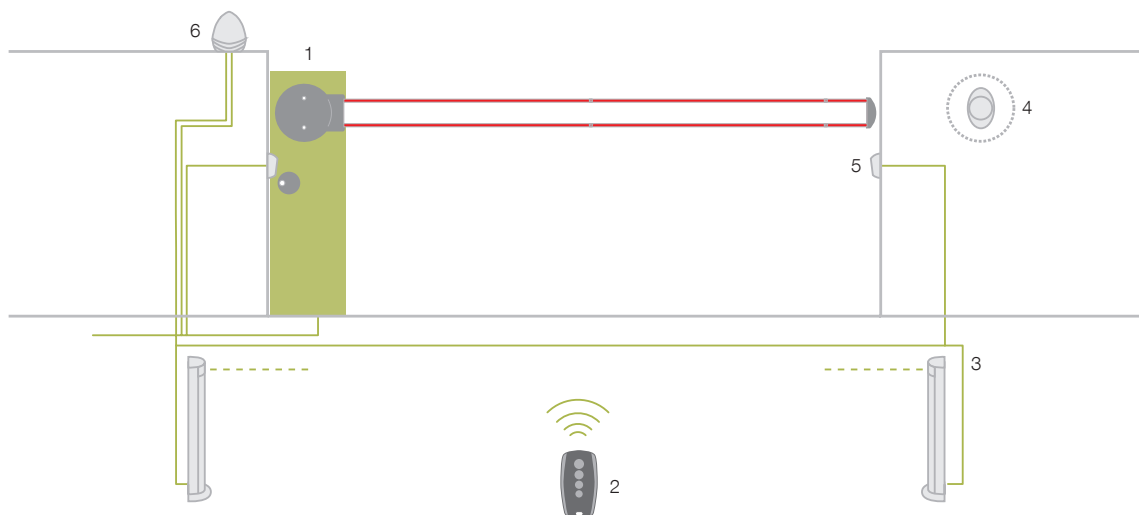
Strong and reliable key release system

2. BAR

Elliptical profile in painted aluminium

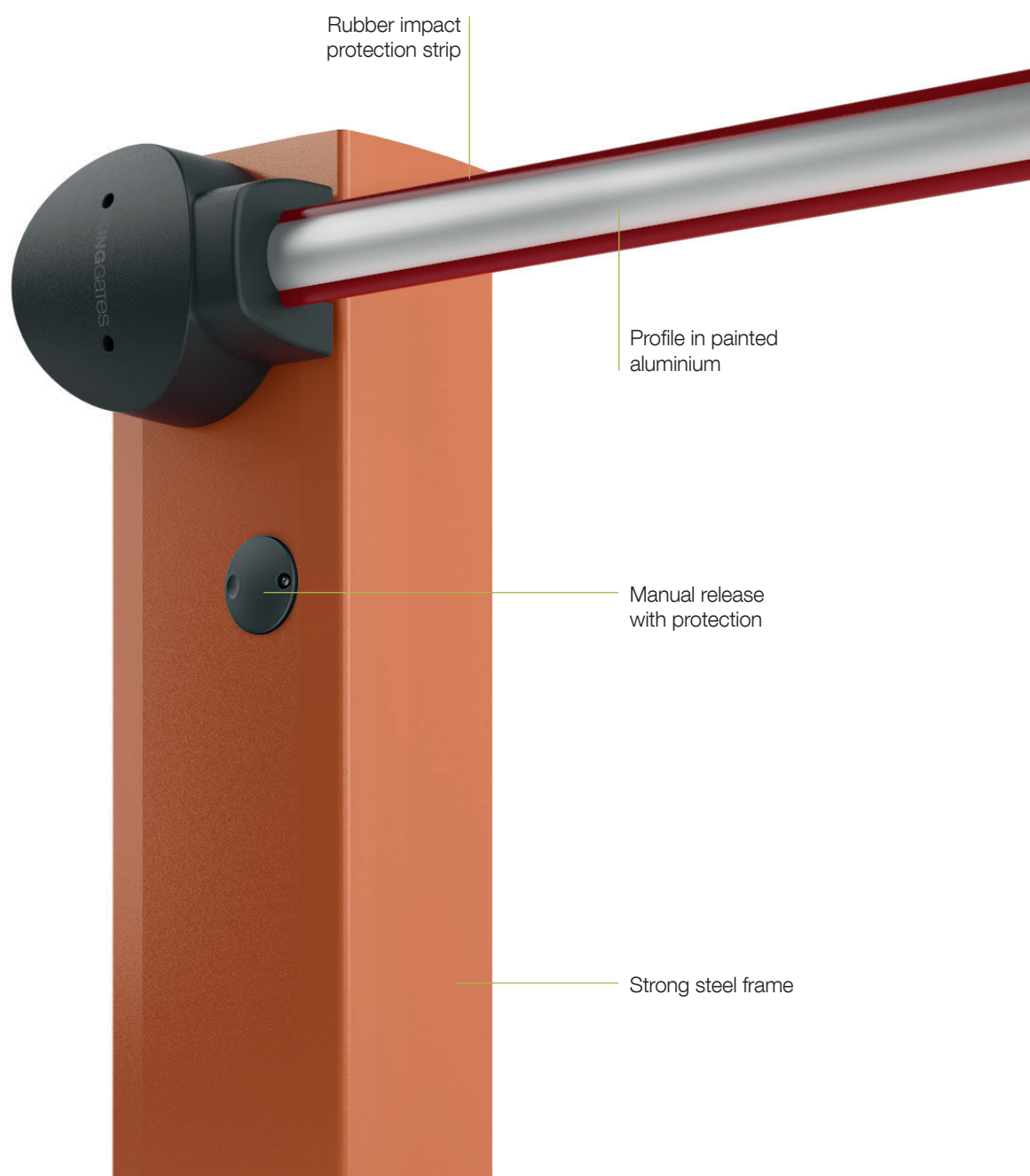
3. CONTROL UNIT

Wide lodging for control unit and electric wirings



BASIC INSTALLATION

1. Operators Open
2. Transmitter
3. Photocells mounted on posts
4. Key switch
5. Photocells
6. Flashing light


TECHNICAL DATA

Model		OPEN4000	OPEN6000
Code		36S001	36S002
Mains power supply	(Vac)	230	
Absorption	(A)	8	5
Power	(W)	180	100
Opening time	(sec)	3,5	7
Torque	(Nm)	150	220
Working cycle	cicli/ora	300	200
Protection level	(IP)	54	
Operating temperature	(°C)	-20 ÷ +70	
Dimensions	(mm)	320x220x1000 h	420x220x1050 h
Weight	(kg)	46	54

Also available in 110 V / 60 Hz version

OPEN

Model	Motor	Control unit	Radio receiver	Fixing kit	Maximum bar length
Open 4000	24 Vdc	Star Open		•	4 m
Open 6000	24 Vdc	Star Open		•	6 m

24 V version also available for markets with 110 V / 60 Hz mains power supply

Important: when applying all the optional accessories to the boom, please limit the length to a max. of mt. 5 for OPEN 6000 and 3.5 meters for OPEN 4000

ASTE

Model	Code	Bar length	Compatible with Open 4000	Compatible with Open 6000	ASOLINK joint obligatory
ASO4000	163638	4 m	•		
ASO3000	163647	3 m		•	•
ASO5000	163639	5 m		•	



OPEN 4000 + ASO 4000

Barrier complete with fixing accessories and 4 m max. bar length



OPEN 6000 + ASO 5000

Barrier complete with fixing accessories and 5 m max. bar length



OPEN 6000 + n°2 ASO 3000 + n°1 ASOLINK

Barrier complete with fixing accessories and 6 m max. bar length



ACCESSORIES

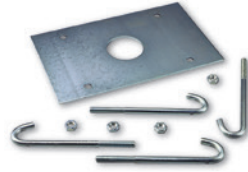
Per OPEN 4000



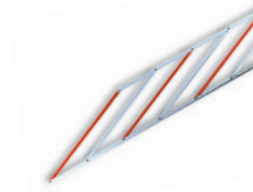
ASO4000 - COD. 163638
Bar for 4 m passage



ASOLED4000 - COD. 163651
Indicator lights for click fixture on upper or lower side of bar. 4m passage (ASORUB must be purchased together to allow fixing)



ASOB4000 - COD. 163648
Anchorage base (OPEN4000 comes with 1 set included)



ASOGRID - COD. 163650
Aluminium rack (2 m)

Per OPEN 6000



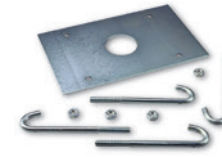
ASO3000 - COD. 163647
Bar for 3 m passage



ASO5000 - COD. 163639
Bar for 5 m passage



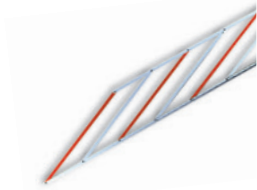
ASOLINK - COD. 163653
Expansion joint compatible with ASO 3000



ASOB6000 - COD. 163649
Anchorage base (OPEN6000 comes with 1 set included)



ASOLED6000 - COD. 163652
Indicator lights for click fixture on upper or lower side of bar. Length 6 m



ASOGRID - COD. 163650
Aluminium rack (2 m)



ASOJOINT - COD. 163640
Joint for bars ASO3000 (from 1950 mm to 2400 mm)

COMMON ACCESSORIES



ASORUB - COD. 163641
Rubber impact protection strip (9 pcs. x 1 m / package)



ASOSTICK - COD. 163642
Red adhesive reflector strips (20 pcs. / package)



RX K1 - COD. 11S003
Plug-in receiver



ASOPA - COD. 163643
Mobile stand for bars



ASOPF - COD. 163654
Adjustable stand for bars



BAT K30 - COD. 161250
Plug-in card for battery charger



BAT60 - COD. 161233
12 V, 6 Ah batteries (two batteries required for operation)



VEK1 - COD. 162241
Inductive loop detectors (single-channel)



WIRE9 - COD. CAB106
Perimeter wire (9 m)

VEK2 - COD. 162242
Inductive loop detectors (two-channel)

Inductive loop detectors

Detection system controlled by a microprocessor which enables achieving a remarkable accuracy and user notification by means of LED messages

4 adjustable sensitivity levels (for two-channels: can be set separately for each sensor)

The modular container can be fitted into the DIN rail

SINGLE-CHANNEL DETECTOR

2 output relays: 1 permanent, 1 pulse

The permanent output relay can be set normally open or normally closed

TWO-CHANNEL DETECTOR

Presence detection function: reports the presence of a vehicle through relay 1 and relay 2 pulse when the vehicle leaves the sensor

Transit direction detection function (output that can be set either to fixed or pulse): activation of relay 1 for a transit direction and the other relay for the other direction



TECHNICAL DATA

Model		VEK1	VEK2
Code		162241	162242
Power supply	(Vac/dc)	24 (+/- 10%)	
Absorbed power	(W)	1,5	2
Outputs (relay switch)	(relay switch)	1 permanent relay 1 pulse relay	2 permanent relays
Frequency	(KHz)	30 ÷ 130	
Dimensions	(mm)	79 x 22,5 x 90	

ACCESSORIES



CAB106
Perimeter wire (9 m)



KINGGates

Brand of V2 S.p.A.

Corso Principi di Piemonte 65/67
12035 RACCONIGI CN (ITALY)