

Idol2.0 Instruction

Idol 2.0 is a remote duplicator which can copy most of rolling code and fixed code remote from 300mhz-868mhz. Can store 4 different frequency fixed or rolling code in 4 different buttons. It can even re-generate a new remote. (Table 2.0 for detailed reference)

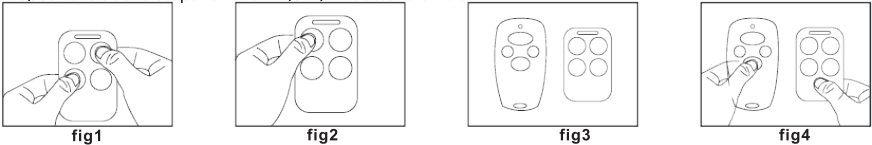
Technical data:

Frequency: 300mhz 868mhz Working current:24mA± 2mA
Working voltage: 3V or 12V optional Static current:0.4uA± 2uA or 1.4uA± 2Ua optional
Voltage: 2.4V-3.3V or 7-12V optional Working range: 50-90m in the open area

Copy fixed and rolling code remote:

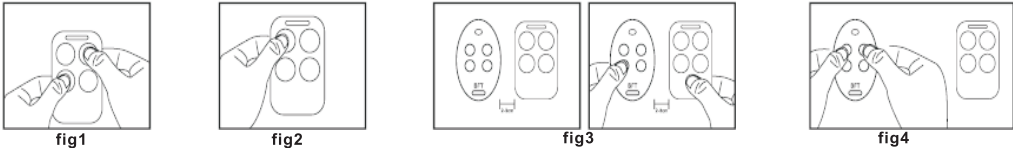
Please kindly note that all the brands in the table 3.0 can be copied by IDOL

Step1: Press together 2nd button and 3rd button for 3 seconds, the LED will be on then go off (about 1 second) till LED will be on again, release the buttons. Which means it s entering into learning mode. Please see fig 1.
Step2: Press 1st button once. Please see fig 2.
Step3: Place the original remote in front of Idol, about 2-3cm distance. Please see fig 3.
Step4: Keep pressing any button of original remote till the Idol LED blink. It means the code has been successfully stored. Please see fig 4
Please repeat the above steps for the 2nd,3rd,4th buttons of Idol.



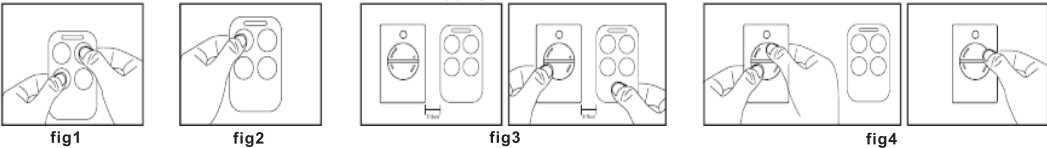
Attention: BFT, FAAC 433-868 SLH ,KINGGATES, has different operation as bellowing:
BFT

Step1: Press 2nd button and 3rd button at the same time(about 3 seconds), the LED will be on then go off (about 1 second) till LED will be on again, release the buttons. Which means it s entering into learning mode. Please see fig1.
Step2: Press 1st button once. Please see fig2.
Step3: Place BFT remote in front of Idol, about 2-3cm distance. Press any BFT button you want to copy (1-3cm distance from Idol) till Idol LED light on, release the buttons. Please see fig3
Step4: Keep pressing the 1st and 2nd button of BFT at the same time (or the rear button), till Idol LED blink, release the buttons. The above successfully copied.
Please repeat the above steps for the 2nd,3rd,4th buttons of Idol.



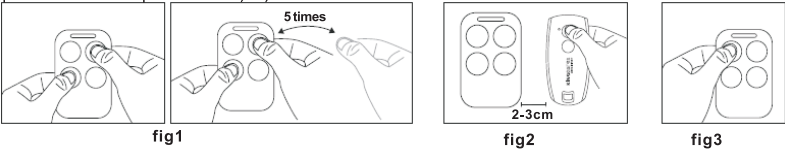
FAAC 433-868 SLH (The original FAAC remote must be MASTER remote)

Attention: verify the programming remote control is a MASTER.
Pressing whatever button, the LED has to emit a double flash rather than to switch on as a fixed light.
Step1: Press together Idol s button 2 and 3 for 3 seconds, the LED will be on then go off (about 1 second) till LED will be on again, release the buttons. Which means it s entering into learning mode. Please see fig1.
Step2: Press 1st button once. Please see fig2
Step3: Place FAAC remote in front of Idol, about 2-3cm distance. Press any FAAC button you want to copy till Idol LED light. Please fig 3.
Sept4: Press 1st and 2nd button at FAAC for 2 seconds, till FAAC remote flashes, release the buttons. Then press any button at FAAC till Idol's LED blink. It means you copy successfully.
Please repeat the above steps for the 2nd, 3rd,4th buttons of Idol.
Notification: For **GENIUS** remote, the best distance for copying is 4-7cm.



Kinggates

Step1: Long press 3rd button, then press 2nd button five times. Idol LED will short flashes. Please see fig1.
Step2: Place Motroline/Kinggates remote in front of Idol, about 2-3cm distance. Press any original button you want to copy (1-3cm distance from Idol) till Idol LED short flashes, release the buttons. Please see fig2
Step3: Press the IDOL 1st button once time, LED keep on. It's meaning learning code successfully .Please see fig3
Please repeat the above steps for the 2nd,3rd,4th buttons of Idol.



Remotely program function:

Please kindly note that all the brands in the table 1.0 can be program into original receiver

Get close to the receiver and press together Idol buttons 1 and 3 for 3 seconds, the LED will be on then go off (about 1 second) till LED will be on again, release the buttons. Which means it's entering into remotely program mode. Then press any Idols button that you already copied once, to indicate that remotely program procedure has started. After 8 seconds, wait the activation of the receiver (gate opening, lights starting, etc..) The remote control has been memorized.
Attention: If the receiver doesn t work, the “remote program function ” maybe disarmed, if so please operate it manually.
Please kindly note that fixed code remote after copying, Idol can act as the original remote and do not need to program with receiver.

Table 1.0

| List 1 | List 2 |
|---|---|
| ALLMATIC B.RO OVER, B.RO 2WN, TECH3, MINIPASS, BRO.STAR APRIMATIC TR2/4, TM4 BENINCA TO.GO2 /4 VW, TO.GO2/4 QV, IO, T2/4 VW BFT MITTO 2/4M, MITTO 2/ 4A, MITTO RCB02/04, GHIBLI, KLEIO, TRC2/ 4, RB4 MURALE CARDIN S449 TRQ449100/TRQ449200/ TRQ449300/TRQ449400, TXQ449200/TXQ449300/ TXQ449400, S486:TRQ486200/ TRQ486400, TXQ486200/ TXQ486400 DITEC GOL4, BIXLP2/2 RED, BIXLG4 FAAC XT4 433 RC, TE4433H FADINI JUBI SMALL, JUBI-2, JUBI-4 GENIUS BRAVO TE4433H, ECHO GIBIDI AU1680 WOOD, GIBIDI AU1610/1680, AU1810/1600, AU01590 AU03000 DOMINO, DTC 4334 | KING GATES STYLO 4 MHOUSE TX4, TX3, GTX4 NICE SMILO2/4, FLO1/2/4R-S,VERY VR, FLO1R-S,FLO2R-S,FLO4R-S,FLO1RE/FLO2RE/FLO4RE NOVOTECNICA BIXL2 O&O TWIN,TX2/TX4(NEO),T.COM R4-2/T.COMR4-4,T.COM R8-2/T.COM R8-4 TAU 250 SLIM RP,250 T4 RP VDS TRQ, ECO-R V2 PHOENIX 433-868, TXC, TSC, TRC, HANDY PUJOL VARIO, MARTE ADYX BRAVO, TE4433H, TE4433H BLUE PRASTEL MPSTF2/F4RE, MPSTL-1E/2E/4E, MPSTP2E/2E BLUE, MT4E/2E, BFOR, TRQ4P, TC2E, TRQ2P SOMFY TELIS 1/ 4 RTS |

Re-generate function:

If customers buy an Idol remote, but they lost their original remote, they can re-generate an original remote.
Step1: Press together 1st button and 4th button for 3 seconds, the LED will be on then go off (about 1 second) till LED will be on again, release the buttons. Which means it s entering into Re-generate mode. Please see the fig1
Step2: Press buttons to choose the brands as table 2.0. For example, if you choose BFT MITTO brand, press 1st button once, then LED flashes once.
Step3: Confirm the brand. Press 3rd and 4th button at the same time. Till LED blink, release the buttons. Now the Idol remote is functioning a new BFT MITTO remote. Please see fig2.
Note1. If you are using Idol to regenerate a FAAC 4 buttons remote, then re-generate a BFT 2 buttons remote, the in the Idol remote, 1st and 2nd button is BFT code, 3rd and 4th button is FAAC code.
Note2. If you press 1 time, the Idol s LED flashes once; If you press 2 times, the Idol's LED flashes twice and so on.



fig1



fig2

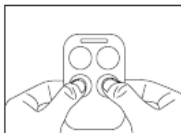


fig3

Table2.0

| Remote | Press 1 time | Press 2 times | Press 3 times | Press 4 times | Press 5 times | Press 6 times |
|------------------------|------------------|----------------|--------------------|-----------------------|---------------|---------------|
| 1 st button | BFT MITTO | BENINCA cupido | NICE SMILO | NICEFLOR-S | Motorline | |
| 2 nd button | FAAC XT4 433 SLH | CAME TOP-432NA | DITEC DOL4C | GLIDEROL 315 | SLAVE | |
| 3 rd button | SUPERLIFT | NOVA | V2 PHOENIX2 | DOORHAN TRANSMITTER 4 | KINGGATES | |
| 4 th button | BOSS BHT4 | ATA PTX4 | SOMMER 4020 868MHZ | ROGER | | Merlin 2.0+ |

Complete copy brands list Table 3.0

| BRAND | MODLE NO. | FUNCTION |
|----------------------------------|---|---|
| ADYX | BRAVO.TE4433H,TE4433H BLUE | Need to activate the receiver |
| ALLMATIC | B.RO OVER, B.RO 2WN, TECH3, MINIPASS, BRO.STAR | Remotely program function |
| ALUTECH | | Need to activate the receiver |
| APERTO (SOMMER) | TX02-434-2, TX02-868-2 BLUE, 4025 TX02-868-2, 4022 TX02434-2, 4020 TX-03-868-4, 4013 TX03-434-4 | Need to activate the receiver |
| APRIMATIC | TR2/TR4, TM4 | Remotely program function |
| ATA | PTX4 BLUE/PTX 4 PINK | Need to activate the receiver |
| BALLAN | FM404B,4013 | Need to activate the receiver |
| BENINCA | TO.GO2 VW/TO.GO4 VW, TO.GO2 QV, TO.GO4 QV, IO, T2 VW/TO.GO4 VW, APPLE, LOT2WCV | Remotely program function |
| BFT | MITTO 2M/MITTO4M, MITTO 2A/ MITTO 4A, MITTO RCB02/MITTORCB04, GHIBLI, KLEIO, TRC2/ TRC4, RB4 MURALE | Remotely program function |
| BOSS | BHT4 | Note! Fixed Code Match Receiver directly |
| CAME | TAM 432 SA, TOP 432 NA/TOP 434 NA, TOP 432 SD, TOP 432 EV/TOP 434 EV | Note! Fixed Code Match Receiver directly |
| CARDIN | S449 TRQ449100/TRQ449200/ TRQ449300/TRQ449400, TXQ449200/TXQ449300/ TXQ449400, S486:TRQ486200 TRQ486400, TXQ486200/ TXQ486400 | Remotely program function |
| CHAMBERLAIN/LIFTMASTER/MOTORLIFT | 94335E, 4333E, 4335E, 94334E, 4333EML, 4335EML, 84334EML, 4335EML | Need to activate the receiver |
| CLEMSA | MUTANCODE.MASTERCODE MV | Note! Fixed Code Match Receiver directly |
| DEA | TR2 /4 MIO,GENIE R, TS2/4 MIO 868/ 868 | Need to activate the receiver |
| DASPI | ZERO 2 RC/ZERO4 RC | Need to activate the receiver |
| DITEC | GOL4, BIXLP2/2 RED, BIXLG4 | Remotely program function |
| DOORHAN | TRANSMITTER 4 | Need to activate the receiver |
| ECOSTAR | RSE,RSC,RSZ | Need to activate the receiver |
| FAAC | XT4 433 RC, TE4433H | Remotely program function |
| FAAC | XT2/XT4 433 SLH, XT2/XT4 868 SLH, XT2/XT4 433 SLH LR, XT2/XT4 868 SLH LR, T2/T4 433 SLH, T2/ T4 868 SLH, TML2/TML4 433 SLH, TML2/TML4 868 SLH, DL2/DL4 868 SLH. | Remotely program function |
| FADINI | JUBI SMALL, JUBI-2, JUBI-4 | Remotely program function |
| GENIE | GITR-3,GIT,GICT390,GIFT390-1,G3T-BX,G1T-BX,GM3T,G1CTD,GIFTD | Need to activate the receiver |
| GENIUS | BRAVO TE4433H, ECHO | Remotely program function |

| | | |
|----------------|--|---|
| GENIUS | JA332 AMIGO 2 868,JA334 AMIGO 4, AMIGOLD 2/AMIGOLD 4, KILO 2/KILO 4 433 JLC, KILO2/KILO4 868 JLC | Need to activate the receiver |
| GIBIDI | AU1680 WOOD, GIBIDI AU1610, GIBIDI AU1680, AU1810, AU1600,AU01590 AUO3000 DOMINO, DTC 4334 | Remotely program function |
| GLIDEROL | 315MHZ | Need to activate the receiver |
| HORMANN | HSM4 868MHZ,HSE2-868-BS,HS 4 BS | Note! Fixed Code Match Receiver directly |
| KEY | 900TXB - 42R, SUB44, TXB-44R, TXG-44R | Need to activate the receiver |
| KING GATES | STYLO 4 | Need to activate the receiver |
| LABEL | SPYCO | Need to activate the receiver |
| LINEAR | MCT-11,ACT-21,ACT-22,STINGRAY ACT-31,STING RAY ACT-34B | Need to activate the receiver |
| MHOUSE | TX4, TX3, GTX4 | Remotely program function |
| MERLIN + 2.0 | E945M, E943M, E940M, E940M | Need to activate the receiver |
| MERLIN/PROLIFT | M230T(PROLIFT),M430R(PROLIFT) | Need to activate the receiver |
| MERLIN | M842, M832, M844, C945, C940, C943 | Need to activate the receiver |
| MOOVO | MT4 | Remotely program function |
| MOTORLINE | | Need to activate the receiver |
| NICE | ONE:ON1/ON2/ON4/ON9,ONE ERA:ON1E/ON2E/ON4E/ON9E, INT11, INT12 | Remotely program function |
| NICE | SMILO2/SMILO4, FLO1R-S, FLO2RS,FLO4R-S, VERY VR, FLO1RE/ FLO2RE/FLO4RE | Remotely program function |
| NOVOFERM | NOVOTRON 502-504-512MIX43-2,MTR40-2,MCHS43-2,MHS 43(2-4),MSHS433(2-4) | Need to activate the receiver |
| NOVOTECNICA | BIXL2 | Need to activate the receiver |
| NOVA | | Need to activate the receiver |
| O&O | TWIN,TX2/TX4(NEO), T.COM R4-2/TCOM R4-4.T.COM R8-2/T.COM R8-4 | Remotely program function |
| Peccinin | TX MENBRANA | Need to activate the receiver |
| PRASTEL | MPSTF2/F4RE, MPSTL-1E/2E/4E, MPSTP2E/2E BLUE, MT4E/2E, BFOR, TRQ4P, TC2E, TRQ2P | Remotely program function |
| PROEM | ER2C4ACS/ER4C4ACS | Need to activate the receiver |
| PUJOL | VARIO, MARTE | Need to activate the receiver |
| PROTECO | | Note! Fixed Code Match Receiver directly |
| RIB | LITHIO | Note! Fixed Code Match Receiver directly |
| Rossi | | Need to activate the receiver |
| SEA | HEAD,SMART DUAL ROLL,SMART-3 ROLLING CODE,COCCINELLA ROLL | Need to activate the receiver |
| SEAV | BE-HAPPY-RS1, BE-HAPPY-RS2, BE-HAPPY RS3, BE-SMART RSX, BE-HAPPY RH1, BE-HAPPY RH2, BE-HAPPY RH3 | Need to activate the receiver |
| SLAVE | | Need to activate the receiver |
| SIMINOR | S433-4T/S433.4T SIMINOR 433-NLT2/433-NLT4 | Need to activate the receiver |
| SUPERLIFT | | Need to activate the receiver |
| SOMFY | TELIS 1/ 4 RTS | Need to activate the receiver |
| SOMFY | KEYTIS 2/ 4 NS,KEYGO 4 RTS,SOMFY 433-NLT4 BEIGE, SOMFY 433-NLT2 RTR, SOMFY TX2 433MHZ | Need to activate the receiver |
| SOMMER | 4014 TX03-434-2, 4013 TX02-434-4, 4022 TX03-434-2, 4026 TX03-868-2, 4020 TX03-868-4, 4025-TX02868.4011, 4010 | Need to activate the receiver |
| STAGNOLI | AV223 | Need to activate the receiver |
| TAU | 250 SLIM RP,250 T4 RP | Remotely program function |
| TELCOMA | FM402,FM402 E | Need to activate the receiver |
| VDS | TRQ,ECO-R | Remotely program function |
| V2 | PHOENIX 433-868,TXC,TSC,TRC,HANDY | Remotely program function |