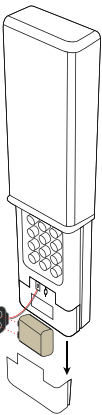


Manual For Universal Garage Door  
Wireless Keypad JP-LT



Features

The keypad provides visibility in any light to allow entry via a personal 4–digit code.Set up in seconds with easy–to–follow wireless programming and universal frequency recognition of over 90% of all garage door openers installed in North America, including major brands such as Chamberlain®, LiftMaster®,Craftsman®, Genie® and more. A perfect fit for active lifestyles, this keypad is a great complement to a traditional visor and/or compact personal remote. Includes 9V battery and instruction manual.



Operation instructions

– Opener activits 4–digit password and “#”enter button is pressed.If wrong numbers are accidentally pressed,correction can be made immediately .The “#” Enter button will transit only the last four digits. In case you are accompanied by the person who might see the pin code while you key it in, you can scramble your pin code while you key it in. To prevent the visitors from seeing your pin code.

– The keypad will exit the programming mode if the keypad did not receive any commands within 6s.

– Factory default set Wireless Keypad with beep alarm and keypad back indicator light. Press”36#”to set the beep alarm as if desired.

– When programming, if user key in users’ pin code more than 4 digits, the keypad would recognize it as incorrect operation, then exit programming mode.

– Keypad allows three attempts of wrong entire pin codes. After the third wrong entire pin codes key–in, the keypad will be locked for 2 minutes with 3 beeps and red LED light goes on. 2 minutes later, keypad would have one beep sounds and red.LED indicator goes off to indicate the user keypad is unlock.

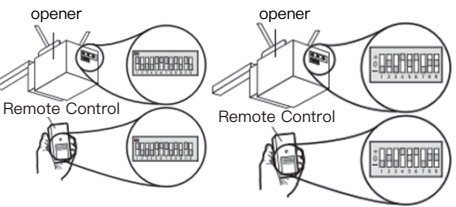
– Please take the battery out When programing if you got something wrong/mistake, you will find a RESET button on the PCB.With a long beep sound after you pressing RESET button for 5s,the systems will be resettled successfully.

Programming--Determine  
garage door opener types  
and set correct brand

Proceed with instructions for programming according to your garage door opener type;

(\*\*\*Your motor unit and/or remote control may look different.)

**TYPE 1:** Chamberlin,Sears Craftsman,Liftmaster, Mechanic and Do It,Genie,Linear,Moore–o–Matic garage door openers and receivers with: **DIP switches.**



Step 1

Select and write 4–digit pin. Factory PIN set **0000 \***

Step 2

Determine your opener ID using the list as Chart 2, For this example,CHAMBERLIN 8 position ID is **14**.

Step 3

The first dip switch must be set to the “–” position on your remote and opener .Record your dip switch sequence for remaining DIP switches. If the DIP switches in the “+” position place a 2 , “–” position place a 8 (Take reference of Chart 1).

\*\*\*For Chamberlain,Master Mechanic and Do It garage opener/Remote.Radio receiver,the first DIP switch must be set to the”–”position.If opener does not function,flip DIP switches,so if a dip switch is “on” or “up” flip it “off” or “down”.

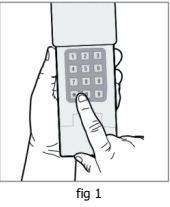


fig 1

\*\*\*Each switch of the KEYPAD only have 2 positions,if your existing Garage opener/Radio Receiver has 3 positions,you can set them in”+’ or ”–”first,do not use ”0”position.Then match with the keypad.

DIP Switch Sequence	1	2	3	4	5	6	7	8	9	10	11	12
+ 2												
– 8												

Chart.1

Step 4

Enter pin from step 1 ,press **\***

Step 5

Enter **59** with the end of **#** keypad will give one long beep to confirm.

Step 6

Enter CHANNEL(01 OR 02) , Press **#**

Step 7

Enter ID from Step 2,press **#**

Step 8

Enter DIP switch sequence from step 2 and press **#** key, keypad will give one long beep. The new installer gate opener code has been programmed to the keypad.

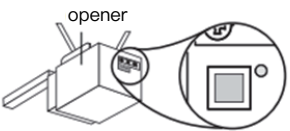
Step 9

Test and use.Entering the channel’s pin code that you have set to activate the Gate Opener.

Factory default pin code for 1st channel: **1111**, press**#**

Factory default pin code for 2nd channel: **2222**,press**#**

**TYPE 2:** Chamberlain,Sears craftsman,Liftmaster, Mechanic and Do It,Genie Intellicode,Overhead Door ,Stanely,Wayne Dalton Linear garage door openers and receivers with:**Program/Set button /Smart/Learn button.**



Step 1

Select and write 4–digit pin. Factory default PIN set is **0000 \***

Step 2

Determine your opener ID using the list as Chart 2.For this example,CHAMBERLIN Green Button 1993–1996,the ID is **04**.

Step 3

Enter pin from step 1 ,press **\***

Step 4

Enter **59** with the end of **#** keypad will give one long beep to confirm.

Step 5

Enter CHANNEL(01 OR 02) ,Press **#**

Step 6

Enter ID from Step 2,press **#**

Step 7

Press and release the Smart Button on garage door opener.

Step 8

Entering the channel’s pin code that you have set to activate the Gate Opener.

Factory default pin code for 1st channel: **1111**, press**#**

Factory default pin code for 2nd channel: **2222**, press**#**

Step 9

Test and use.  
\*\*\* If opener doesn’t function, repeat programming.

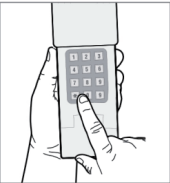


fig 3

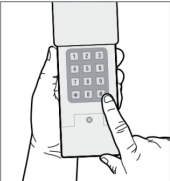


fig 4

Brand Table

#of times to press button	Brand	Type/Color of Smart/Learn
01	Linear	Mega code ‘97–Current
02	Chamberlain	Orange Button ‘97–05
03	Chamberlain	Purple Button ‘05–Current
04	Chamberlain	Green Button ‘93–96
05	Genie Overhead door	Intellicode ‘95–Current
06	Genie Overhead door	Intellicode ‘05–Current
07	Stanley	Security Code ‘97–Current
08	Chamberlain	Yellow button 2011–current
09	Wayne Dalton	Rolling code 1999–Current
10	Chamberlain	9 Position 1990–1992
11	Chamberlain	9 Position 1983–1989
12	Genie	12 Position 1985
13	Linear Multi code	10 Position
14	Chamberlain	8 Position
15	Stanley / Multi code	10 Position
16	Genie	9 Position
17	Linear Moore–O–Matic	8 Position
18	Chamberlain	7 Position

Chart 2

Change your Installer’s PIN code

For security reasons, you can change the installer’s pin code to be one of your own, so no one else but you can only change and program the keypad in the future.

For this example, we are going to use **3333**.

Step 1

Enter **0000 \*** keypad will have long beep to confirm.

Step 2

Enter **69#** keypad will give one short beep to confirm.

Step 3

Enter new installer code **3333#** keypad will give one long beep and one short beep. The new installer code has been programmed to the keypad.

Change new 4-digit PIN code of  
each channel

Keypad has 2 channels, each channel can control different garage door independently.You can choose and program each channel to a different pin code as follows:

For this example, we are going to use **1919**.

Step 1

Enter factory set entry’s key code **1111\*.**

Step 2

Key **01# or 02#** keypad will beep once.

Step 3

Enter new customers pin **1919#** one long beep and one short beep will confirm customer’s new pin.

\*\*\* Installers’s PIN code can not be settled the same as each Channel’s PIN code.

Installation

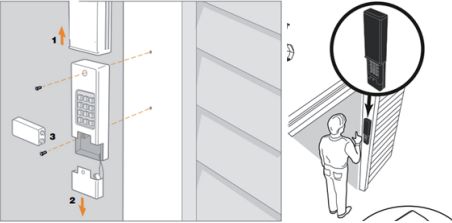
1.Select a location to mount the Keypad at a minimum height of 5 feet (1.5m) out of the reach of Children.

2.Remove battery cover and battery.

3.Mark the top mounting hole and drill 1/8 inch (3.2mm) pilot hole.

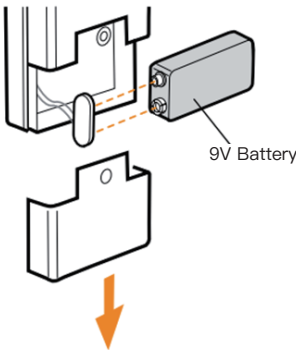
4.Install the top screw, allowing 1/8inch (3.2mm) to protrude above the surface, position the keypad over the top screw.

5.Re–install battery and replace cover.



Battery

Replace the 9v battery when keypad light becomes dim or does not light up,remove battery cover ,and replace battery .Re–programming maybe necessary.



RFQS

Why won’t my keypad work?

– Did the keypad lights come on when you entered your PIN ? If the keypad lights do not turn on when you press a button, it indicates that the battery needs to be replaced. Replace with a 9V battery.

– Make sure the keypad is compatible with your garage door opener.(Chamberlain 315 MHz or 390 MHz garage door openers manufactured after January 1, 1993.)

– If the solutions above did not work, replace the keypad.

Will I have to reprogram the keypad after changing the battery?

The keypad should retain its memory.If the keypad no longer operates the operator.Reprogram the keypad to your system.

Where is my learn button on my gate?

Most gate openers have a built–in radio receiver of an external receiver.The receiver on a gate opener can usually be found within cabinet of the operator. To gain access you might require permission if used in a community gate.

Can I program the keypad to a second garage door opener?

The keypad can activate TWO garage door openers at the same time.

Warranty

One year limited warranty.