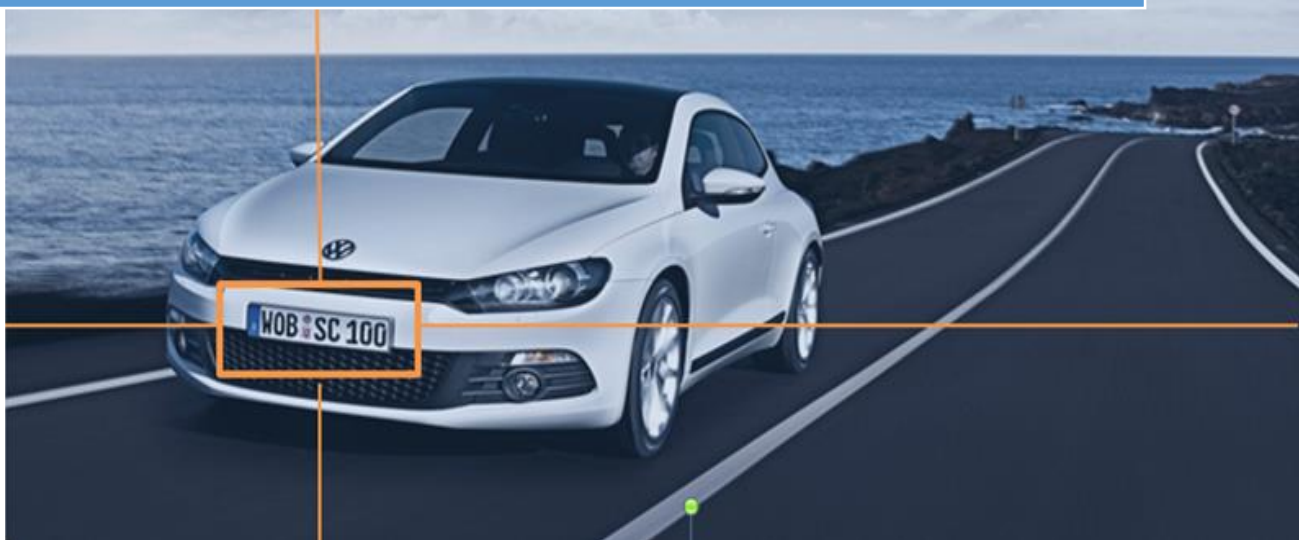


ANPR Parking Management System User Manual



TGW

TigerWong

2022-04

User Manual

COPYRIGHT © 2001 Shenzhen Tigerwong Technology Co.,Ltd

ALL RIGHTS RESERVED.

Any and all information, including, among others, wordings, pictures, graphs are the properties of

Shenzhen TigerWong Technology Co.,Ltd or its subsidiaries (hereinafter referred to be "TigerWong"). This user manual (hereinafter referred to be "the Manual") cannot be reproduced,

changed, translated, or distributed, partially or wholly, by any means, without the prior written

permission of TigerWong. Unless otherwise stipulated, TigerWong does not make any warranties,

guarantees or representations, express or implied, regarding to the Manual.

About this Manual

This Manual is applicable to Parking Management System (PMS).

The Manual includes instructions for using and managing the product. Pictures, charts, images and

all other information hereinafter are for description and explanation only. The information

contained in the Manual is subject to change, without notice, due to firmware updates or other

reasons. Please find the latest version in the company website

(<http://www.sztigerwong.com>).

Please use this user manual under the guidance of professionals.

Trademarks Acknowledgement

and other TigerWong's trademarks and logos are the properties of TigerWong in various jurisdictions. Other trademarks and logos mentioned below are the properties of their respective owners.

Legal Disclaimer

TO THE MAXIMUM EXTENT PERMITTED BY APPLICABLE LAW, THE PRODUCT DESCRIBED, WITH ITS

HARDWARE, SOFTWARE AND FIRMWARE, IS PROVIDED "AS IS", WITH ALL FAULTS AND ERRORS,

AND TIGERWONG MAKES NO WARRANTIES, EXPRESS OR IMPLIED, INCLUDING WITHOUT LIMITATION,

MERCHANTABILITY, SATISFACTORY QUALITY, FITNESS FOR A PARTICULAR PURPOSE, AND

NON-INFRINGEMENT OF THIRD PARTY. IN NO EVENT WILL TIGERWONG, ITS DIRECTORS, OFFICERS,

EMPLOYEES, OR AGENTS BE LIABLE TO YOU FOR ANY SPECIAL, CONSEQUENTIAL, INCIDENTAL, OR

INDIRECT DAMAGES, INCLUDING, AMONG OTHERS, DAMAGES FOR LOSS OF BUSINESS PROFITS,

BUSINESS INTERRUPTION, OR LOSS OF DATA OR DOCUMENTATION, IN CONNECTION WITH THE USE OF THIS PRODUCT, EVEN IF TIGERWONG HAS BEEN ADVISED OF THE POSSIBILITY OF SUCH DAMAGES.

REGARDING TO THE PRODUCT WITH INTERNET ACCESS, THE USE OF PRODUCT SHALL BE WHOLLY AT YOUR OWN RISKS. TIGERWONG SHALL NOT TAKE ANY RESPONSIBILITIES FOR ABNORMAL OPERATION, PRIVACY LEAKAGE OR OTHER DAMAGES RESULTING FROM CYBER ATTACK, HACKER ATTACK, VIRUS INSPECTION, OR OTHER INTERNET SECURITY RISKS; HOWEVER, TIGERWONG WILL PROVIDE TIMELY TECHNICAL SUPPORT IF REQUIRED.

SURVEILLANCE LAWS VARY BY JURISDICTION. PLEASE CHECK ALL RELEVANT LAWS IN YOUR JURISDICTION BEFORE USING THIS PRODUCT IN ORDER TO ENSURE THAT YOUR USE CONFORMS THE APPLICABLE LAW. TIGERWONG SHALL NOT BE LIABLE IN THE EVENT THAT THIS PRODUCT IS USED WITH ILLEGITIMATE PURPOSES.

IN THE EVENT OF ANY CONFLICTS BETWEEN THIS MANUAL AND THE APPLICABLE LAW, THE LATER PREVAILS.

A large, stylized, light blue and white logo of the letters 'TGW' is centered on the page. Below it, the letters 'TGW' are written in a large, bold, orange font.

Table of Contents

Chapter 1 Brief introduction.....	5
1. Overview.....	5
2. User Login.....	5
Chapter 2 System Configuration.....	7
3. Maintenance	7
3.2 Change password.....	8
3.3 Setting parameters.....	8
3.6 System maintenance	13
3.7 Payment scheme	14
Chapter 3 Role Management	14
4. Authorization	14
4.1 Authorization	15
4.3 Operator profile.....	17
4.4 Parking profile	18
Chapter 4 Vehicle Management.....	19
5. Vehicle.....	19
5.1 Registration	19
5.2 Renewal	20
5.3 Recharge	21
6. Surveillance.....	22
Chapter 5 Record and Report	28
7. Record.....	28
7.1 Admission vehicle record.....	28
7.2 Exit vehicle record	29
7.3 Operator shift record	30
8. Report.....	30
8.3 Operator charge report.....	32
8.4 Parking fee report	33
8.5 Entrance traffic report.....	34

8.6 Exit traffic report	34
9. About.....	35

Chapter 1 Brief introduction

1. Overview

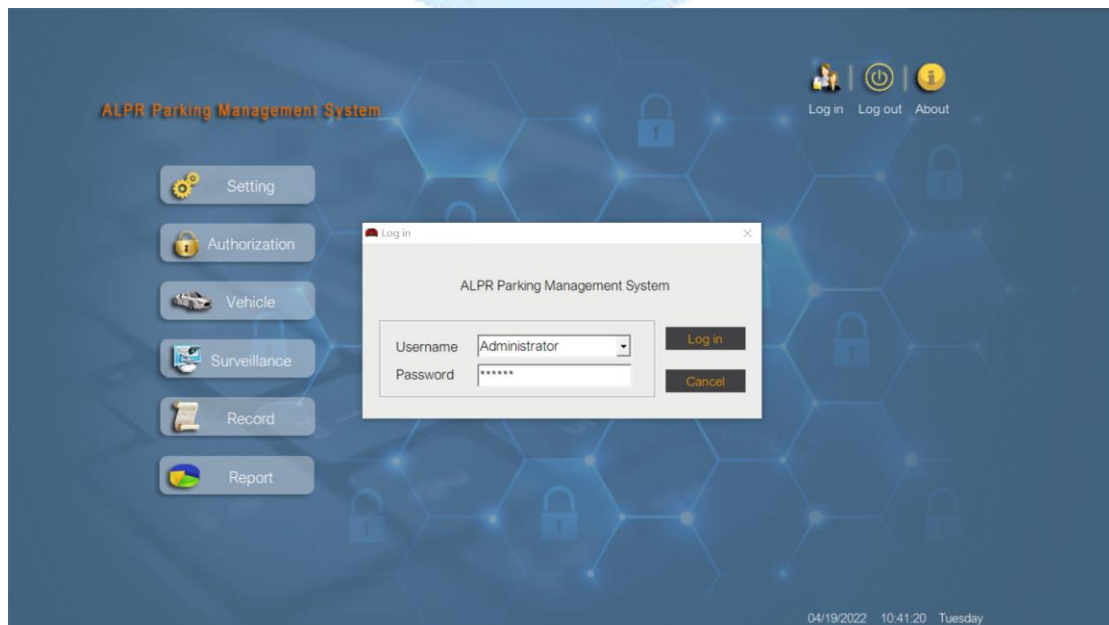
Parking Management System(PMS) is a software specially designed by TigerWong for manage the entry and exit of parking and parking fee information.It widely used any kinds of parking which need manage the vehicles.The system specially customized for License Plate Recognition System.

2. User Login

2.1 Double click  to enter the software and you will see the login interface.

Default account: Administrator

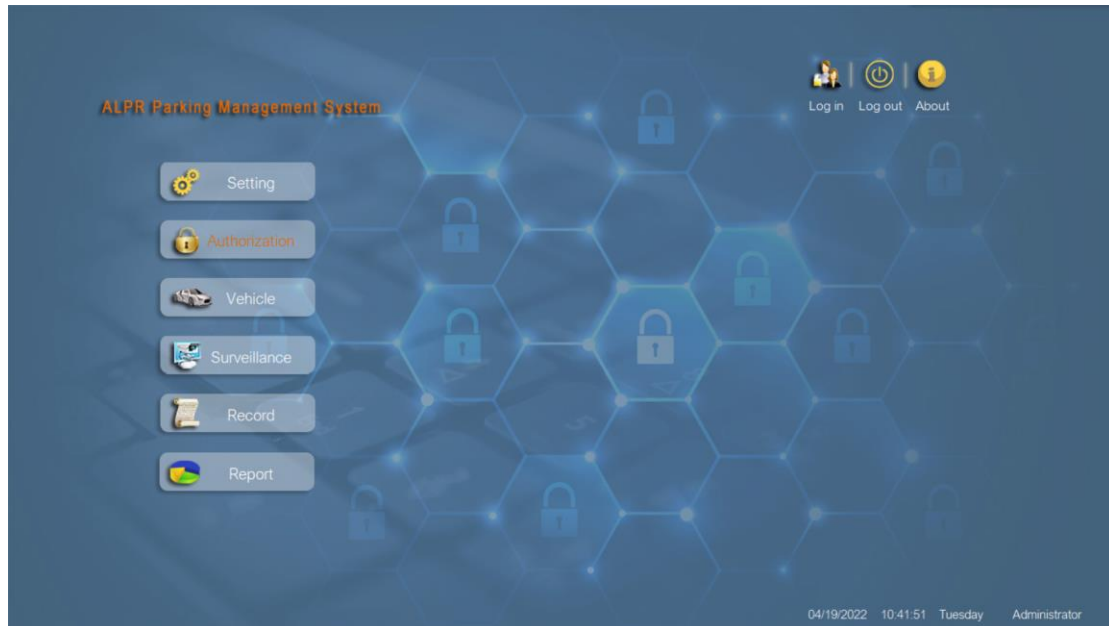
Default password: 666666.



(2.1 Login Interface)

2.2 Here we can see that the software is mainly composed of six parts, namely "log

in"; "Maintenance" ; "Authorization" ; "Vehicle" ; "Surveillance" ; "Record" ; "Report" ; "About". This manual will explain one by one.

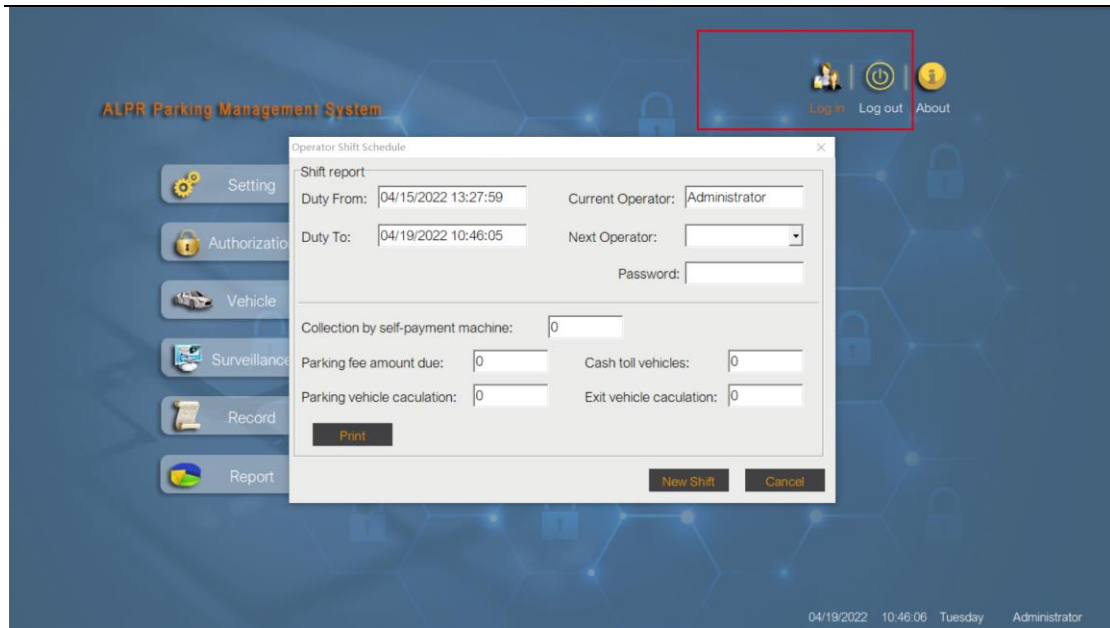


(2.2 Main Interface)

2.3 Login and Logout

First of all, when we click "log in", two secondary options will be displayed at the bottom, namely "log in" and "log out". In the secondary option of "log in", this function is mainly set for the cashier's shift handover. Log in to the corresponding cashier's account code to carry out shift handover. The system will also keep the shift handover time, person's name and the collection amount of automatic payment machine / cash, In addition, there is traffic flow information at the entrance and exit. Of course, we also support printing forms.

When you click "log out", you will be asked whether you want to exit the system.

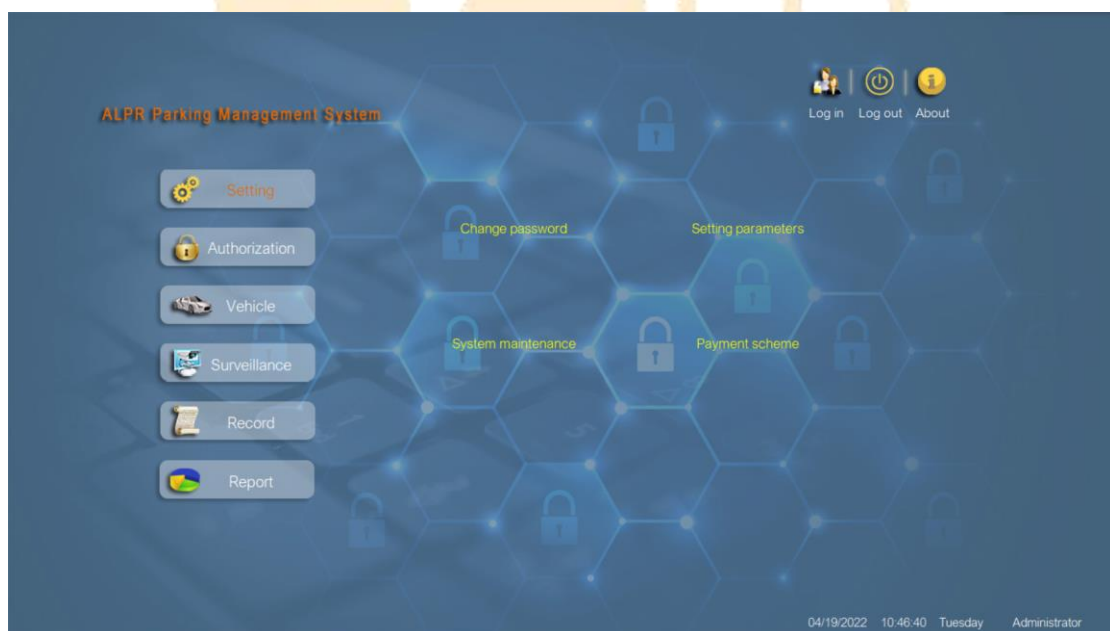


(2.3 "log in interface")

Chapter 2 System Configuration

3. Maintenance

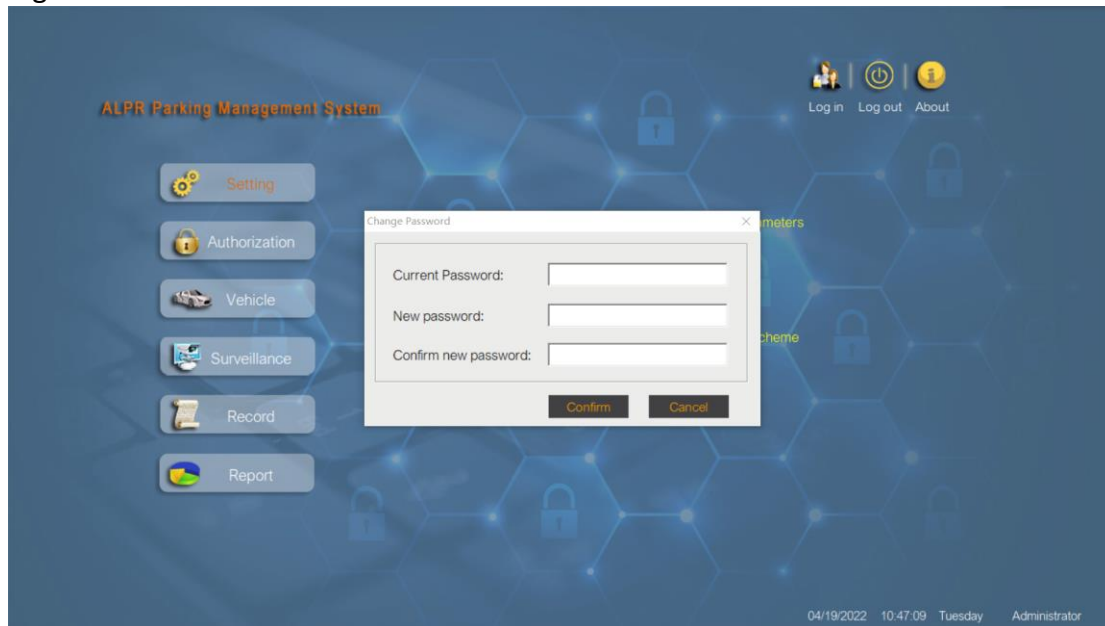
3.1 Then you can see the "**maintenance**" option, which is mainly for many software settings. It is divided into four sub options, namely "**change password**", "**setting parameters**", "**system Miantenance**" and "**payment scheme**".



(3.1 Maintenance Surface)

3.2 Change password

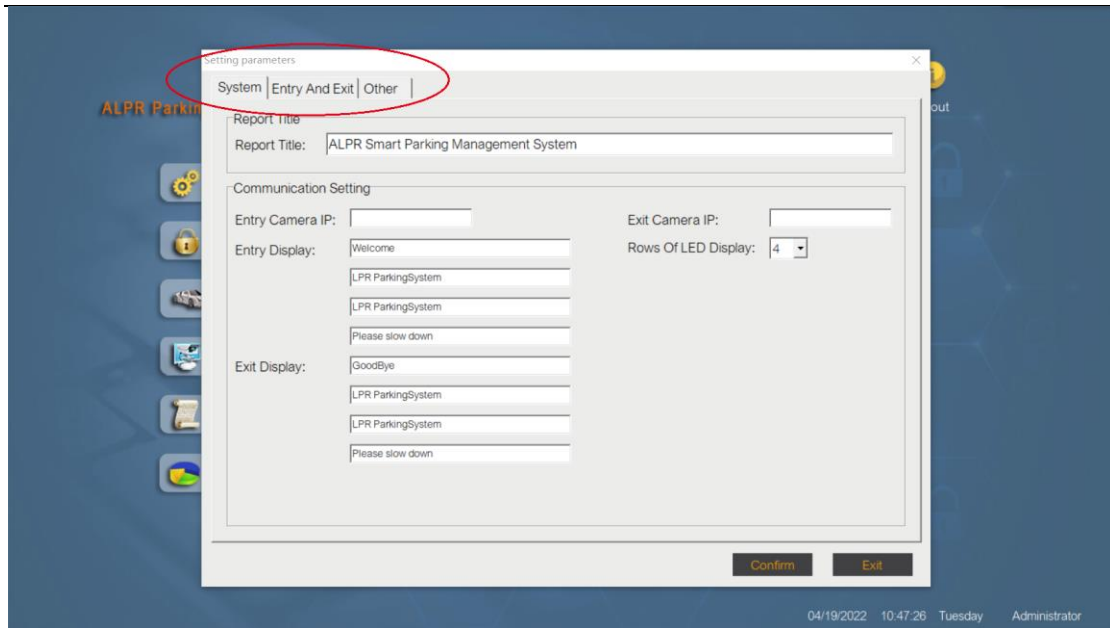
"Change password" is to let the administrator change the account password of the login software



(3.2 Change Password interface)

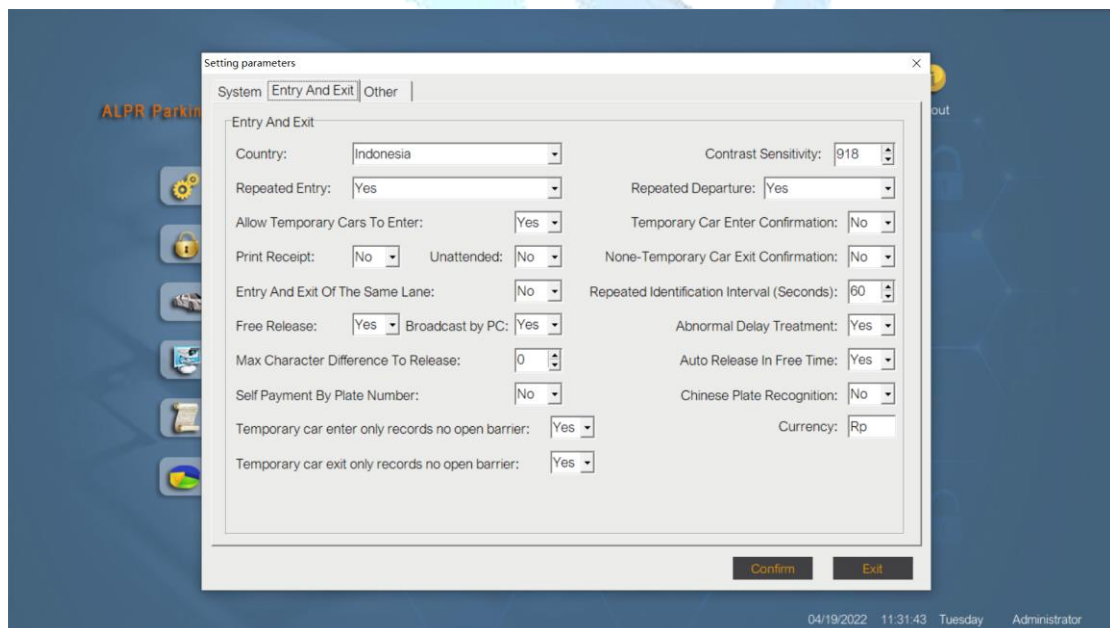
3.3 Setting parameters

The "setting parameters" option contains three subordinate menus, namely "system", "entry and exit" and "other". First, the first "system" is the basic software setting, including "report title", which is used to set the header of the report; And the name of the entrance and exit below, the IP address of the entrance and exit motherboard and camera (which is very important for the hardware connection software), as well as the "Entry Display & Exit display", as well as the display content of the entrance and exit display screen. These settings can be changed according to the actual situation. PS: displays documents in multiple languages.



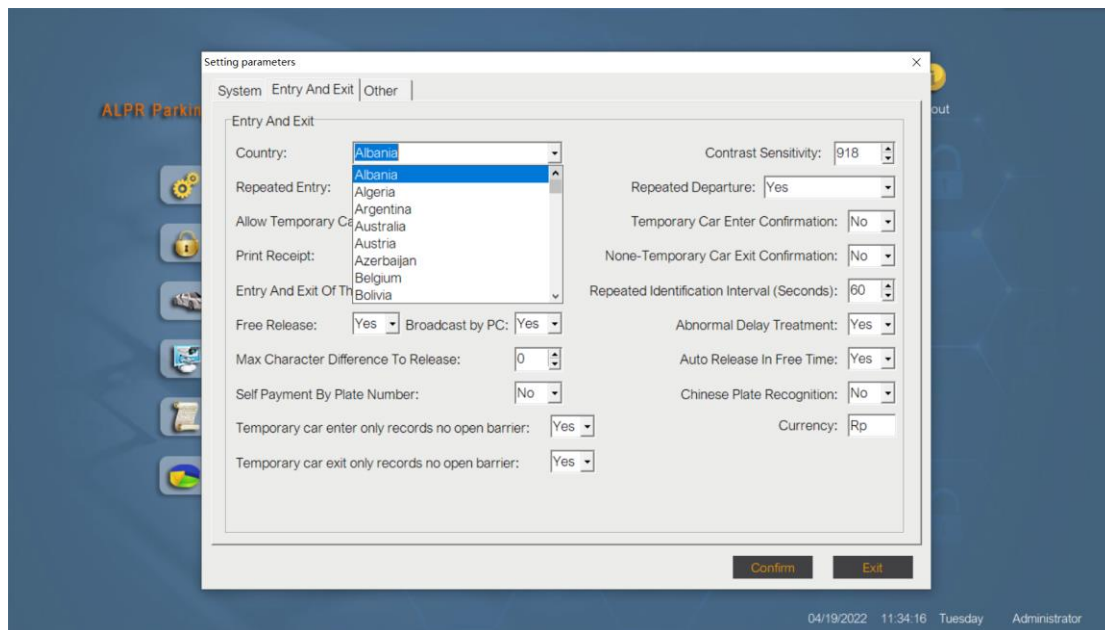
(3.3 Setting Parameters interface)

3.4 In the second option "entry and exit", all options are drop-down options, which are for the setting of entry and exit permissions and rules.



(3.4 Entry and Exit interface)

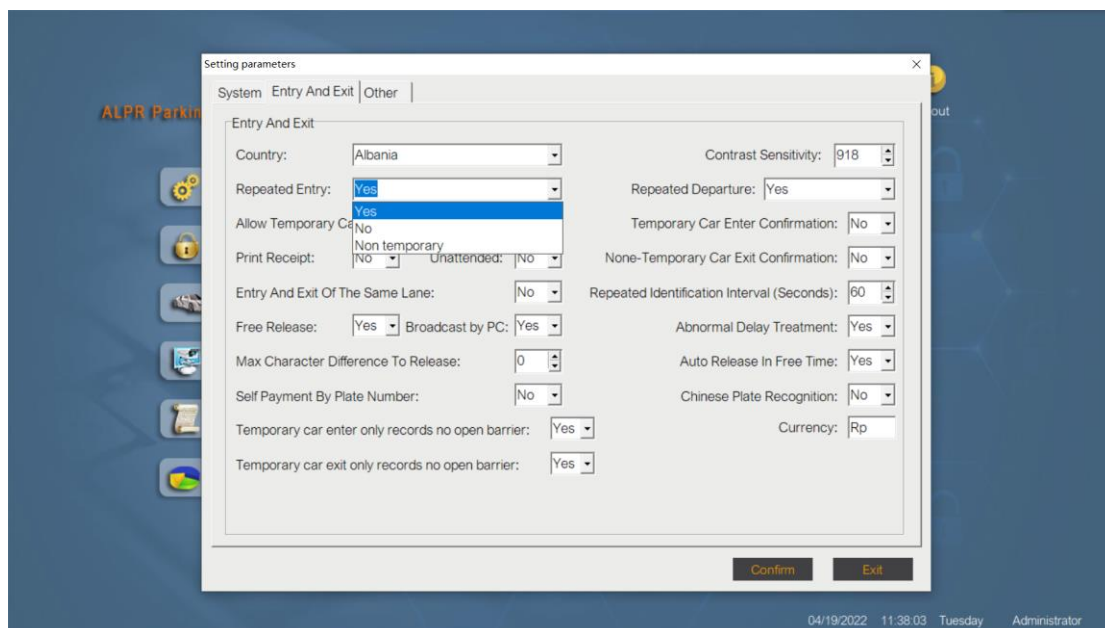
“Country”In the options, you need to select the country you are mainly using for license plate recognition.



(3.4.1 Country interface)

“Contrast Sensitivity”This option is the sensitivity of license plate recognition, the default value is 918, please do not change this value arbitrarily

"Repeated entry" refers to the situation where a vehicle has an entry record but has been out but has no entry record. If it is not allowed, the vehicle will need to have a complete entry and exit record before entering the parking lot again. Of course, this option also has the "non temporary" option, which means that vehicles other than temporary vehicles can enter repeatedly.



(3.4.2 Repeated Entry interface)

"Repeated Departure" is similar to "repeated entry", which means whether to allow repeated appearances. There is also the option of "non temporary"

"Allow Temporary cars to enter" Means this car park is only for VIP and other types of non-temporary vehicles

"Temporary cars enter Confirmation" is based on "Yes" for "Allow Temporary cars to enter", and there will be confirmation when temporary cars drives in.

"Unattended" means the entire process from entering the venue, finding a parking space, paying the parking fee to the final departure can be completed by the vehicle without manual participation, which greatly improves the traffic efficiency and allows the majority of users to enjoy an unprecedented parking experience.

"Non temporary card exit confirmation" refers to the exit confirmation of VIP vehicles, monthly cards and stored value vehicles.

"Entry and exit of the same lane" applies when only one channel is used for both entry and exit lanes.

"Repeated identification interval" refers to the interval of repeated identification, corresponding to the allowed repeated admission. The default time is 60 seconds, which can be adjusted according to the actual situation.

"Free release" will correspond to the "free" button in the "surveillance" section (yes corresponds to the optional state and no corresponds to the non optional state), which is free for special vehicles / situations / abnormalities.

"Broadcast by PC" means the entry/exit information will broadcast from PC speaker for the cashier

"Abnormal delay treatment" will also correspond to the "Cancel" button in the later "surveillance" section ("yes" corresponds to the optional state and "no" corresponds to the non optional state). For the behavior of giving up this appearance, the cashier can cancel this appearance record and continue to charge parking fees.

"Max Character Difference To Release" means the maximum number of bad characters that will be allowed to be recognized

"Auto release in free time" is associated with the charging standard and allows vehicles to enter and leave freely during the free time period. If "no" is selected, it

should also be confirmed during the free time period

"Self payment By Plate Number" It means that you can pay at the self-service payment machine/central payment office as long as you enter the license plate number

"Chinese Plate Recognition" This does not refer to identifying Chinese license plates, but for which border areas there are scenarios where license plates from multiple countries exist, so it is necessary to identify license plates from other countries, which can be customized here.

"Currency" to enter the country corresponding currency abbreviation.

"Temporary car enter only records no open barrier" & "Temporary car exit only records no open barrier" It means that when a temporary car enters/exits, the entry/exit will be recorded, but the gate will not be opened, but the cashier needs to use the remote control to open the gate

3.5 Next is the "other" submenu, which is mainly for the relevant settings of **parking lot information and data storage**. The time of storing photo data and whether to delete data beyond the retention period can be set according to the computer memory.

In addition, **the number of parking spaces** shall be set according to the situation of the parking lot.

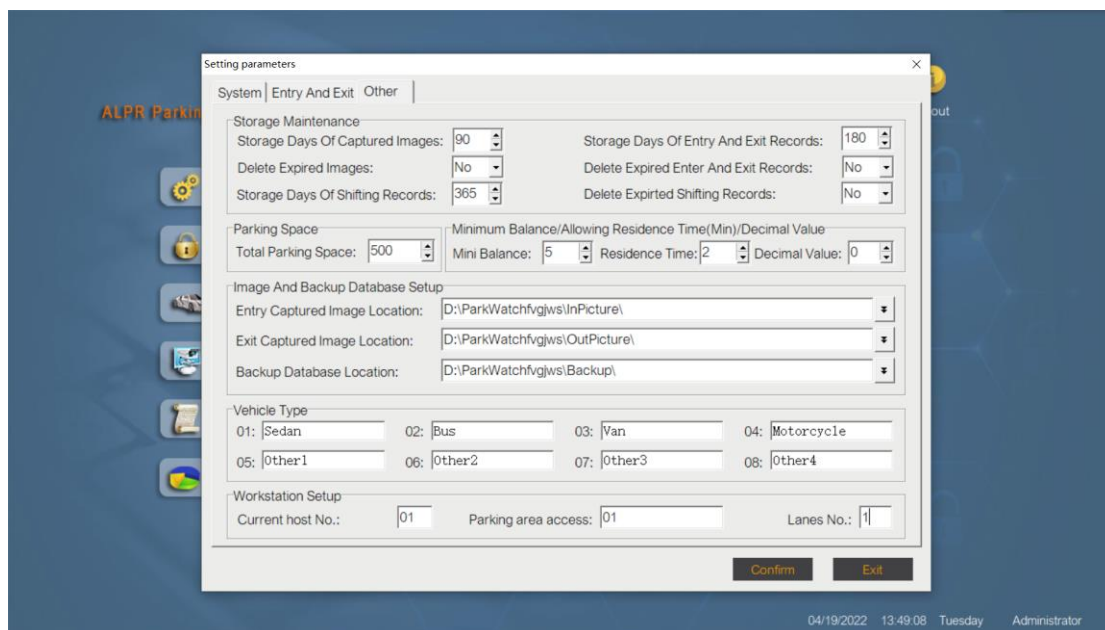
"Minimum balance / allowing residence time / decimal value": "minimum balance" refers to the minimum amount of cash vehicles allowed. If the balance of cash vehicles is less than the set number, they cannot enter.

"Allowing residence time" refers to the time allowed to stay in the parking lot after paying the fee under the condition of central payment. If it exceeds this time, it needs to pay again.

"Decimal value" refers to the number of digits after the decimal point reserved for the parking fee amount.

In addition, it can also set the storage address of import and export / backup data and the setting of vehicle type. At present, our software supports the setting of up to 8 models. This setting will have different charging standards for different models.

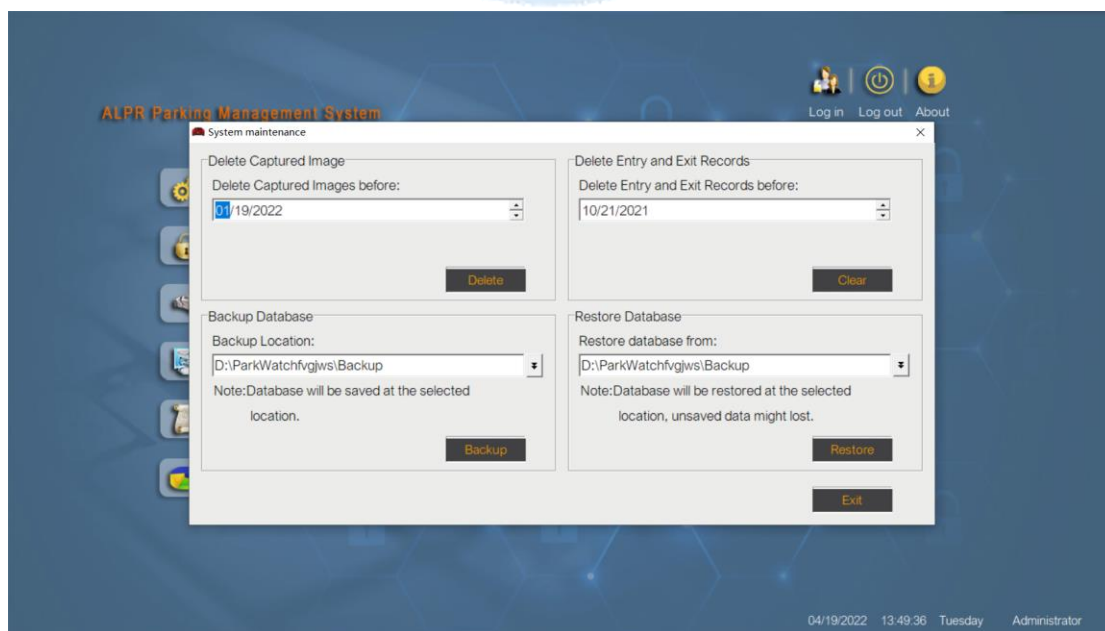
"Workstation No." and "parking lot" are applicable to the situation that multiple entrances and exits / floors and multiple software are jointly managed. They are numbered for distinguishing.



(3.5 "Other" Interface)

3.6 System maintenance

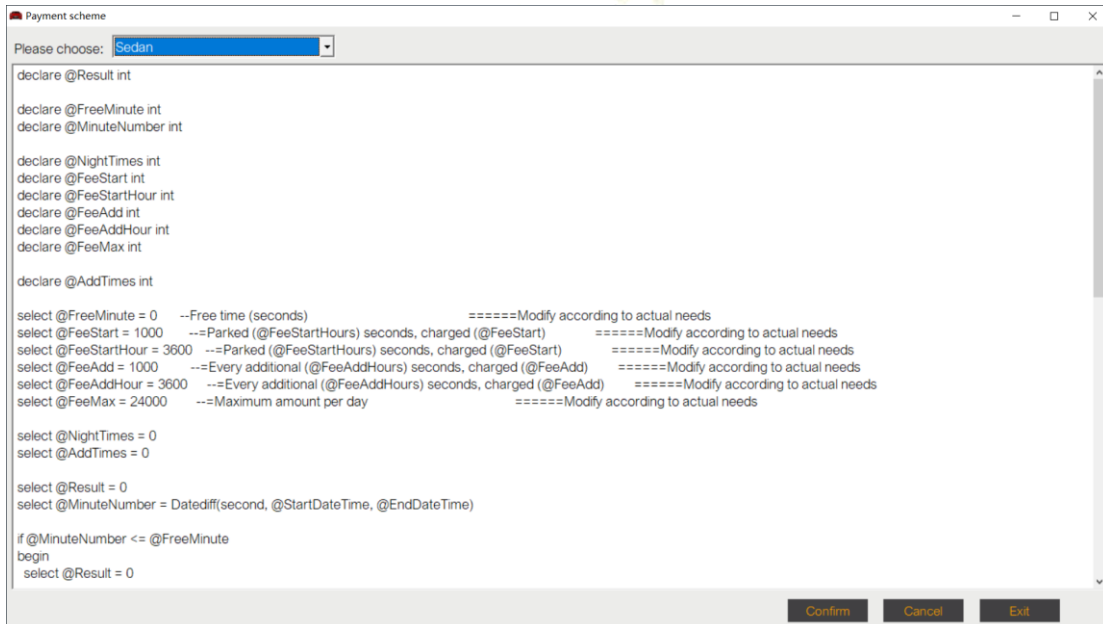
Next is the third submenu, namely "**system maintenance**". This setting menu is for the situation that data needs to be **backed up / deleted manually**. You can also select the time and address to be backed up / deleted.



(3.6 "System Maintenance" interface)

3.7 Payment scheme

Finally, there is the secondary menu of **"payment scheme"**. The drop-down options can support the basic **charging rules of 8 models**. This is the core of parking lot charging. All charging details will be set here. Do not change this setting by yourself. **If you need to change and add charging details, please contact our Engineer for change.**



Payment scheme

Please choose: Sedan

```

declare @Result int

declare @FreeMinute int
declare @MinuteNumber int

declare @NightTimes int
declare @FeeStart int
declare @FeeStartHour int
declare @FeeAdd int
declare @FeeAddHour int
declare @FeeMax int

declare @AddTimes int

select @FreeMinute = 0 --Free time (seconds) =====Modify according to actual needs
select @FeeStart = 1000 --Parked (@FeeStartHours) seconds, charged (@FeeStart) =====Modify according to actual needs
select @FeeStartHour = 3600 --Parked (@FeeStartHours) seconds, charged (@FeeStart) =====Modify according to actual needs
select @FeeAdd = 1000 --Every additional (@FeeAddHours) seconds, charged (@FeeAdd) =====Modify according to actual needs
select @FeeAddHour = 3600 --Every additional (@FeeAddHours) seconds, charged (@FeeAdd) =====Modify according to actual needs
select @FeeMax = 24000 --Maximum amount per day =====Modify according to actual needs

select @NightTimes = 0
select @AddTimes = 0

select @Result = 0
select @MinuteNumber = Datediff(second, @StartDateTime, @EndDateTime)

if @MinuteNumber <= @FreeMinute
begin
select @Result = 0
    
```

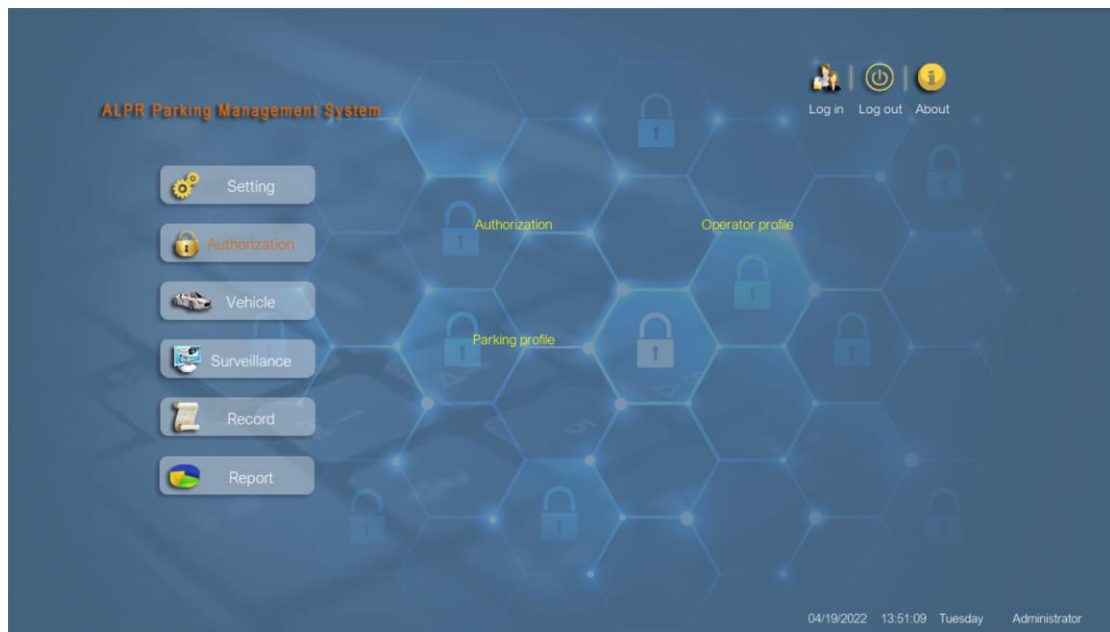
Confirm Cancel Exit

(3.7 "Payment scheme" interface)

Chapter 3 Role Management

4. Authorization

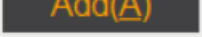
Next is the **"authorization"** menu. You can see that it is divided into three submenus. This setting is for **the permissions of each cashier and administrator**. Managers at different levels will be allowed to operate different settings, and the files of the same Manager / parking lot will also be recorded in it for easy viewing.



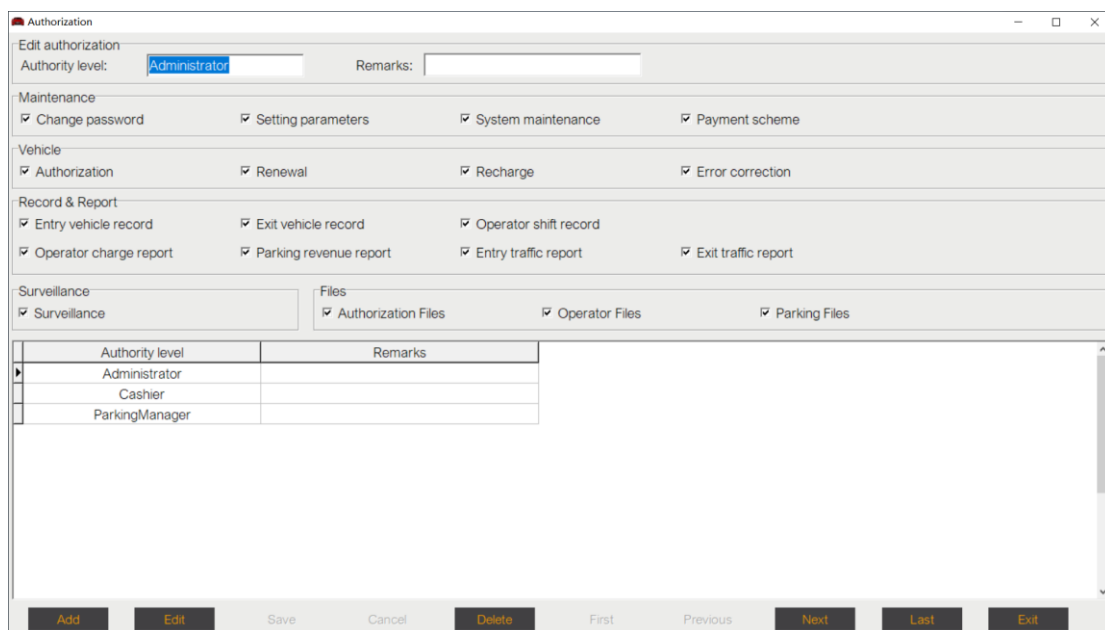
(4 Authorization interface)

4.1 Authorization

In the first sub menu "**authorization**", we can first understand all permission options, which involves which permissions each management level will have. If there is no permission, all members of the management level will not be allowed to operate.

If we want to **add a new management level**, we need to click , Then the whole page will become editable. Similarly, when you want to modify the management level, first select the management level to be modified, and then

click 



The screenshot shows the 'Authorization' window with the following sections:

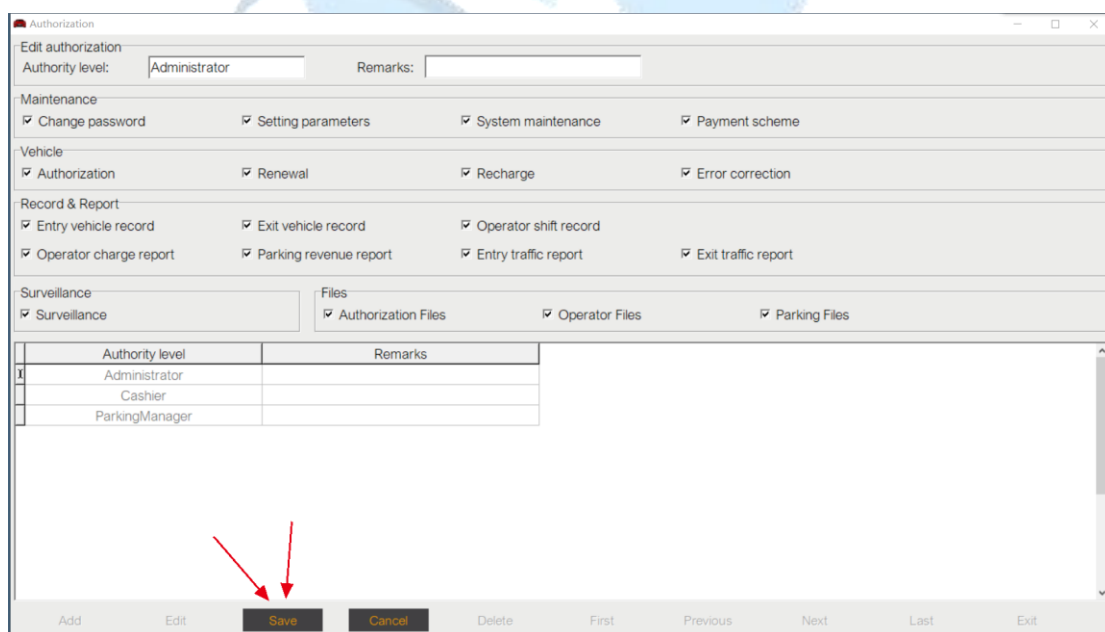
- Edit authorization:** Authority level: Remarks:
- Maintenance:** ☒ Change password, ☒ Setting parameters, ☒ System maintenance, ☒ Payment scheme
- Vehicle:** ☒ Authorization, ☒ Renewal, ☒ Recharge, ☒ Error correction
- Record & Report:** ☒ Entry vehicle record, ☒ Exit vehicle record, ☒ Operator shift record, ☒ Operator charge report, ☒ Parking revenue report, ☒ Entry traffic report, ☒ Exit traffic report
- Surveillance:** ☒ Surveillance
- Files:** ☒ Authorization Files, ☒ Operator Files, ☒ Parking Files

Authority level	Remarks
Administrator	
Cashier	
ParkingManager	

Buttons at the bottom: Add, Edit, Save, Cancel, Delete, First, Previous, Next, Last, Exit.

(4.1 "Authorization" interface)

4.2 Then we set the permissions of each "authority level" according to the specific situation, and then click "save" to save.



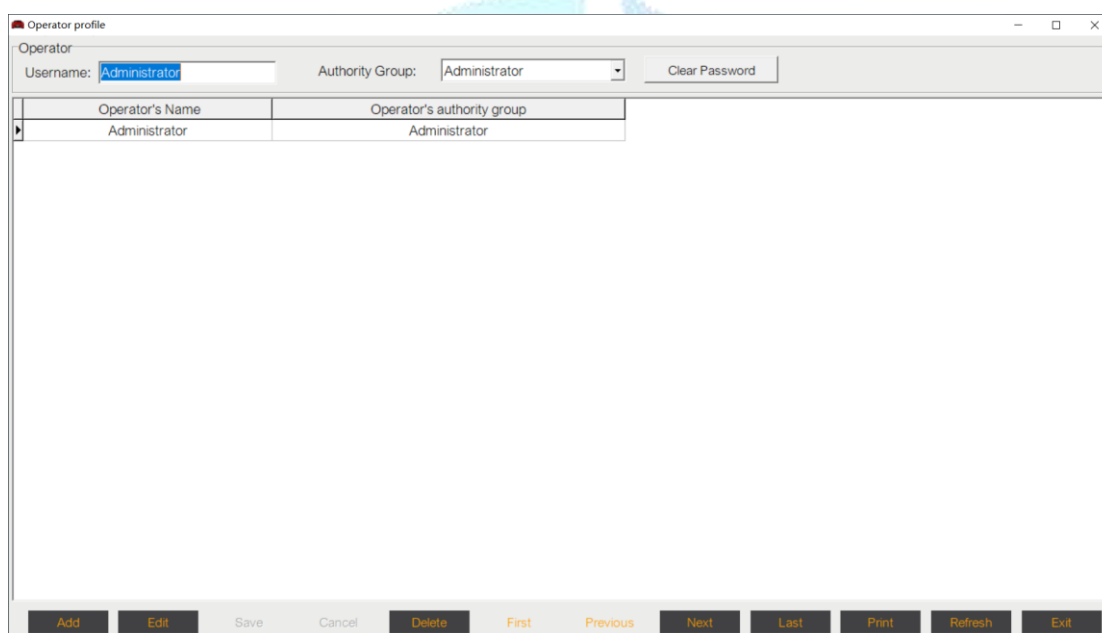
This screenshot is identical to the previous one, but with two red arrows pointing to the 'Save' button in the bottom navigation bar.

(4.2 "Authorization" level)

4.3 Operator profile

Next is the sub menu of **"operator profile"**. This menu is for the specific information of the administrators of each level in "authority level". It is necessary to enter all the staff of the parking lot according to different levels, and then combine the authority

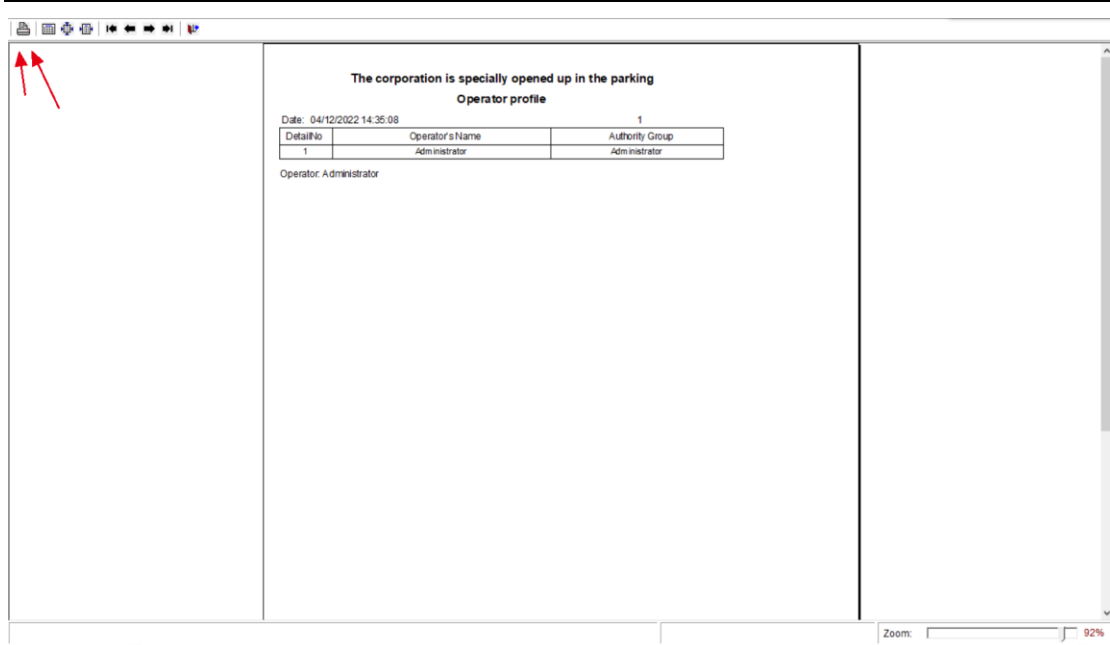
management of each level set before. Same Click **Add(A)**, for add a new one.and click **Edit(E)** for saving.



Operator's Name	Operator's authority group
Administrator	Administrator

(4.3 "Operator profile" Interface)

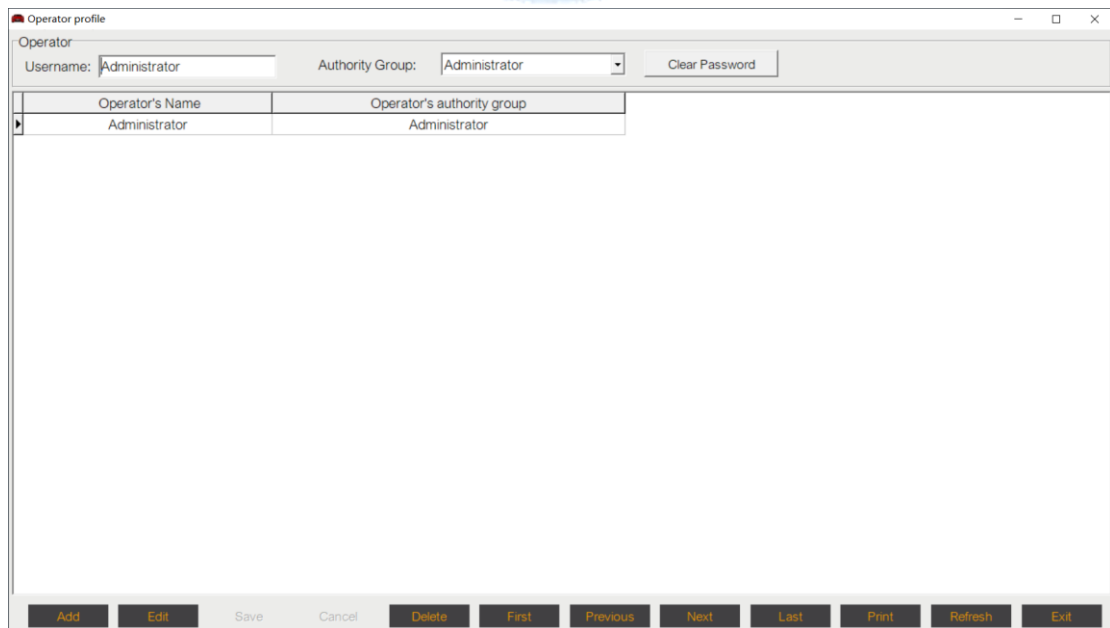
It is worth mentioning that Click **Print**,You can preview the report, and then click the upper left corner to print.



(4.3.1 "Print" interface)

4.4 Parking profile

The "**parking profile**" is for the management of parking lots, which can number and rename each parking lot.

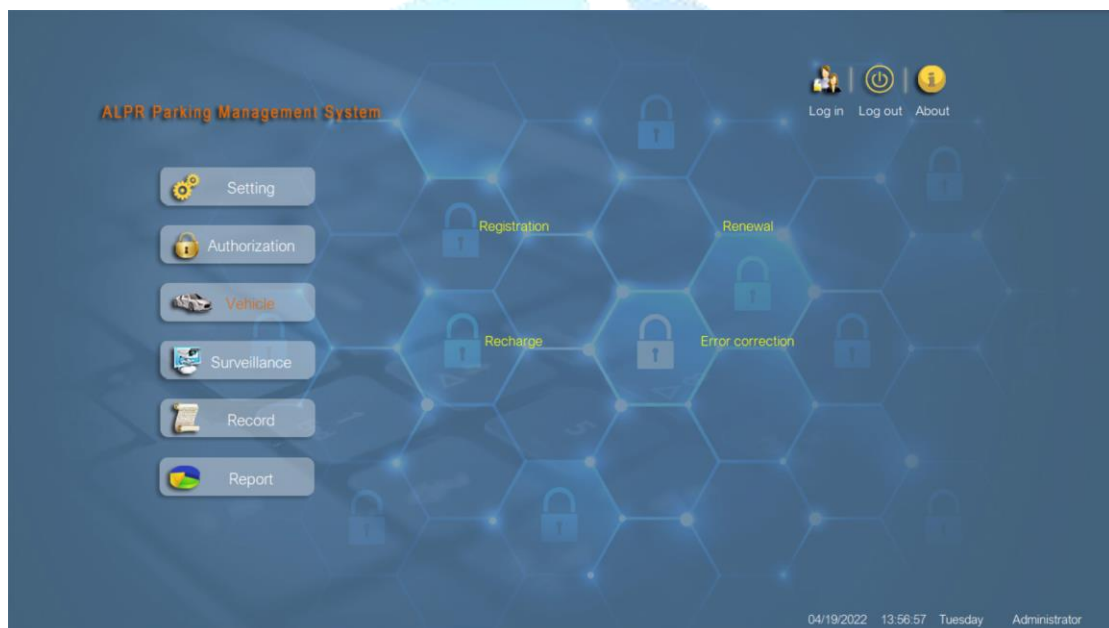


(4.4 "Paking profile" interface)

Chapter 4 Vehicle Management

5. Vehicle


Next is the function of the **"vehicle"** menu, which is also divided into three submenus. This setting is mainly aimed at the early registration of non temporary vehicles. Combined with the advanced license plate recognition function, it can improve the traffic speed faster and more efficiently.



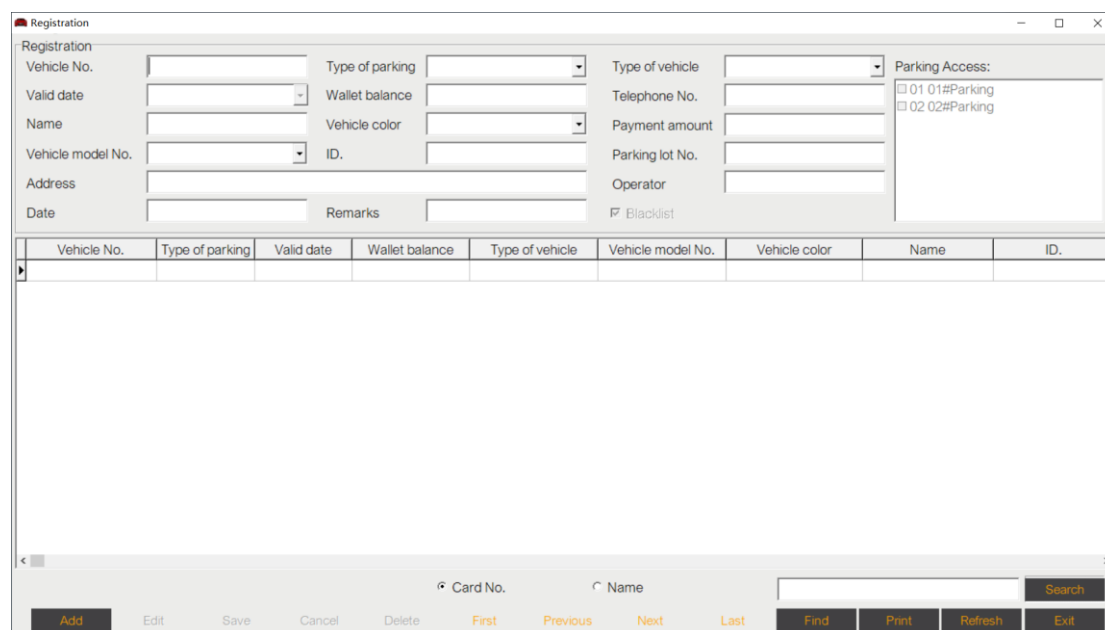
(5 "Vehicle" interface)

5.1 Registration

The first is the sub menu **"registration"**. This setting is to **register VIP / season car /**

cash vehicle. Also click  for add a new one. **Manually enter the car license plate number** (at this time, the license plate number is not a required item. Then enter the vehicle information and select the type of parking. **Note, Only VIP cars and season card cars** can select "fail date", which is extended by one month by default. Please pay attention to modifying the specific validity period. In addition, **only cash vehicles can enter "wallet balance"**, followed by the specific information

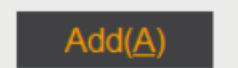
of the owner and vehicle, which is an optional item.



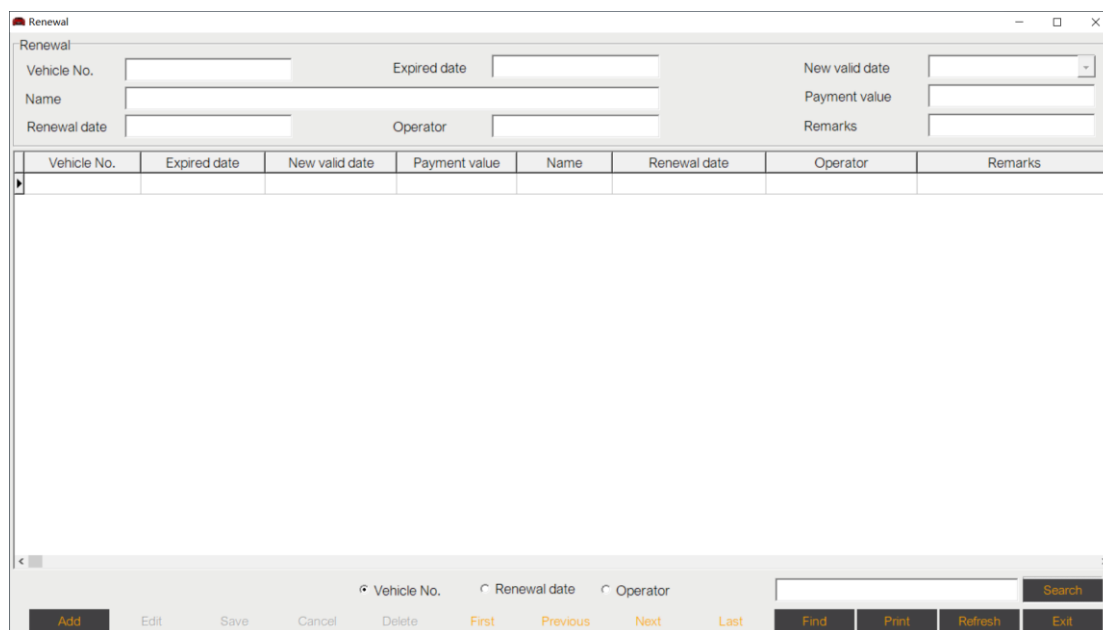
(5.1 "Registration" Interface)

5.2 Renewal

Then there is the "renewal" sub menu. This option is **only for VIP users and season**

users. Click , Then **enter the plate number**, and other information will pop up automatically. The same "**new failed date**" is postponed to one month by default, which can be modified according to the specific situation. Then, you need to fill in the received amount in the "**payment value**" column, and click OK, then the VIP car / monthly card car will be postponed successfully.

At the bottom of this interface, there is a query function, which can query the recharge records according to the license plate number and the operator.

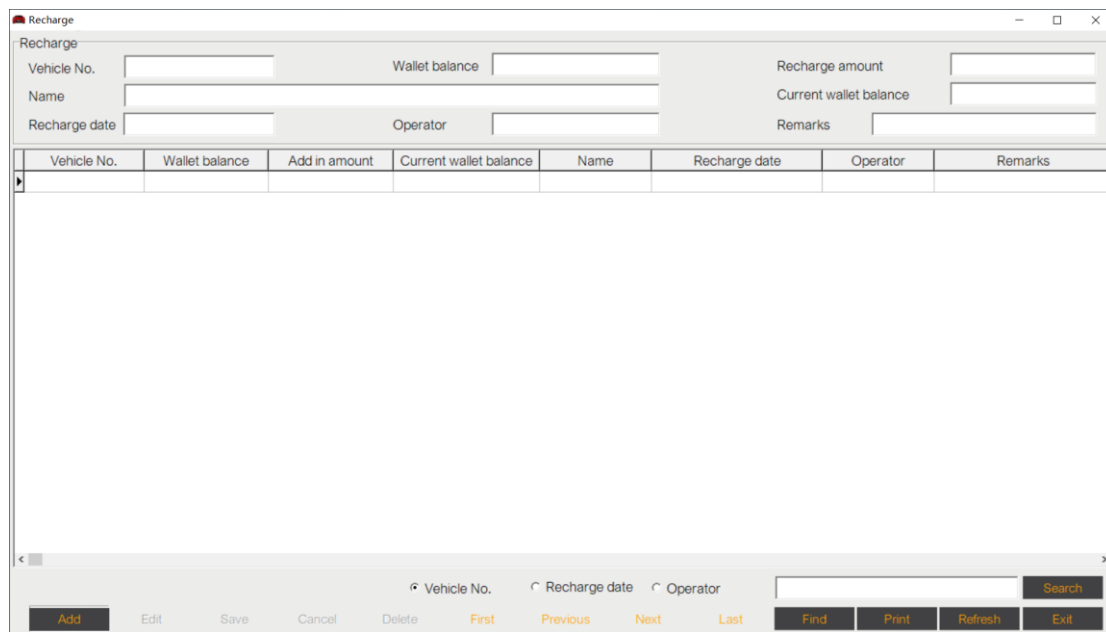


(5.2 "Renewal" interface)

5.3 Recharge

In the "recharge" sub menu, it is for **the recharge and payment of stored value vehicles**. The operation method is the same as above.

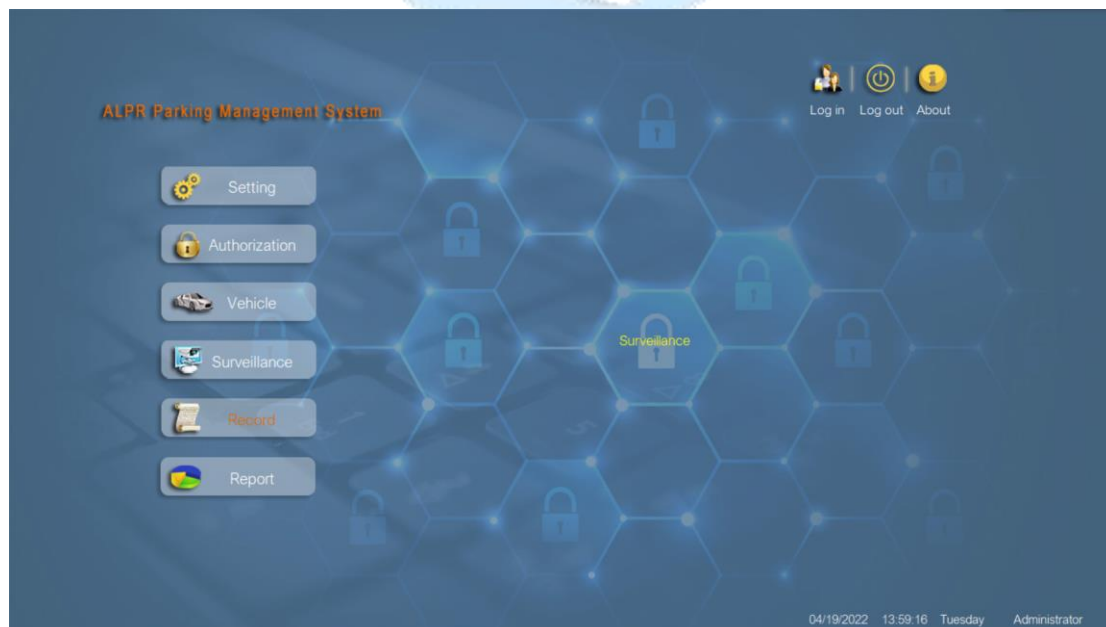
In the "vehicle" menu, you can click , You can preview the report, and then click the upper left corner to print.



(5.3"Recharge" Interface)

6. Surveillance

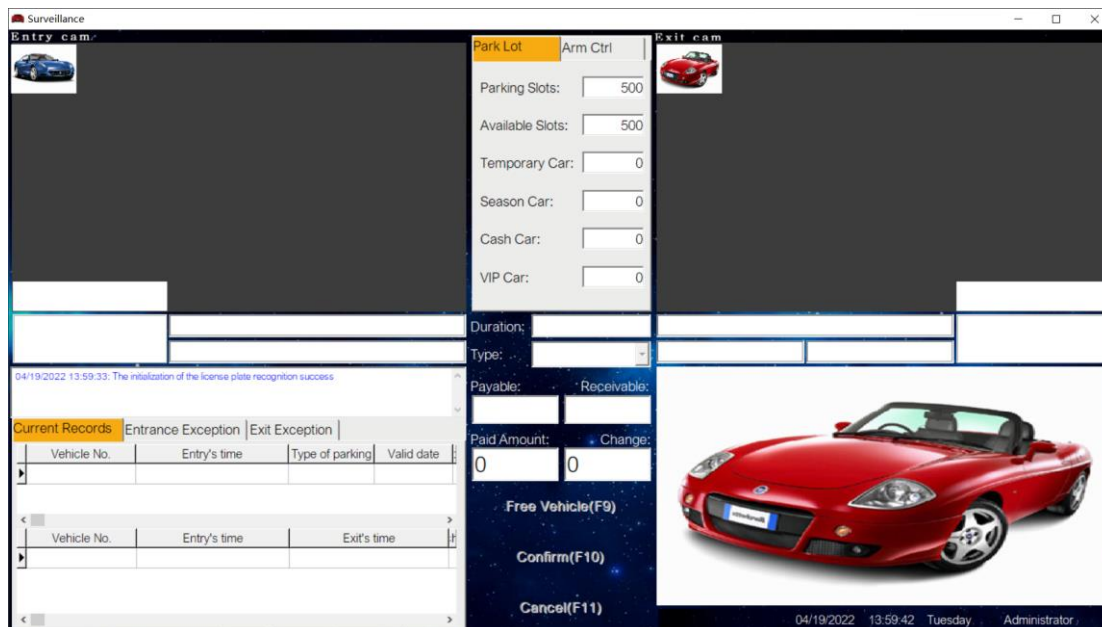
6.1 Next is the "**Surveillance**" menu, which has only one sub menu and is also one of the main functions in the process of using the software.



(6 "Surveillance" interface)

In this interface, the picture in the upper left corner is the **monitoring picture of the**

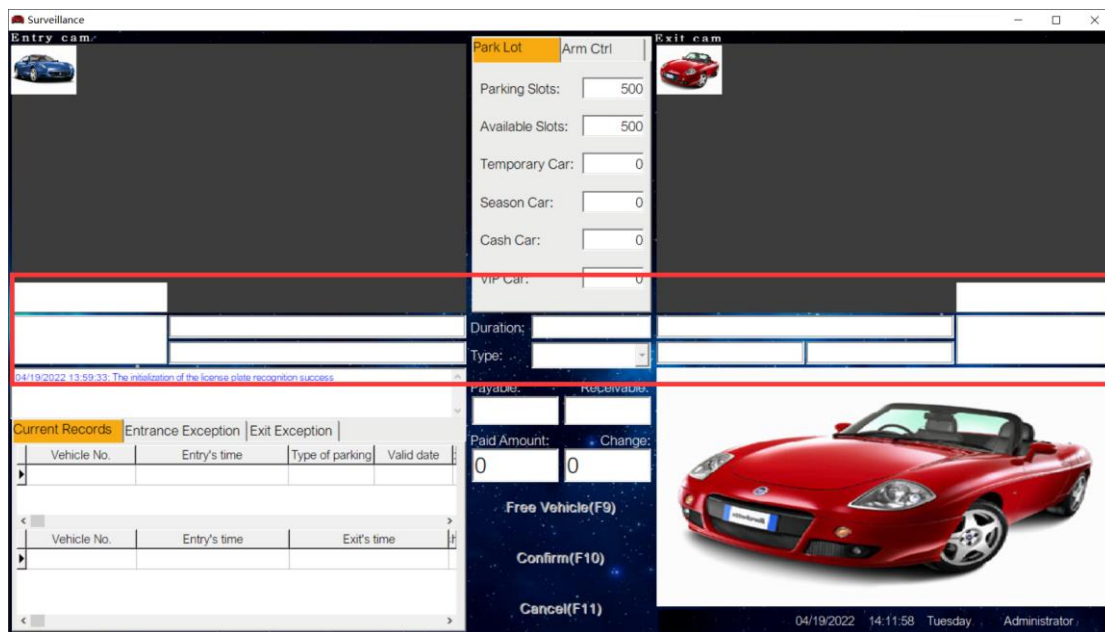
entrance, the picture in the upper right corner is **the monitoring picture of the exit**, and the picture in the lower right corner is the entrance picture called out according to the identification license plate of the exit. **For the cashier to compare.**



(6.1 "Surveillance" Interface)

6.2 The **entry vehicle information** will be displayed under the entry and exit monitoring screen. The information on the left is the entry vehicle information, **including vehicle model (VIP, seasoncard, temporary vehicle or cash vehicle), license plate number.** The validity period will be displayed for non temporary vehicles, and the balance will be displayed for cash vehicles.

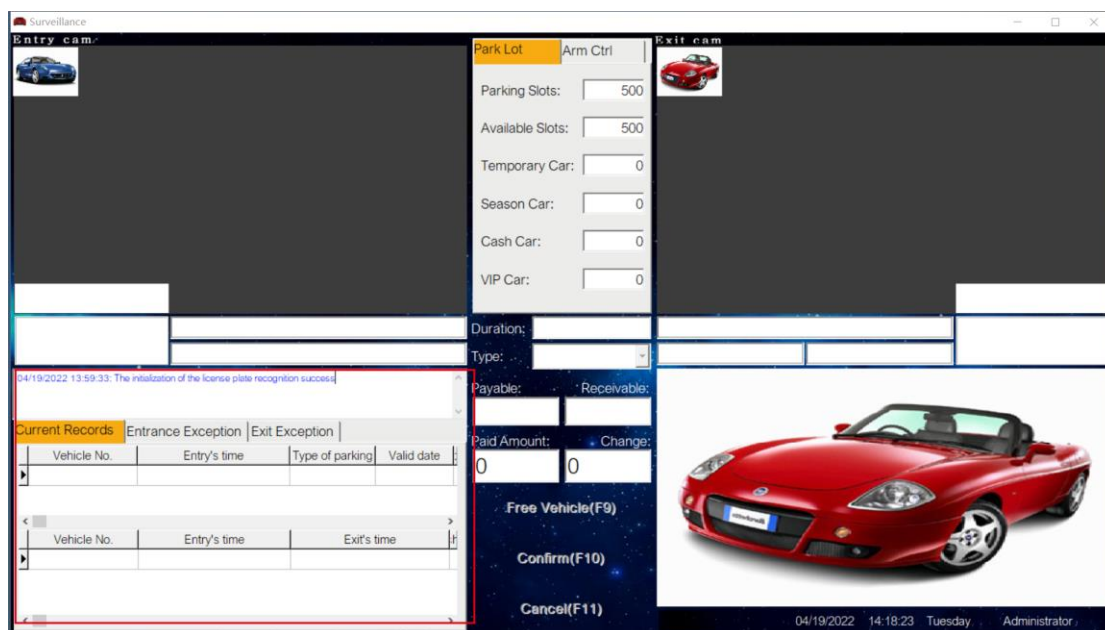
The information on the right is **the exit vehicle information**. The difference from the left is that the entry time of the vehicle will be displayed for comparison with the exit time.



(6.2 "Surveillance" Interface)

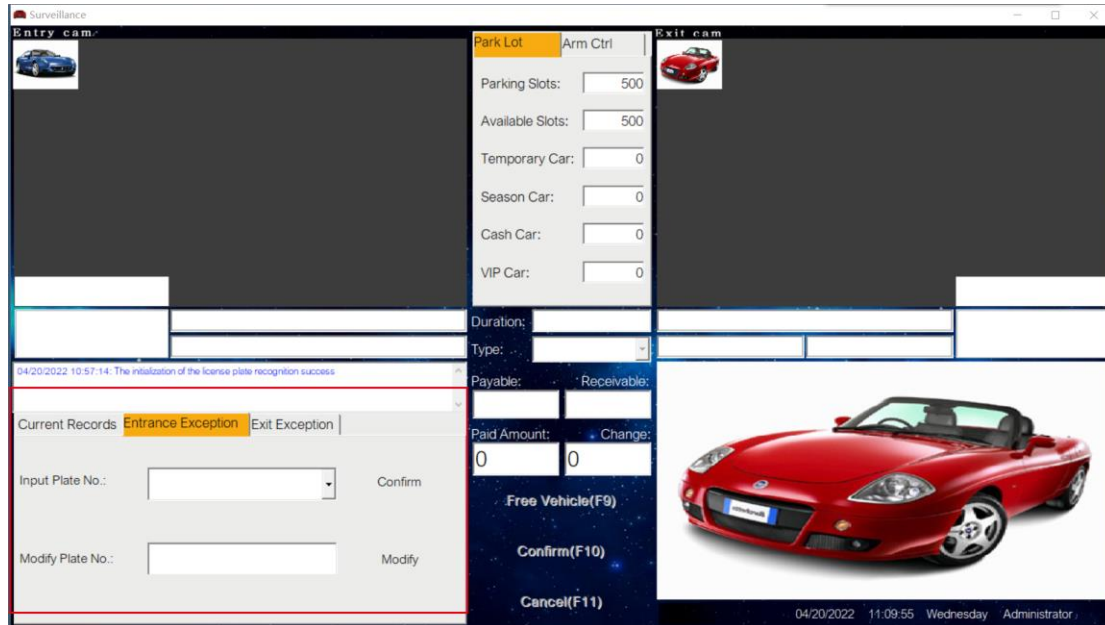
6.3 In the lower left corner of the screen, it is the **Current Records**. This status bar is the information of vehicles parked in the current parking lot, including vehicle information, parking lot information, operator information, etc.

The bottom row is the vehicle information of the exit, and when the vehicle enters and exits the venue, calculates the stay time and calculates the cost according to the model, if it is a VIP/season card vehicle, the expiration time will be real, if it is Cash vehicles will have a real balance.



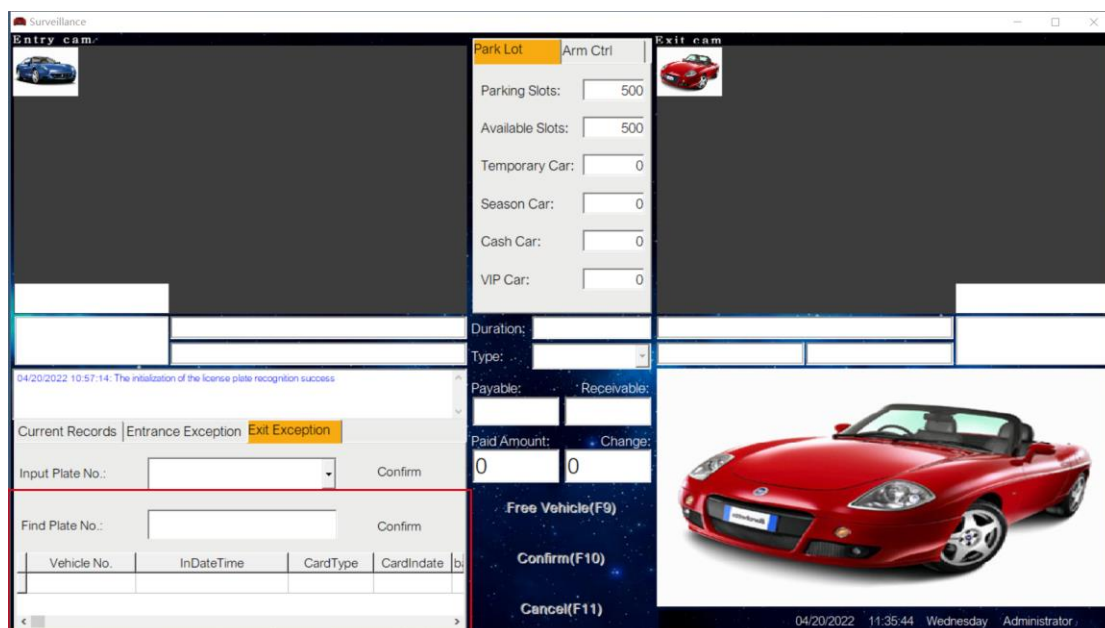
(6.3 "Surveillance" Interface)

6.4 In "Entrance Exception" & "Exit Exception" if there are other circumstances such as wrong / missing card reading of some vehicles, **you can manually enter the car Plate number**, and then click the corresponding road gate on the right to open the gate. And also you can modify the wrong number into right number.



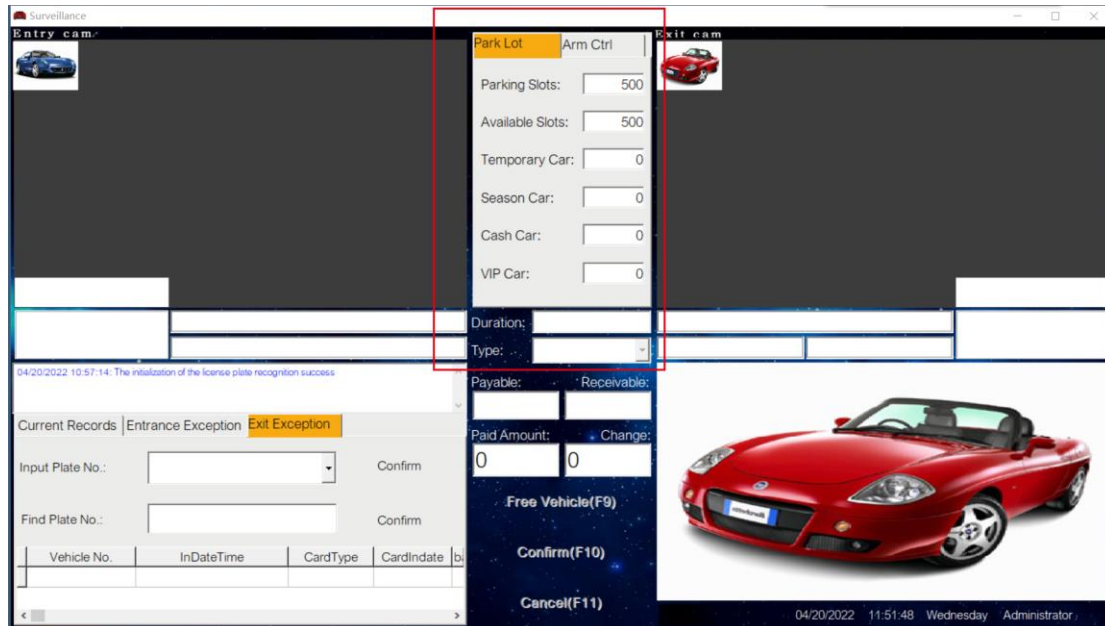
(6.4 "Surveillance" Interface)

6.5 In addition, the "Find Plate No." is for search the car plate, when you type the car plate in the blank ,it will shows All license plate numbers containing this character,and click **"Confirm"** to choose the one you want to search.



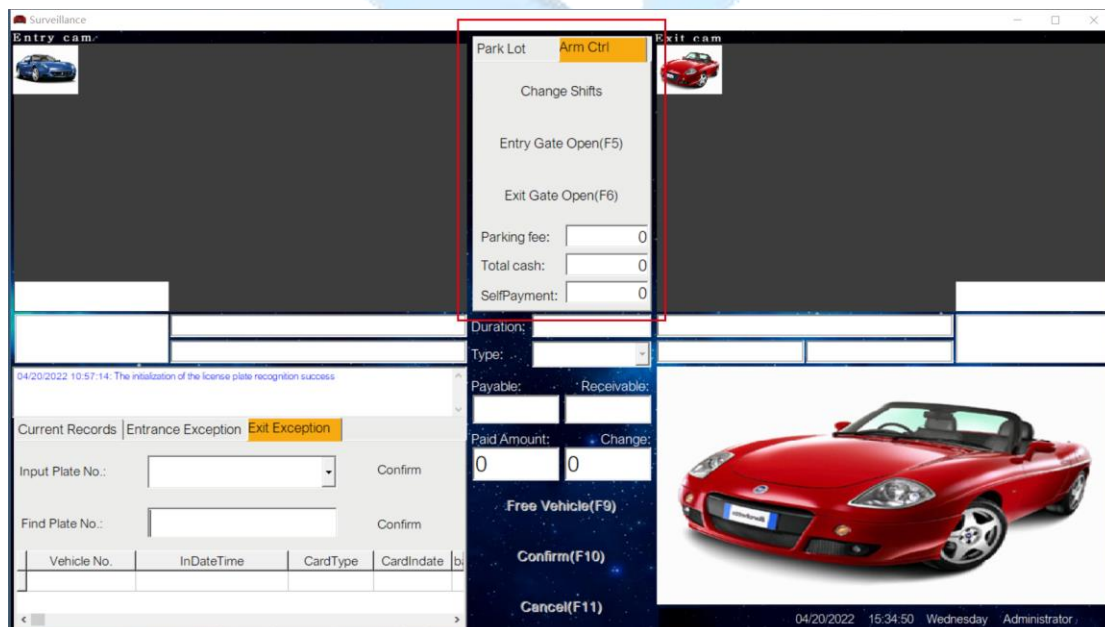
(6.5 "Surveillance" Interface)

6.6 In this area, you can view the vacancy status of the current parking lot and the collected parking fees



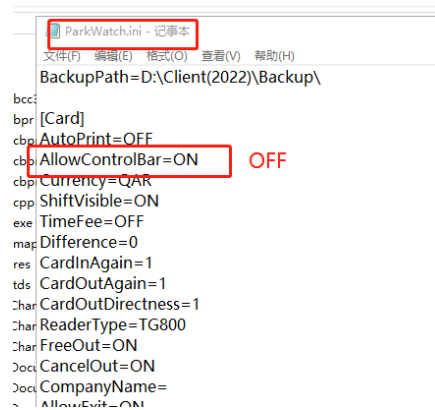
(6.6 "Surveillance" Interface)

6.7 The next "arm Ctrl" contains **shift change key** (convenient for cashier shift change operation) and manual gate opening command of each gate. And total parking fee with each payment way.

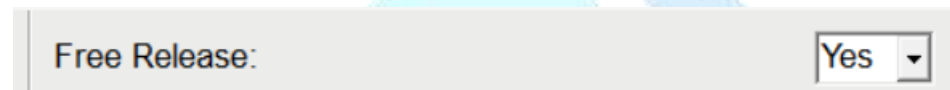


(6.7 "Surveillance" Interface)

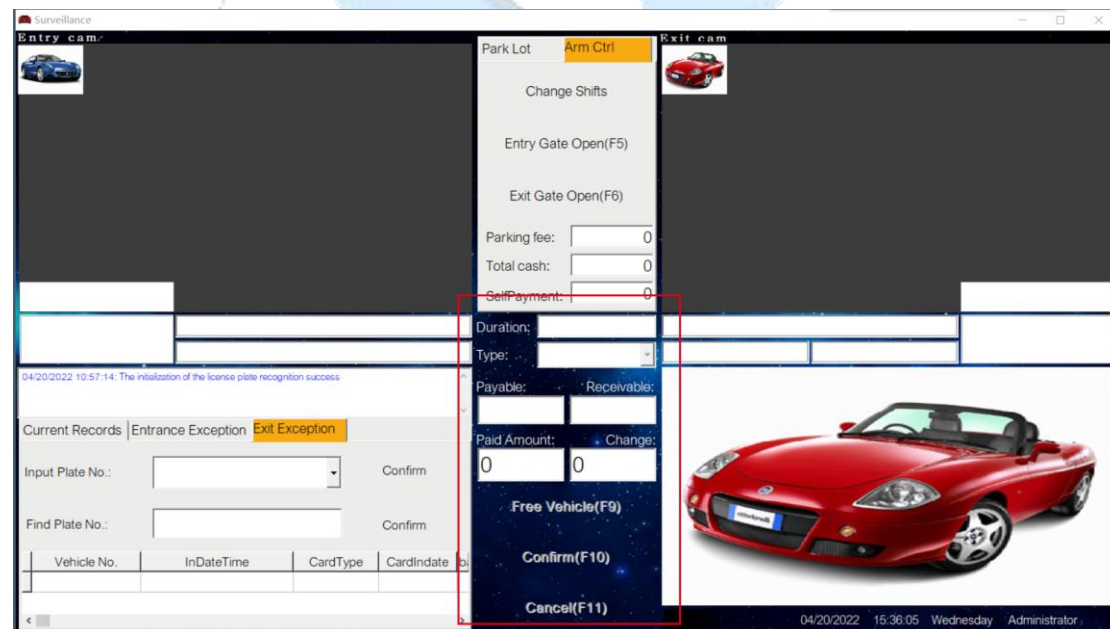
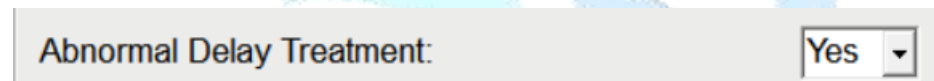
6.8 If you do not need shortcut key operation, you can set cancel in the configuration file.



6.9 This area is the record of dwell time, vehicle type, a / R / actually received, in which "free vehicle" corresponds to the above mentioned



"Confirm" button refers to the release button after the cashier confirms the receipt of parking fee, while "Cancel" button is to cancel the exit record, corresponding to the above-mentioned

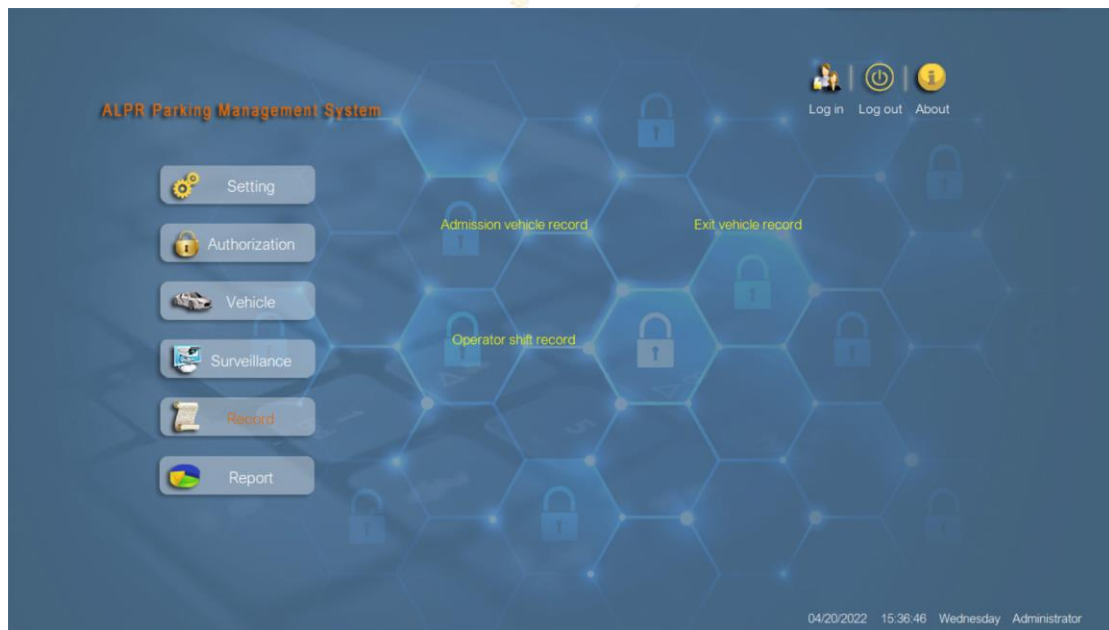


(6.9 "Surveillance" Interface)

Chapter 5 Record and Report

7. Record

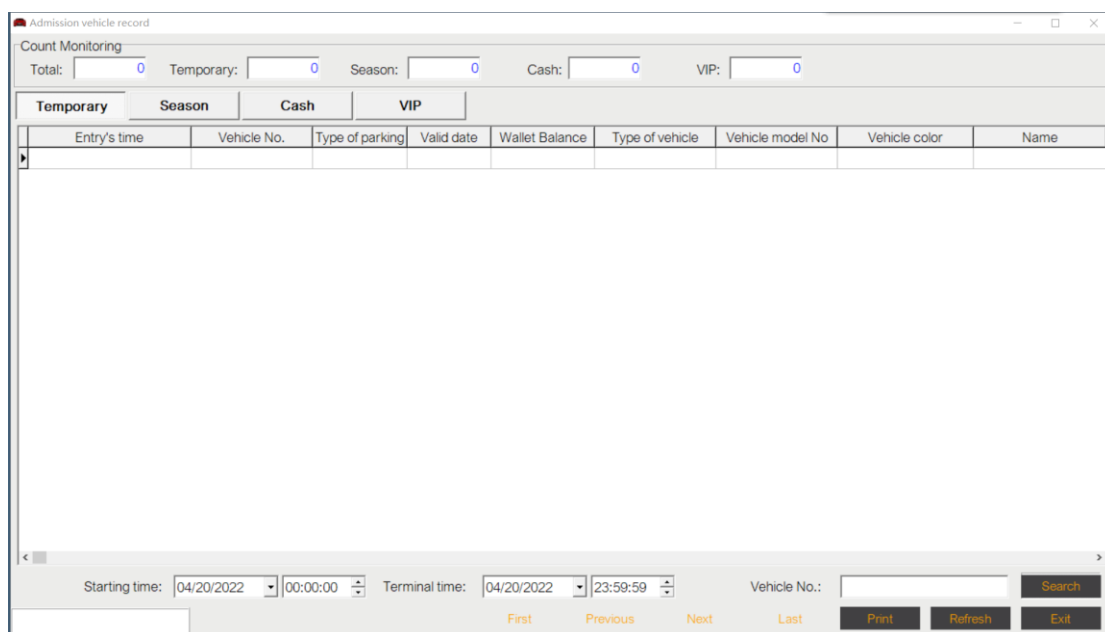
Next is the **"record"** menu, which includes three submenus: **"Admission vehicle record"**, **"exit vehicle record"** and **"operator shift record"**. This setting is for the query of import and export traffic flow in the parking lot and the management of cashier shift change records.



(7 "Record" Interface)

7.1 Admission vehicle record

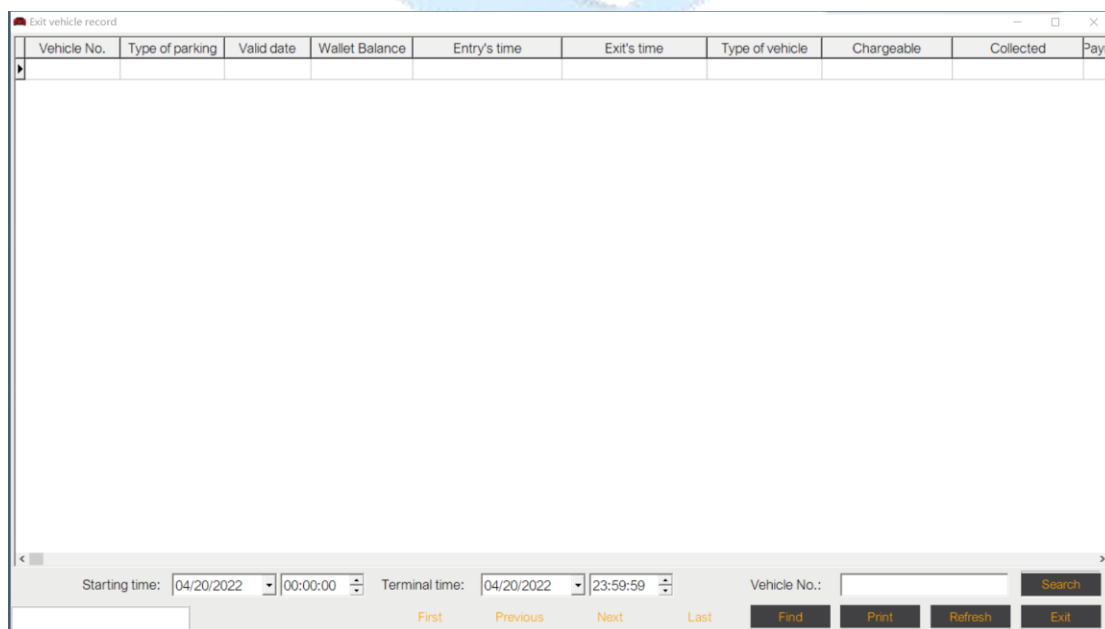
In the interface, we can see the total vehicles and vehicles of various models, in which the entry time of each vehicle and the expiration time of VIP and monthly card vehicles will be displayed, and we can query by category. In addition, we can query the traffic flow through specific time period below, or enter specific license plate to query the entry record.



(7.1 "admission vehicle Record" Interface)

7.2 Exit vehicle record

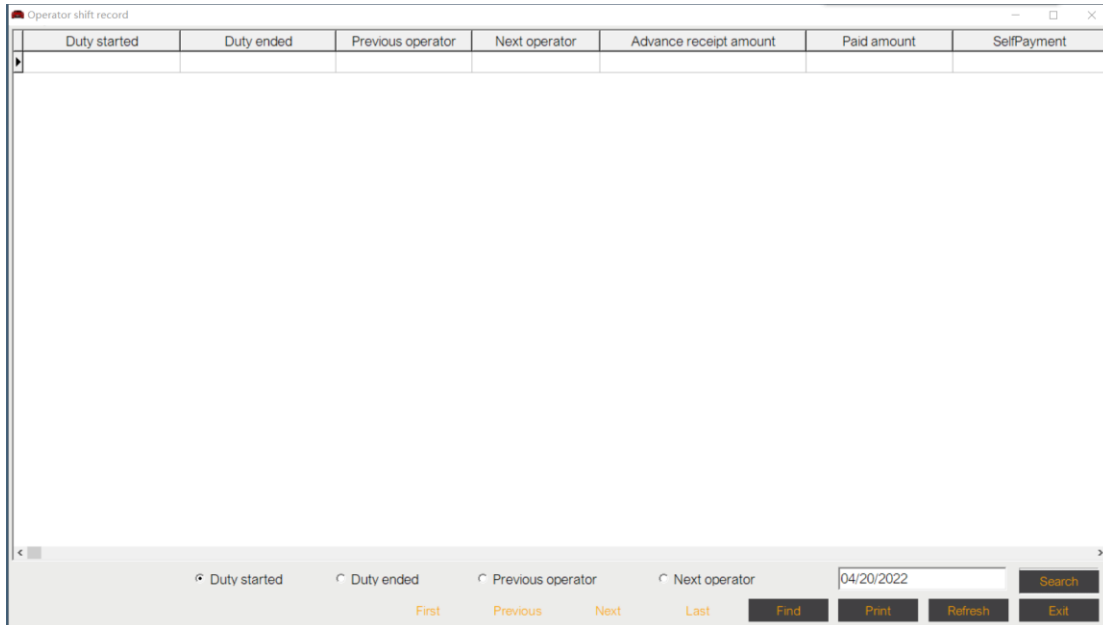
Similarly, in "exit vehicle record", you can query the exit vehicle records and information in the same way.



(7.2 "Exit vehicle Record" Interface)

7.3 Operator shift record

In "operator shift record", we can **query** the shift change records of all cashiers, including the personal data of cashiers, starting time of work, parking fees, etc.

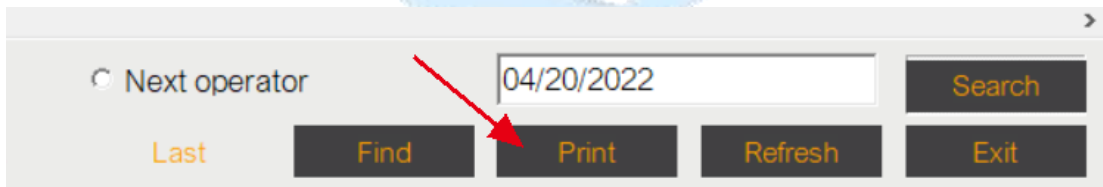


Duty started	Duty ended	Previous operator	Next operator	Advance receipt amount	Paid amount	SelfPayment

☐ Duty started
 ☐ Duty ended
 ☐ Previous operator
 ☐ Next operator

(7.3 "Operator shift record" Interface)

7.3.1 Click "Print" to preview the queried data and support printing

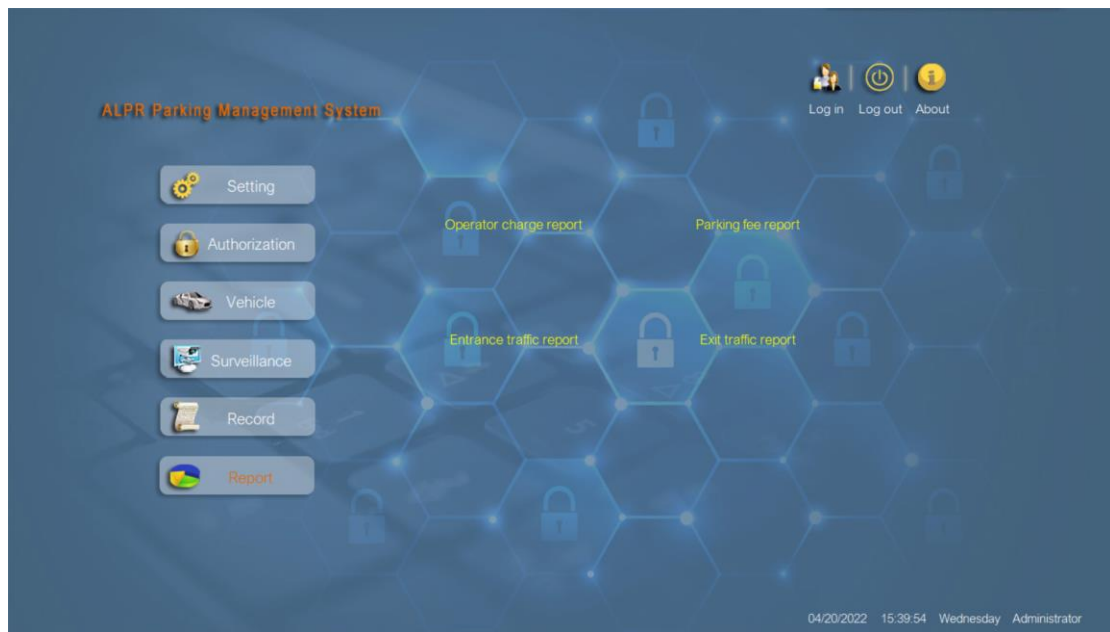


☐ Next operator

(7.3.1 "Print" Interface)

8. Report

8.1 Next is the "report" menu, which is divided into four submenus, namely "operator charge report", "parking fee report", "entry traffic report" and "exit traffic report"



(8 "Report" Interface)

8.2 Based on the **8 models set in the previous menu**, the "report" menu will make the traffic flow management of the entrance based on these 8 models.

Setting parameters

System | Entry And Exit | Other

Storage Maintenance

Storage Days Of Captured Images: 90

Delete Expired Images: No

Storage Days Of Shifting Records: 365

Storage Days Of Entry And Exit Records: 180

Delete Expired Enter And Exit Records: No

Delete Expirted Shifting Records: No

Parking Space

Total Parking Space: 500

Minimum Balance/Allowing Residence Time(Min)/Decimal Value

Mini Balance: 5

Residence Time: 2

Decimal Value: 0

Image And Backup Database Setup

Entry Captured Image Location: D:\ParkWatchfvgjws\InPicture\

Exit Captured Image Location: D:\ParkWatchfvgjws\OutPicture\

Backup Database Location: D:\ParkWatchfvgjws\Backup\

Vehicle Type

01: Sedan

02: Bus

03: Van

04: Motorcycle

05: Other1

06: Other2

07: Other3

08: Other4

Workstation Setup

Current host No.: 01

Parking area access: 01

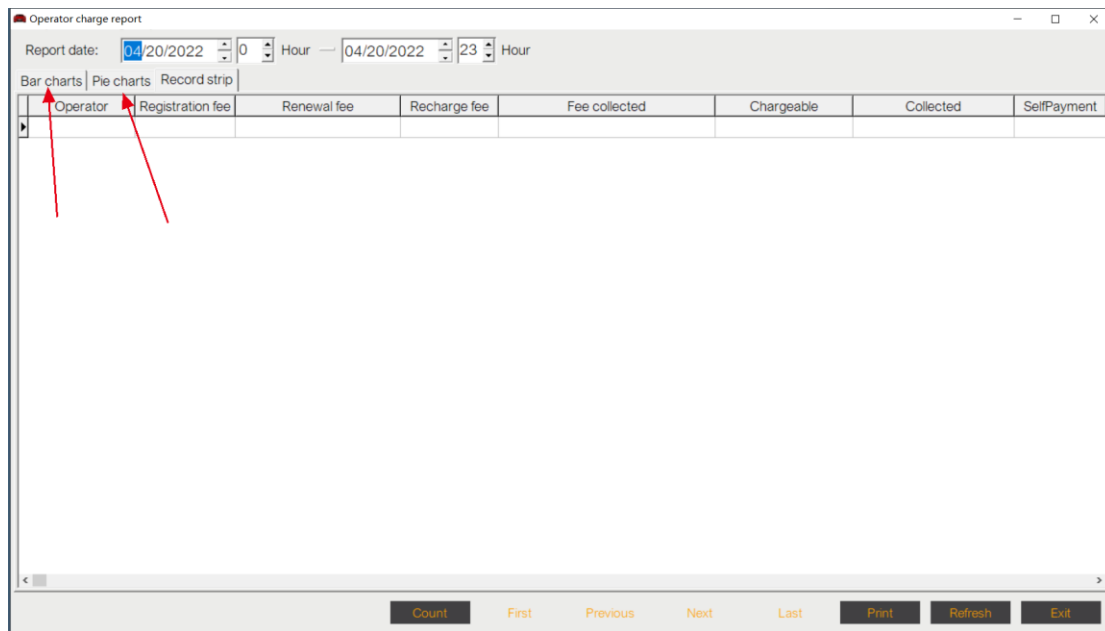
Lanes No.: 1

Confirm Exit

(8.2 "Other" Interface)

8.3 Operator charge report

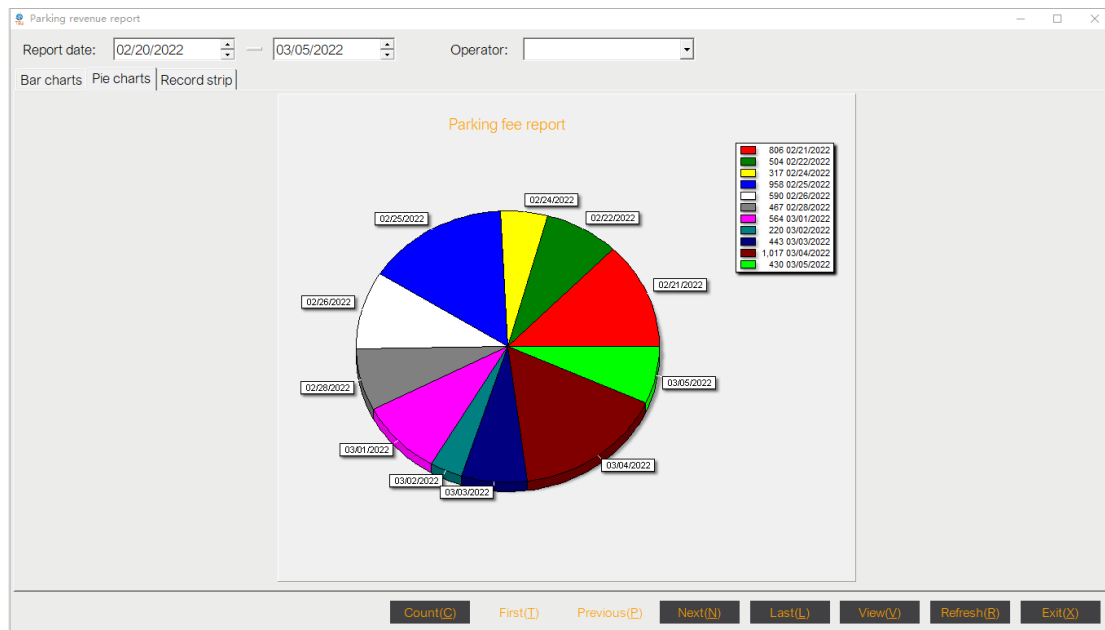
In "operator charge report", we can browse the summary based on **vehicle registration, recharge delay and other functions**, and set a specific time to query the registration time and cash balance of various types of vehicles. You can also select "bar charts" and "pie charts" to display data.



(8.3"operator charge report"interface)



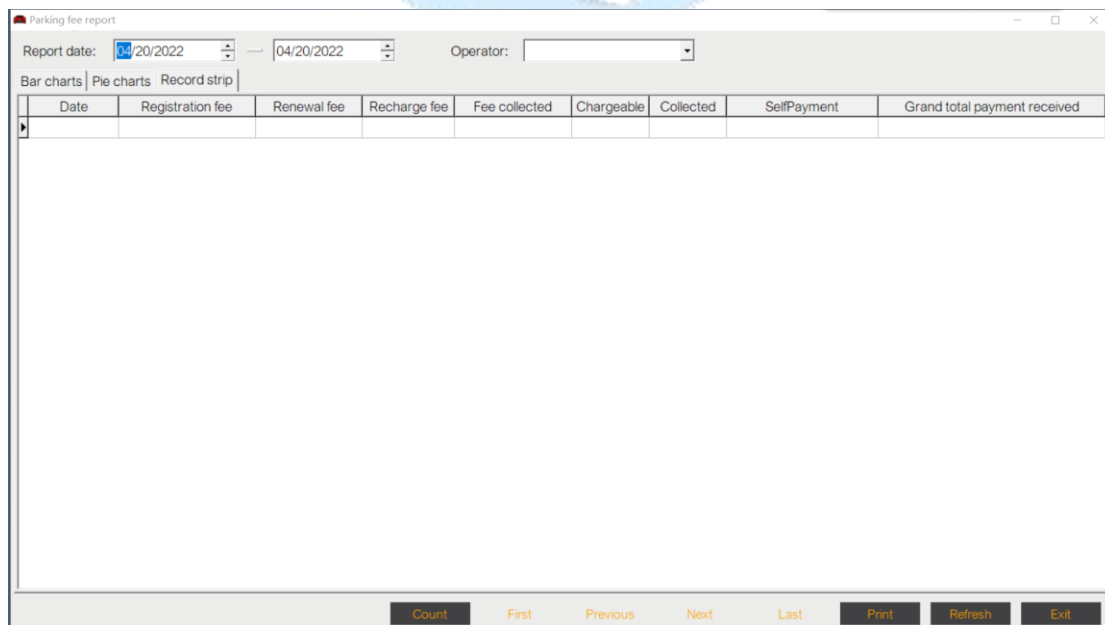
(8.3.1 "bar charts" interface)



(8.3.2 "pie charts" interface)

8.4 Parking fee report

The "parking fee report" has one more to view the parking payment records of a specific cashier in a certain period of time.

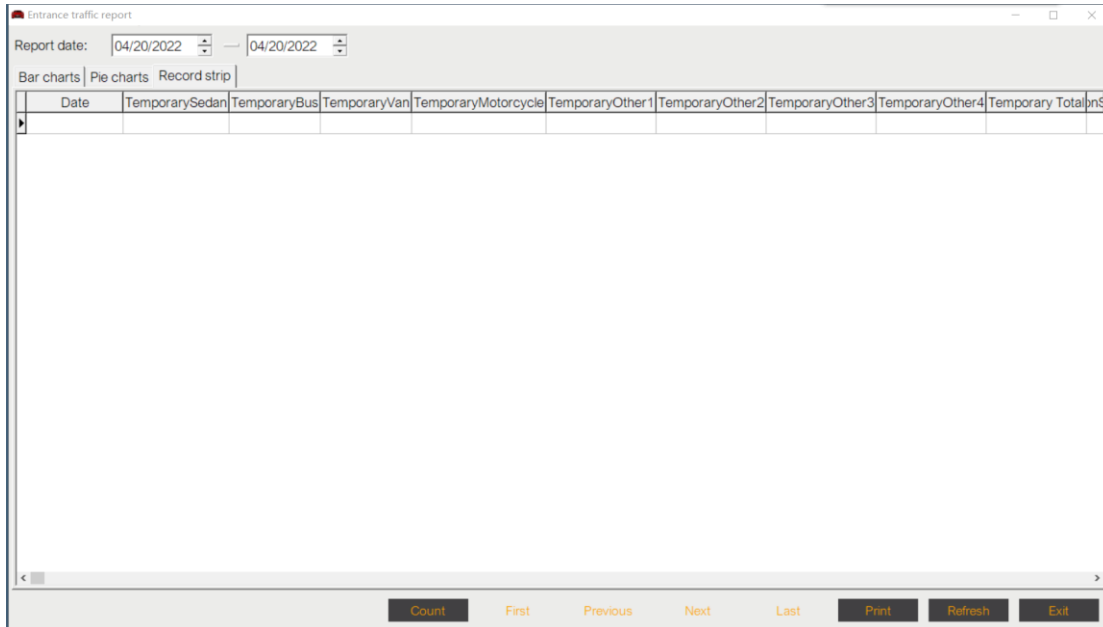


The screenshot shows the 'Parking fee report' window with the 'Record strip' tab selected. The table displays the following columns: Date, Registration fee, Renewal fee, Recharge fee, Fee collected, Chargeable, Collected, SelfPayment, and Grand total payment received. The table is currently empty, showing only the header row.

(8.4 "parking fee reports" interface)

8.5 Entrance traffic report

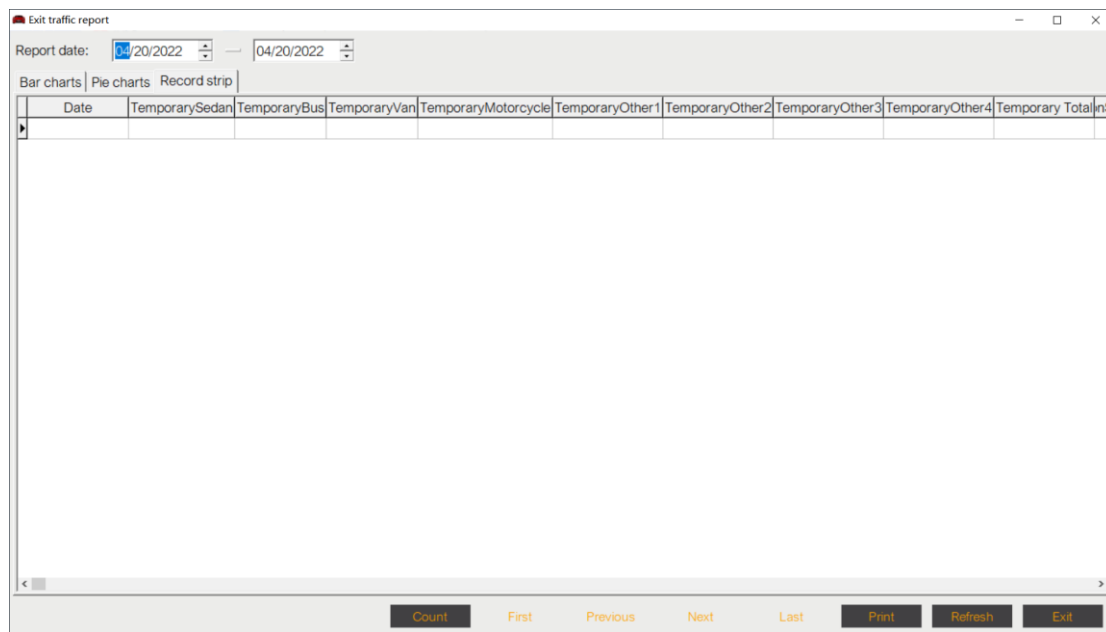
In **"entrance traffic report"**, it is the **traffic flow report displayed** according to the set 8 vehicle models.



(8.5 "entrance traffic report" interface)

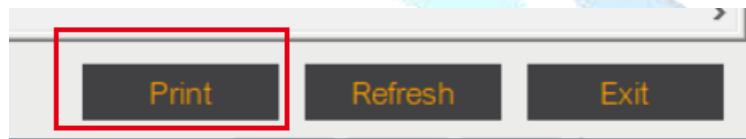
8.6 Exit traffic report

Similarly, **"exit traffic report"** displays the exit traffic report.



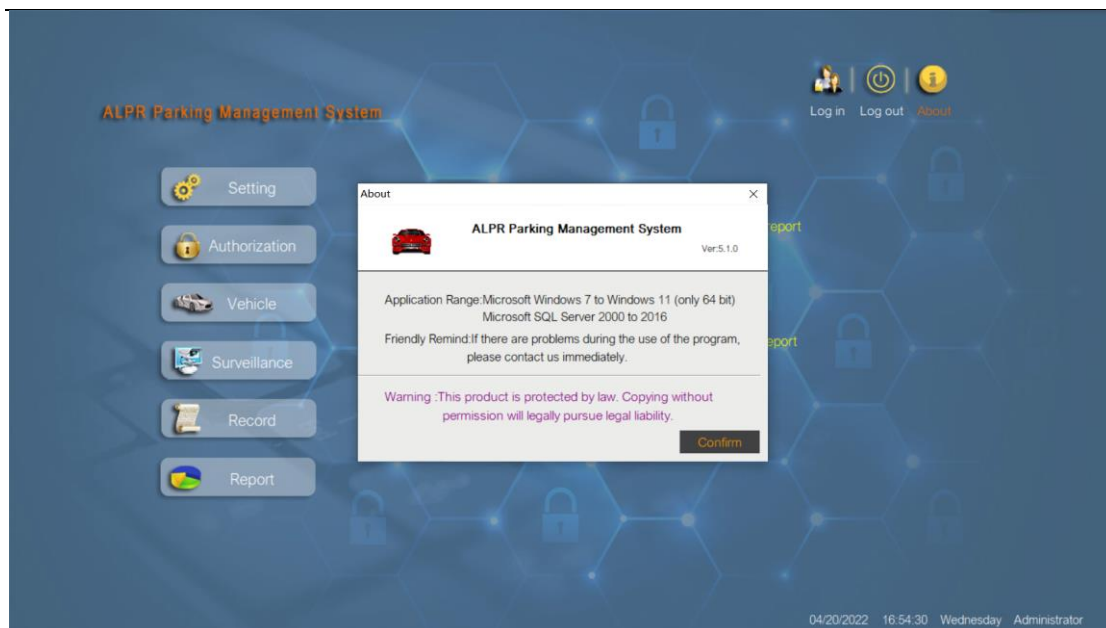
(8.6 "exit traffic report" interface)

8.7 Click "Print" to preview the queried data and support printing



9. About

9.1 The last "about" menu contains our company information, software version number, etc. This interface supports customization modification.



(9 "About" interface)

