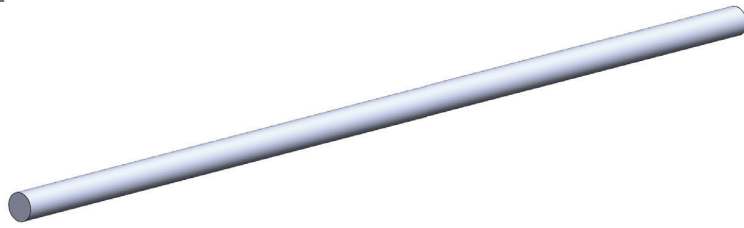




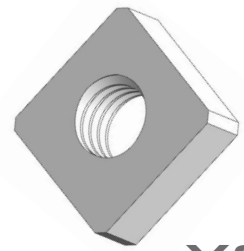
Scan to watch assembly video

*Design   Race   Innovate   RESK-03-1*

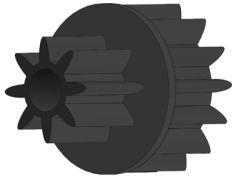
X2



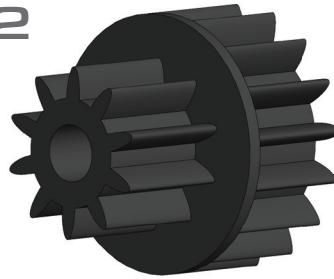
X3



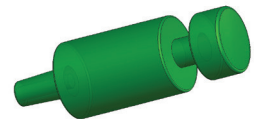
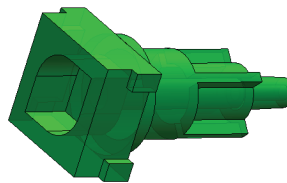
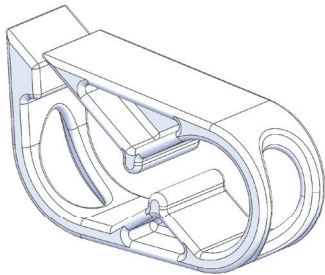
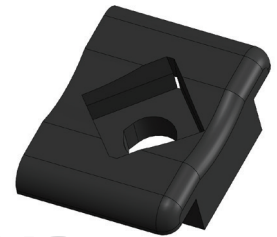
X2



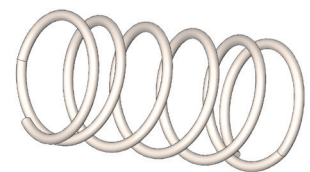
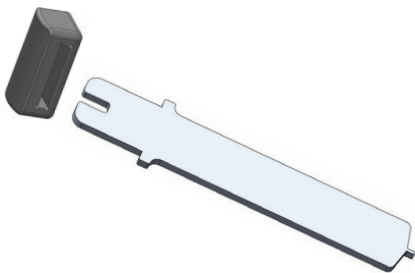
X2



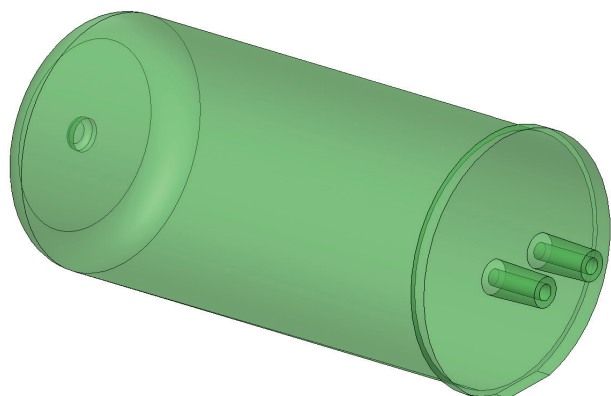
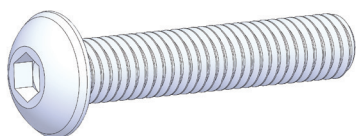
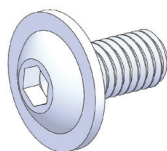
X2

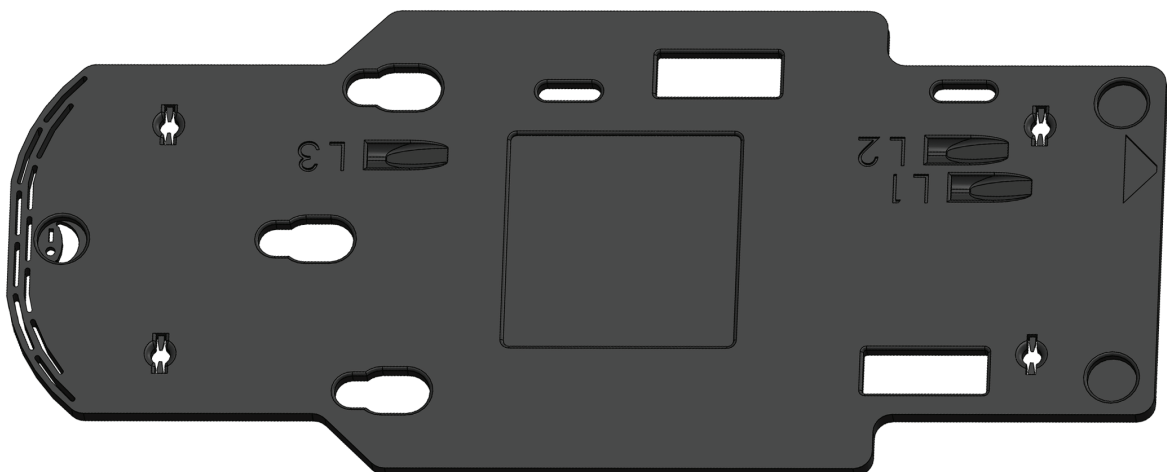
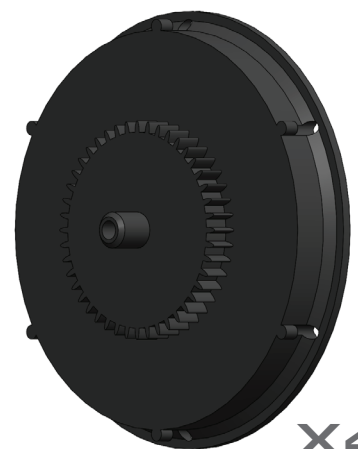
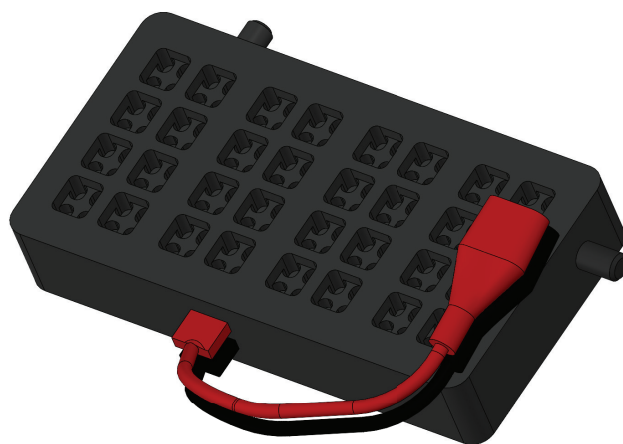
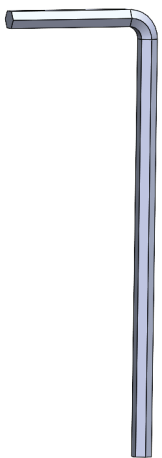
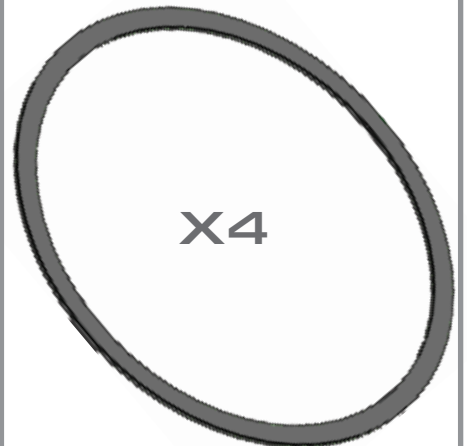
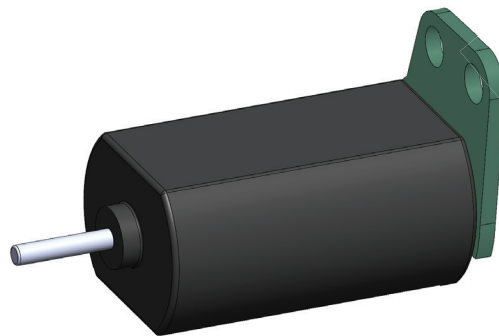
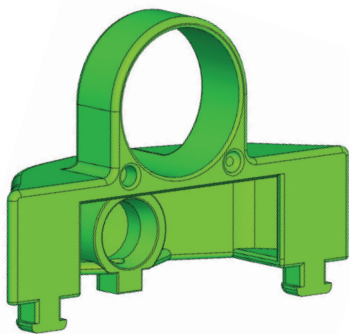
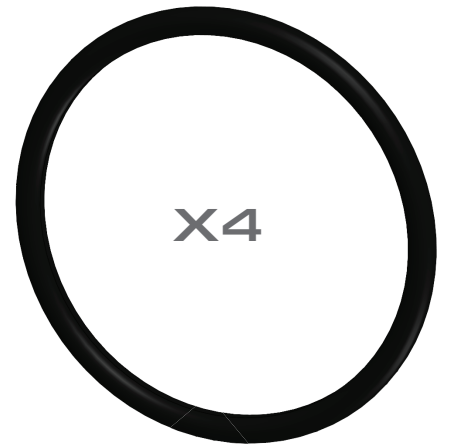
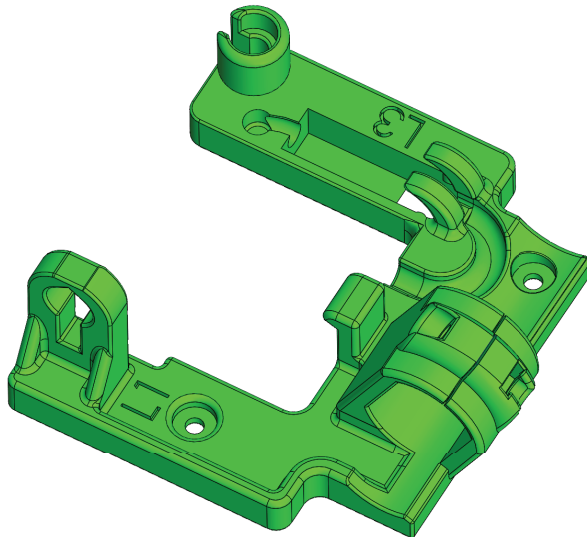
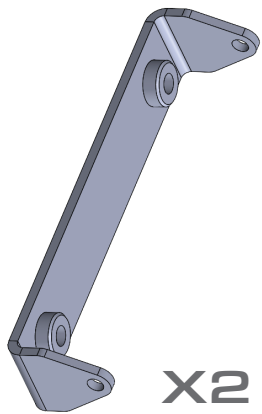


X2

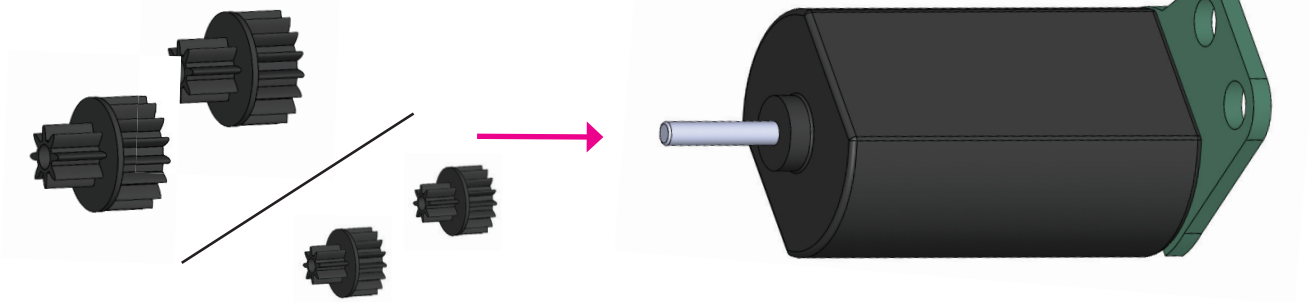


X6



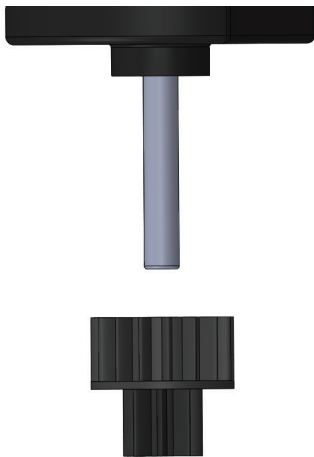


Choose one of four included gears.

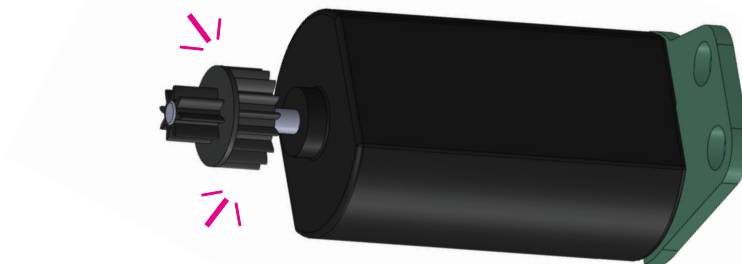
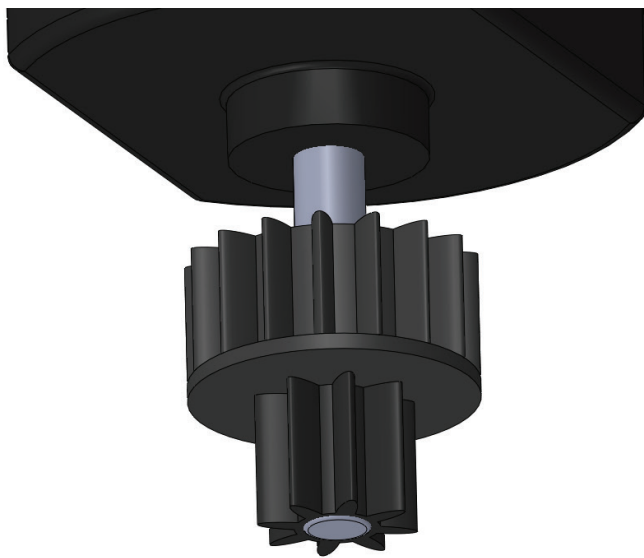


1.2 Push the unit against the table to ensure gear is connected.

A

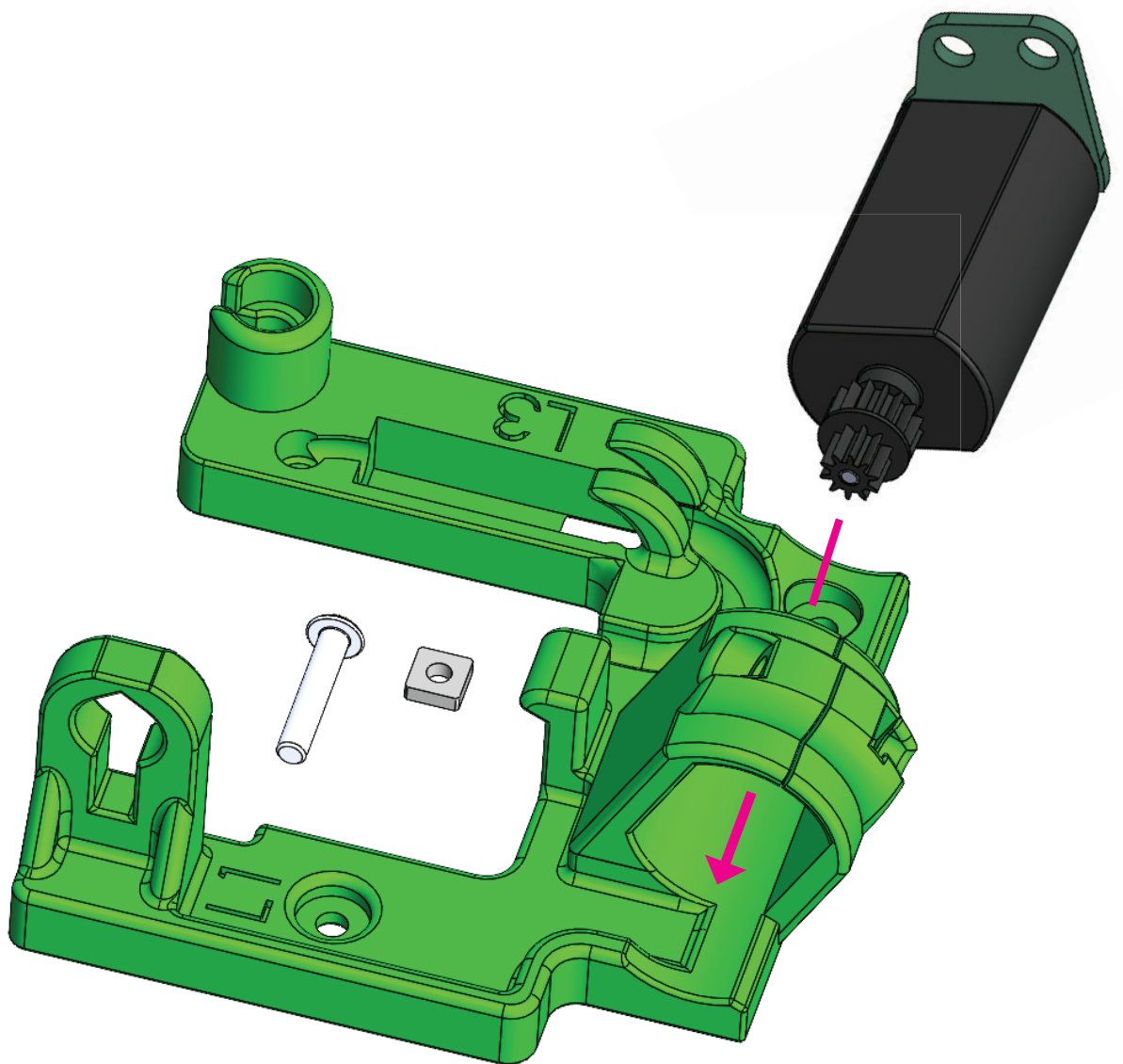


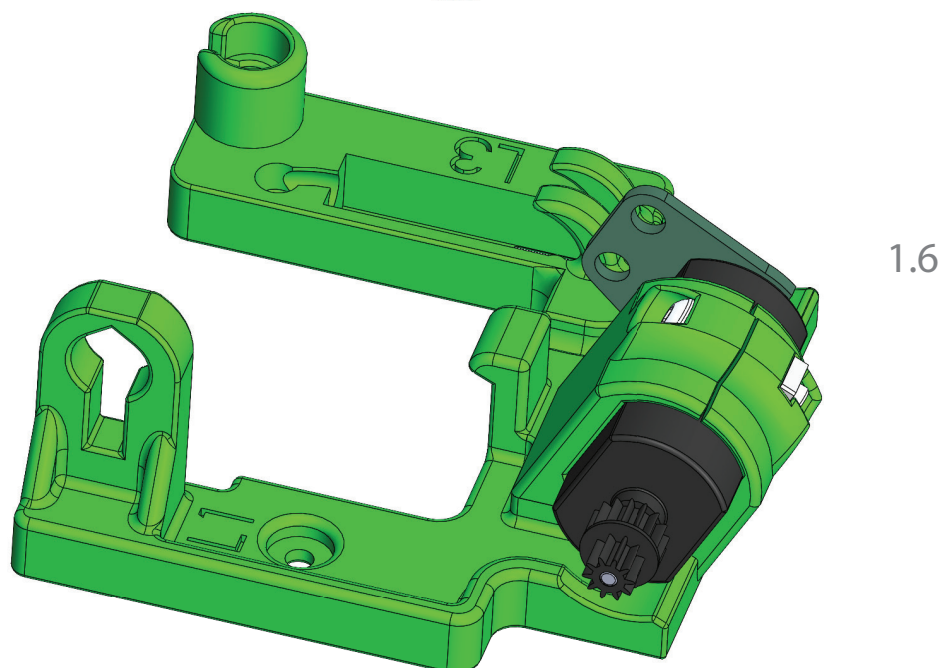
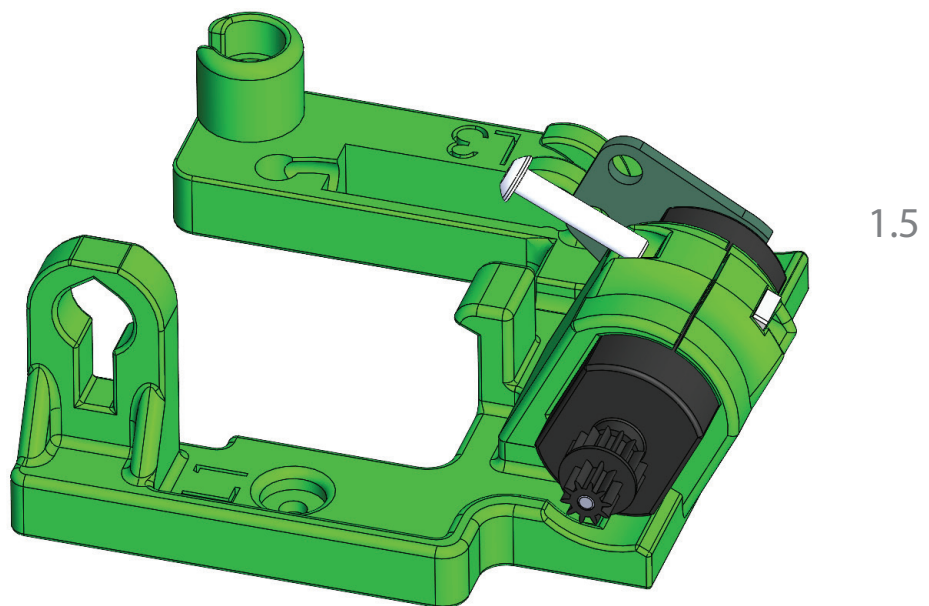
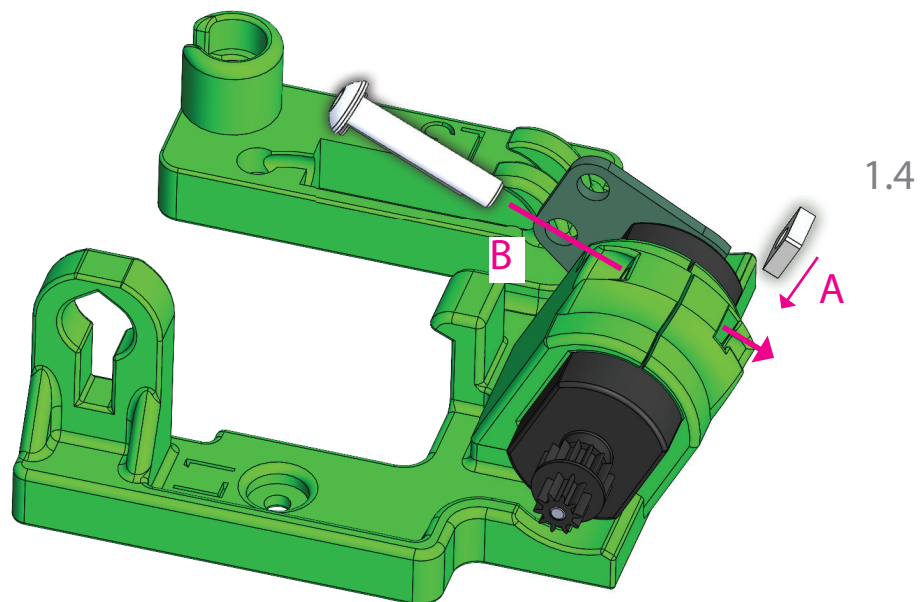
B





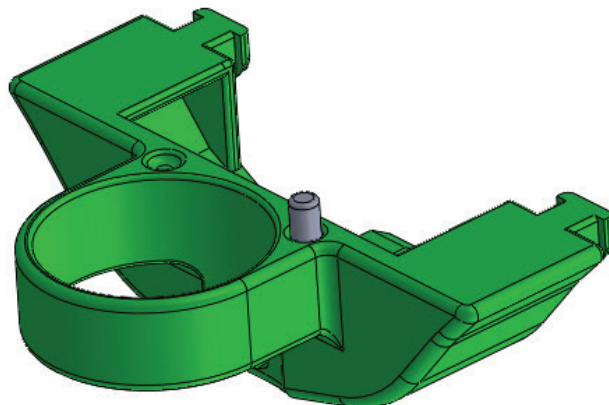
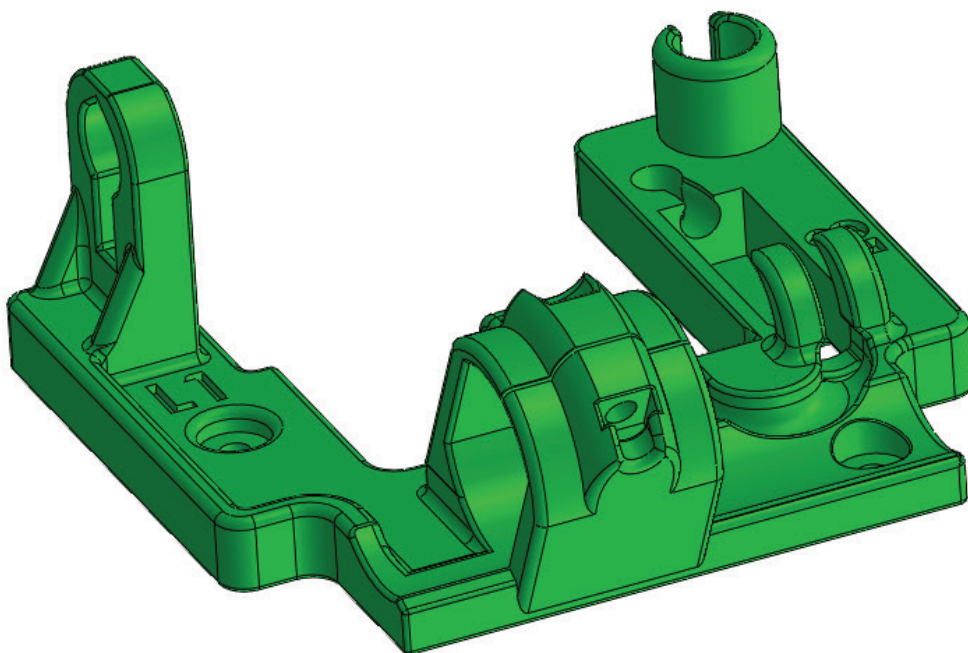
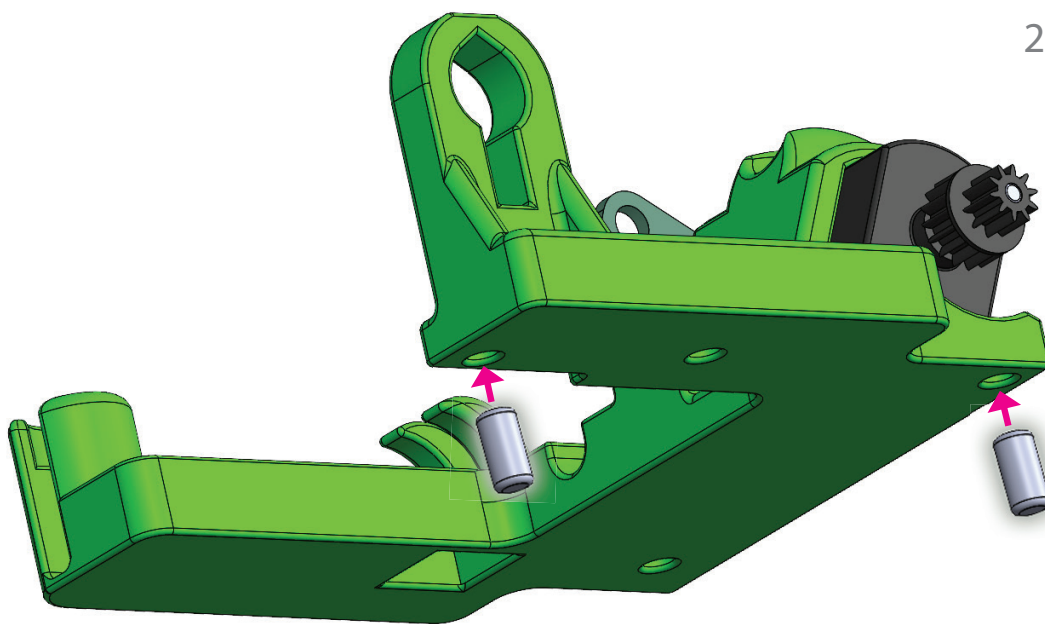
1.3

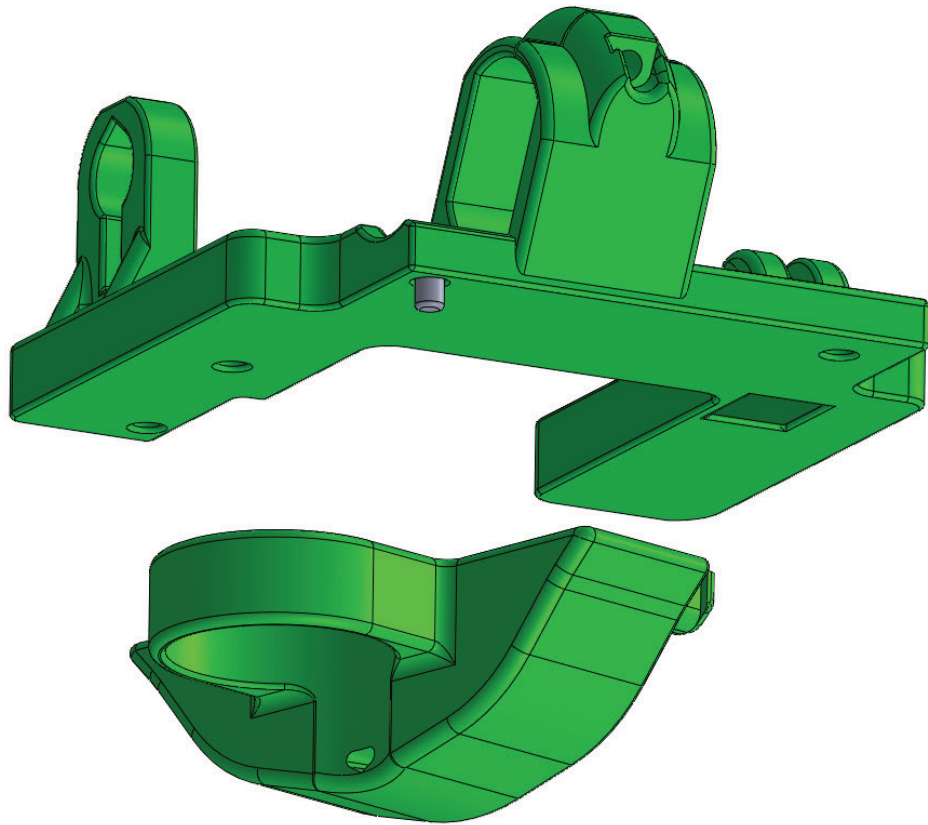




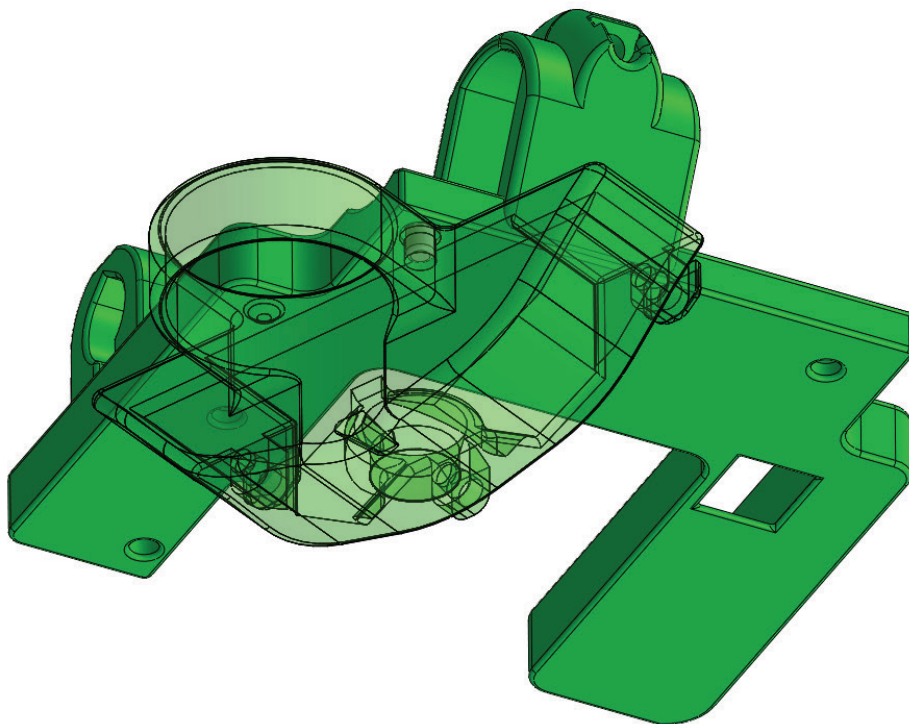
A

2.1

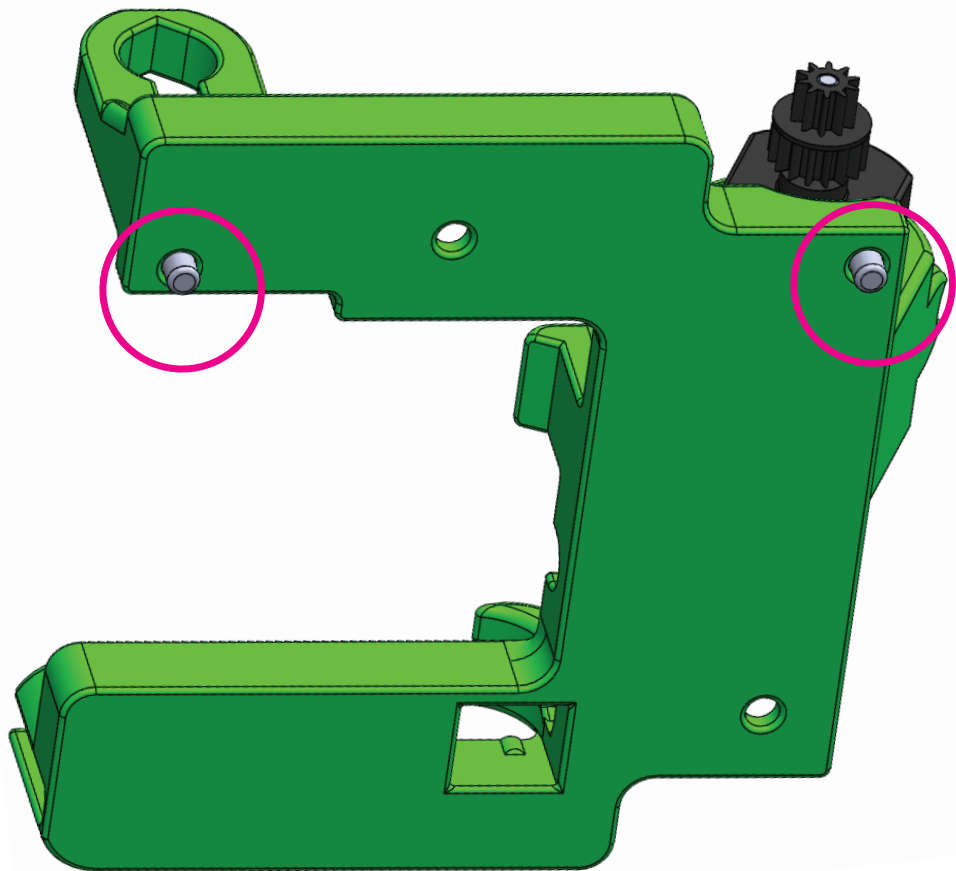




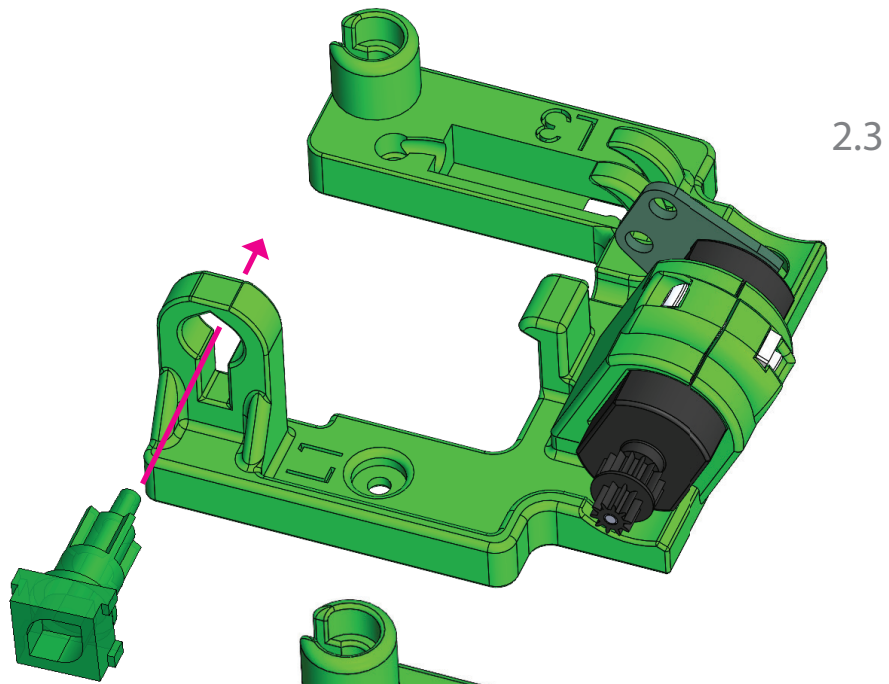
**B** Push the tabs (small metal parts) against a table or hard surface



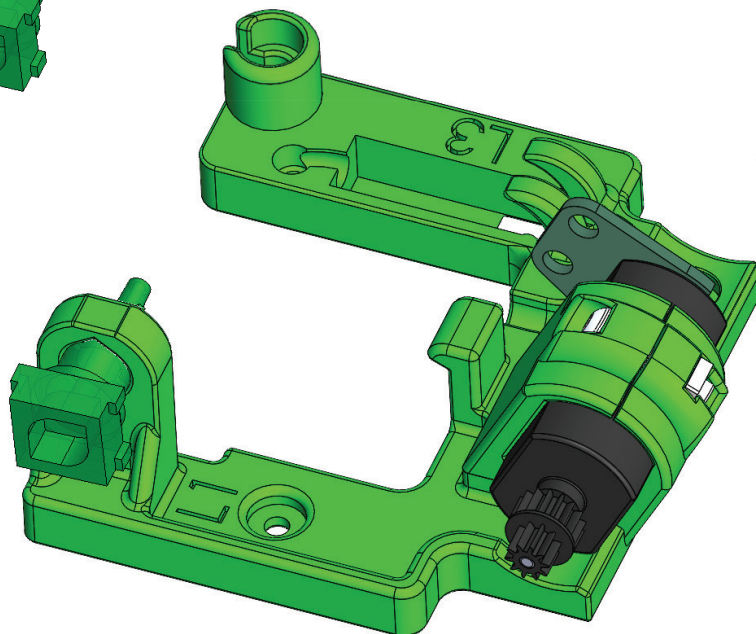
2.2



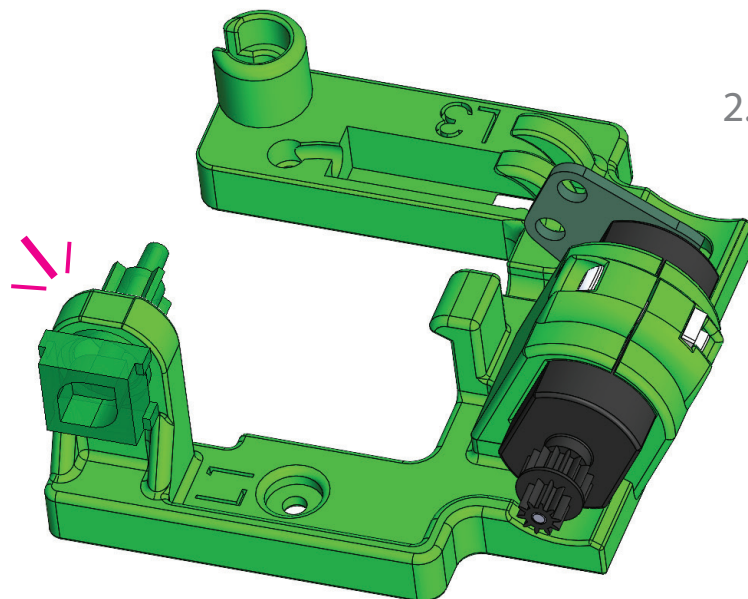




2.3

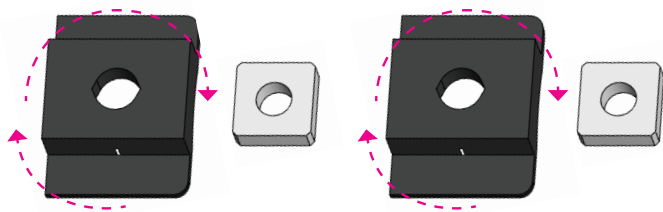


2.4

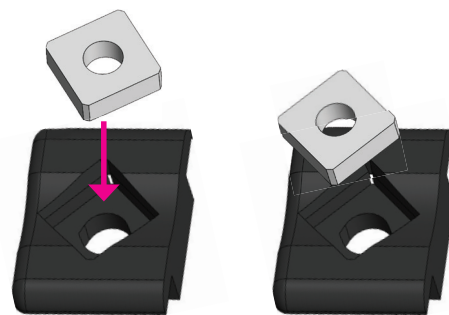


2.5

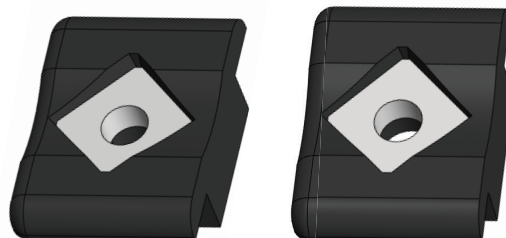
3.1



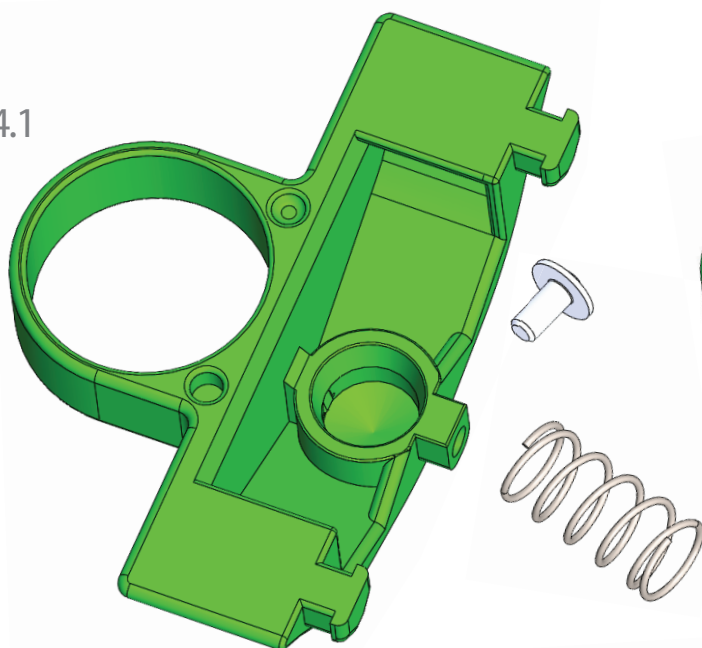
3.2



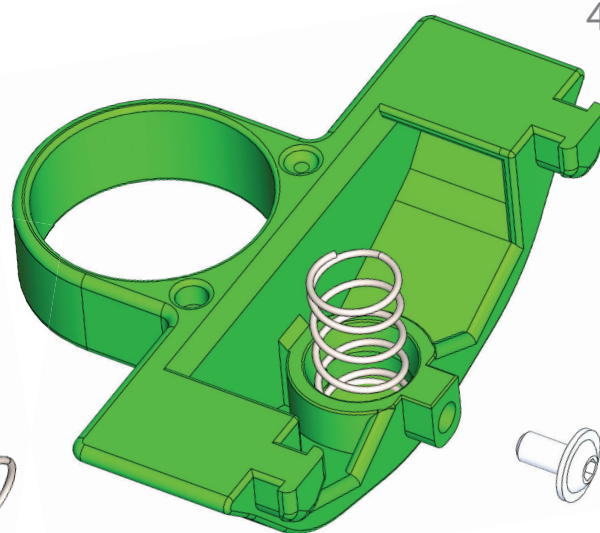
3.3



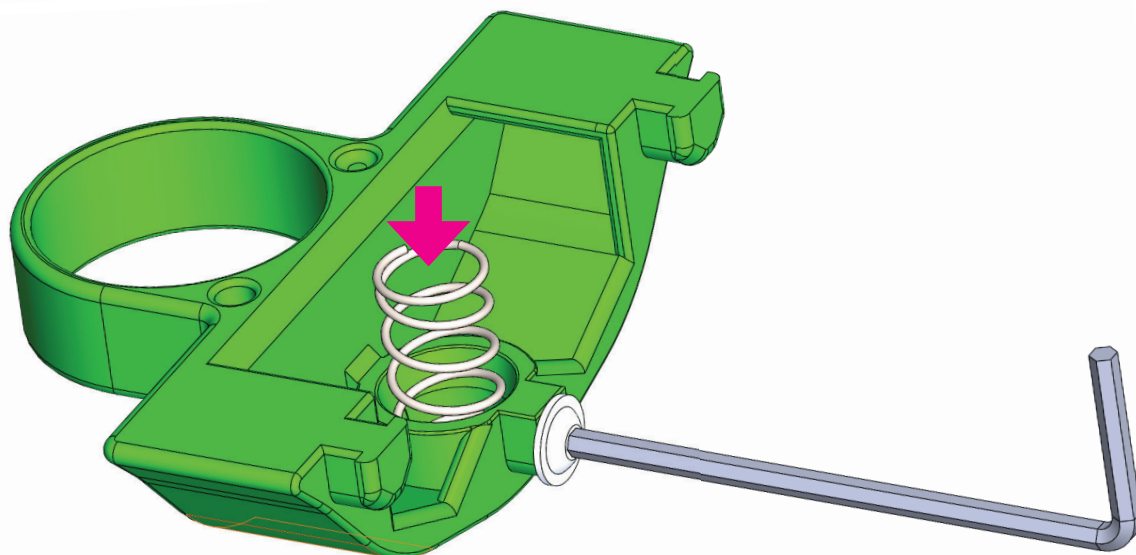
4.1

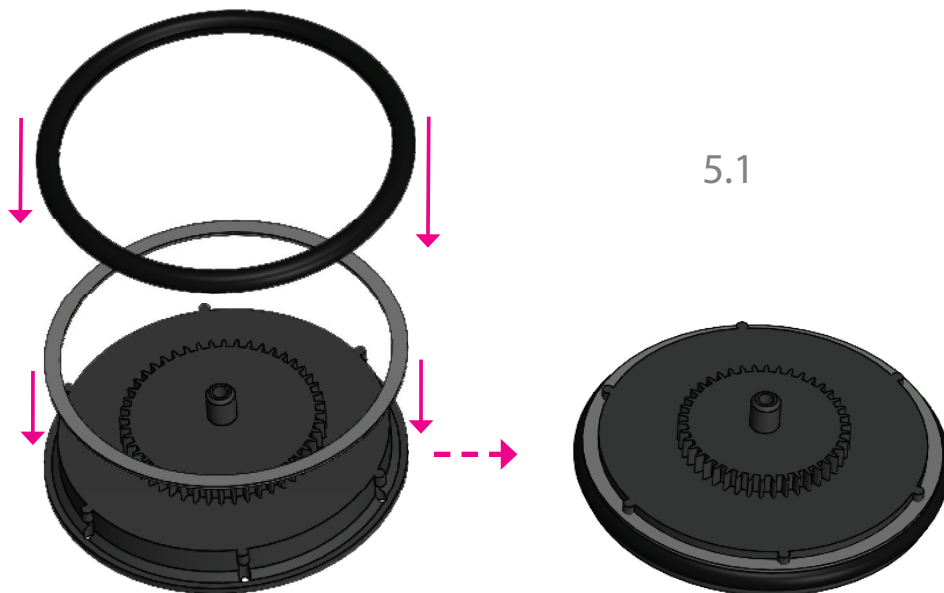


4.2

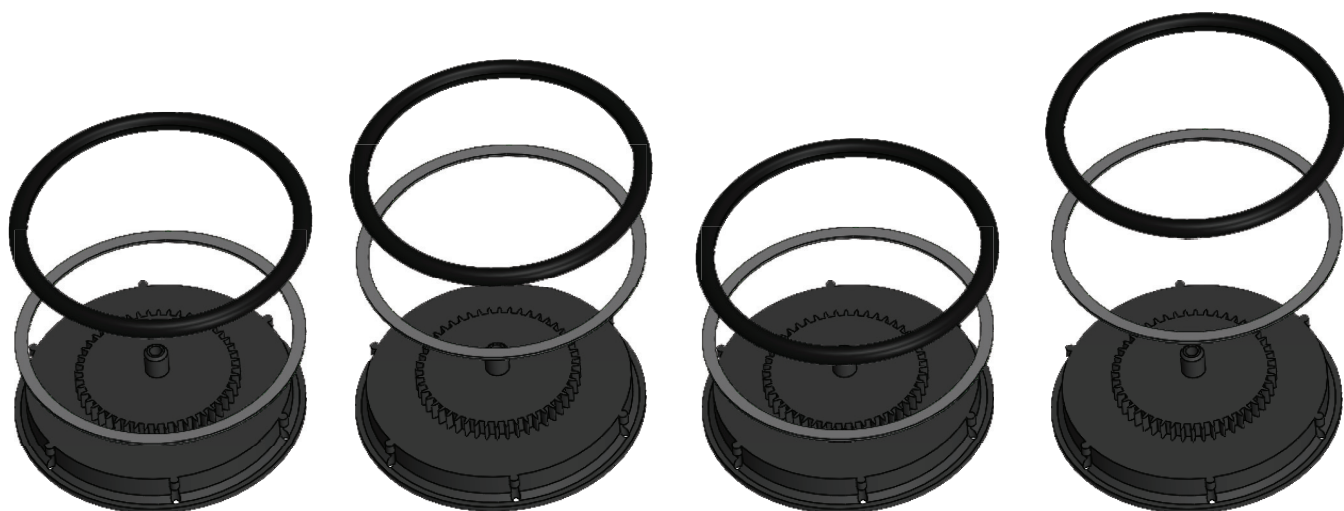


4.3

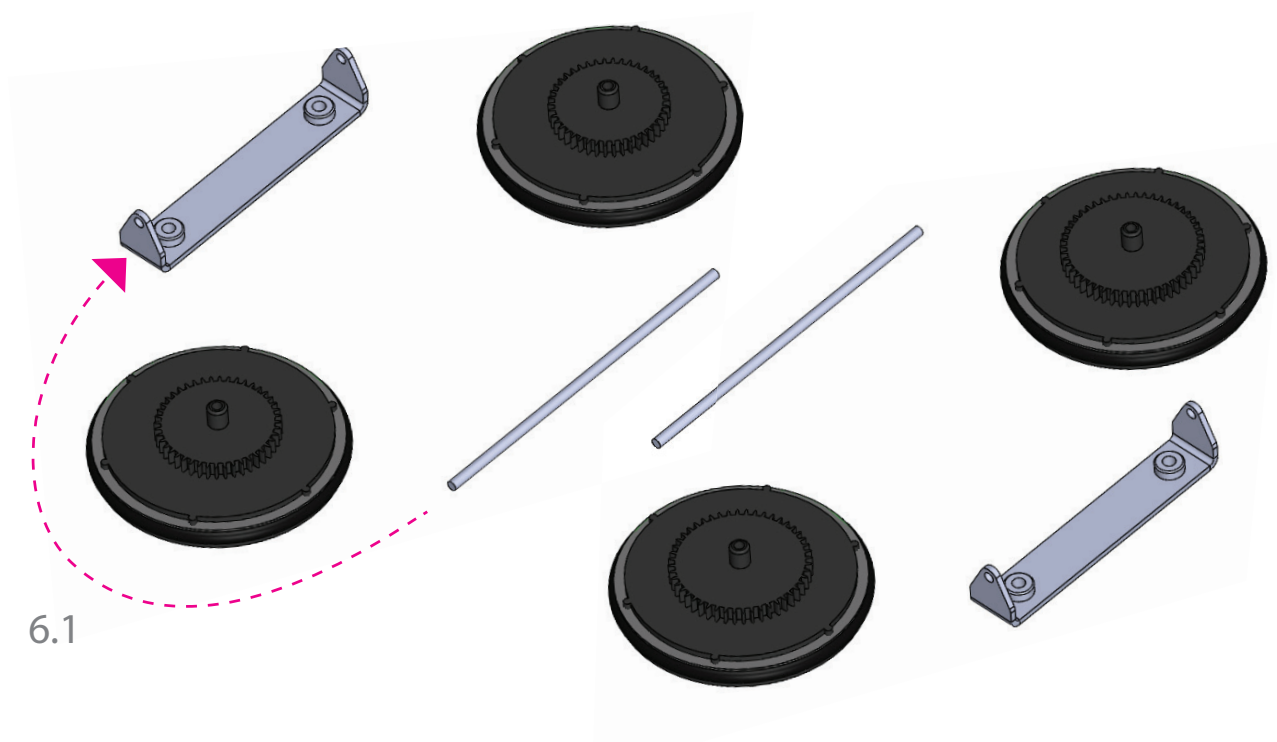




5.1

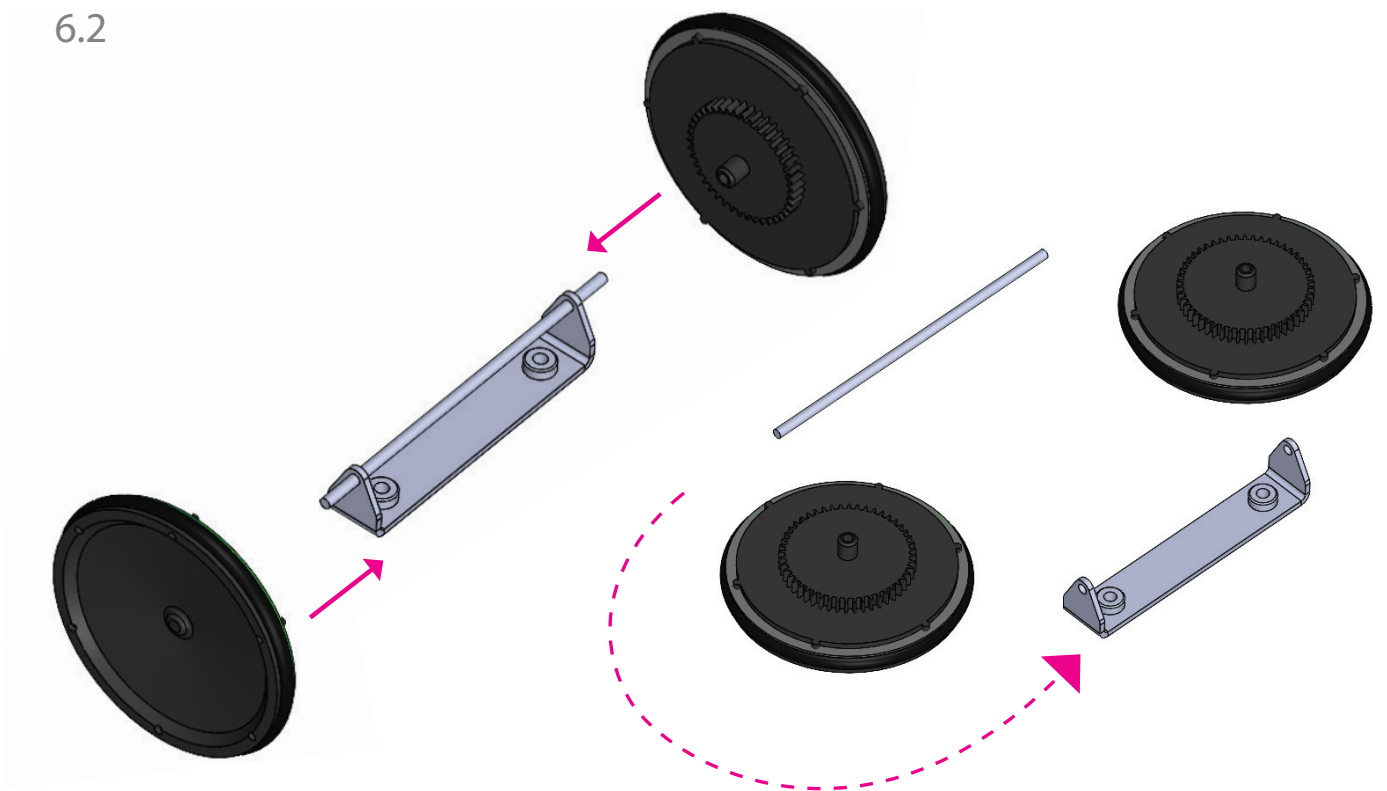


5.2

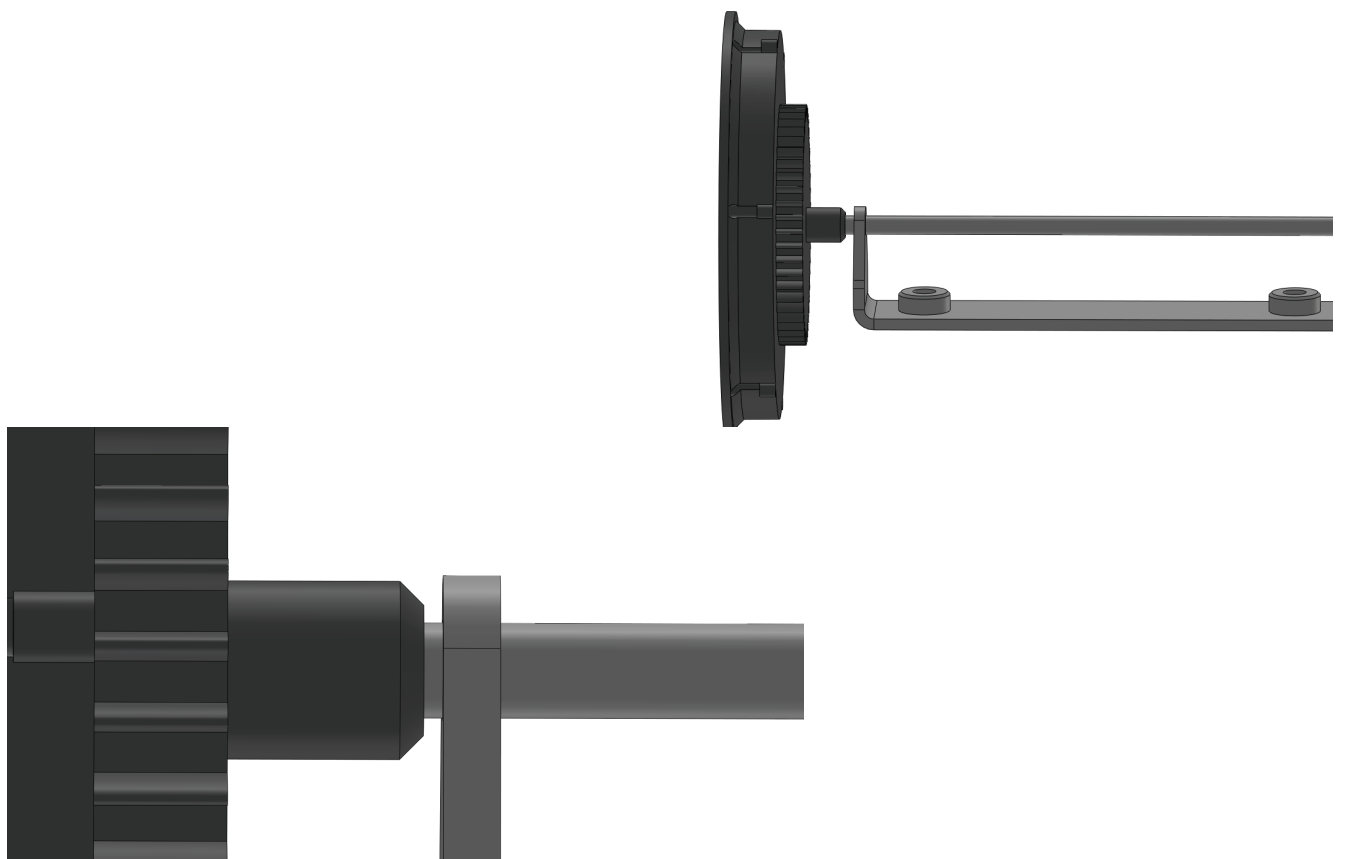


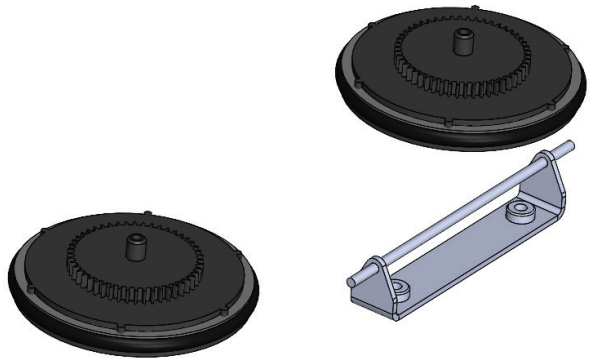
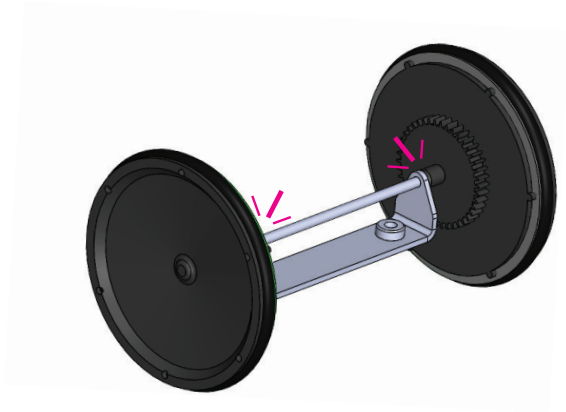
6.1

6.2

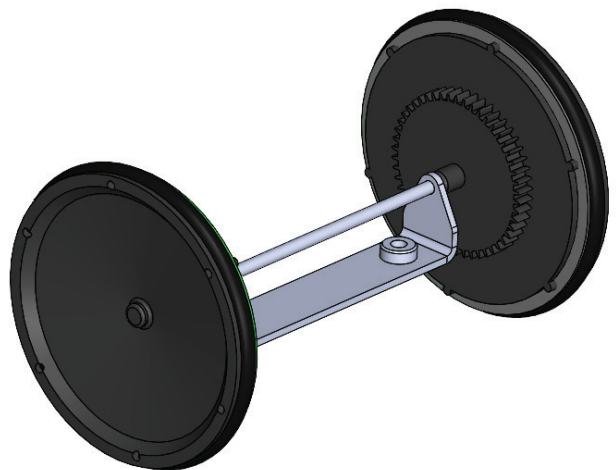
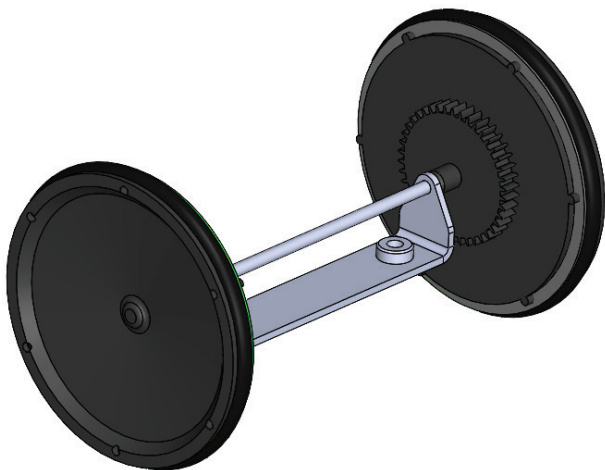


6.3

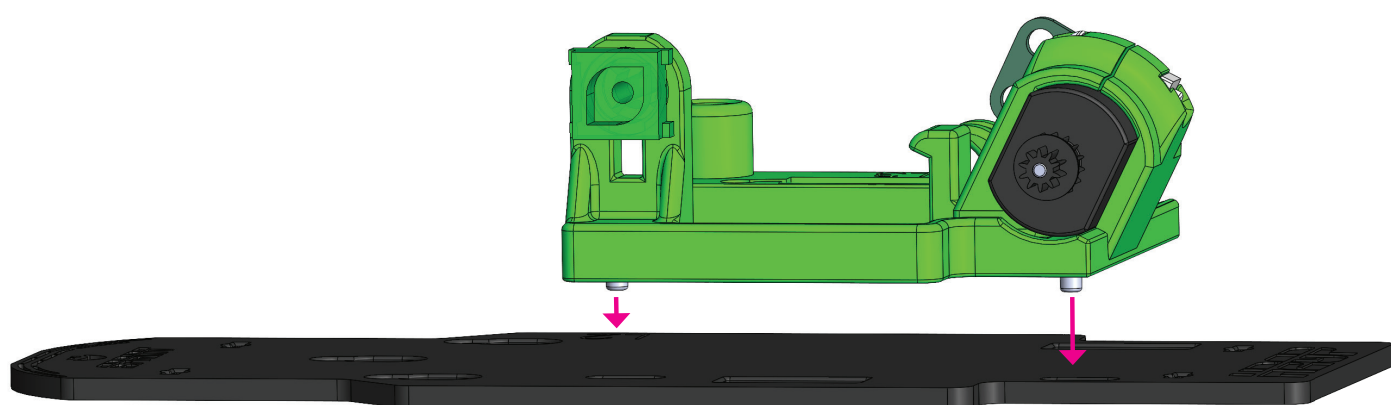
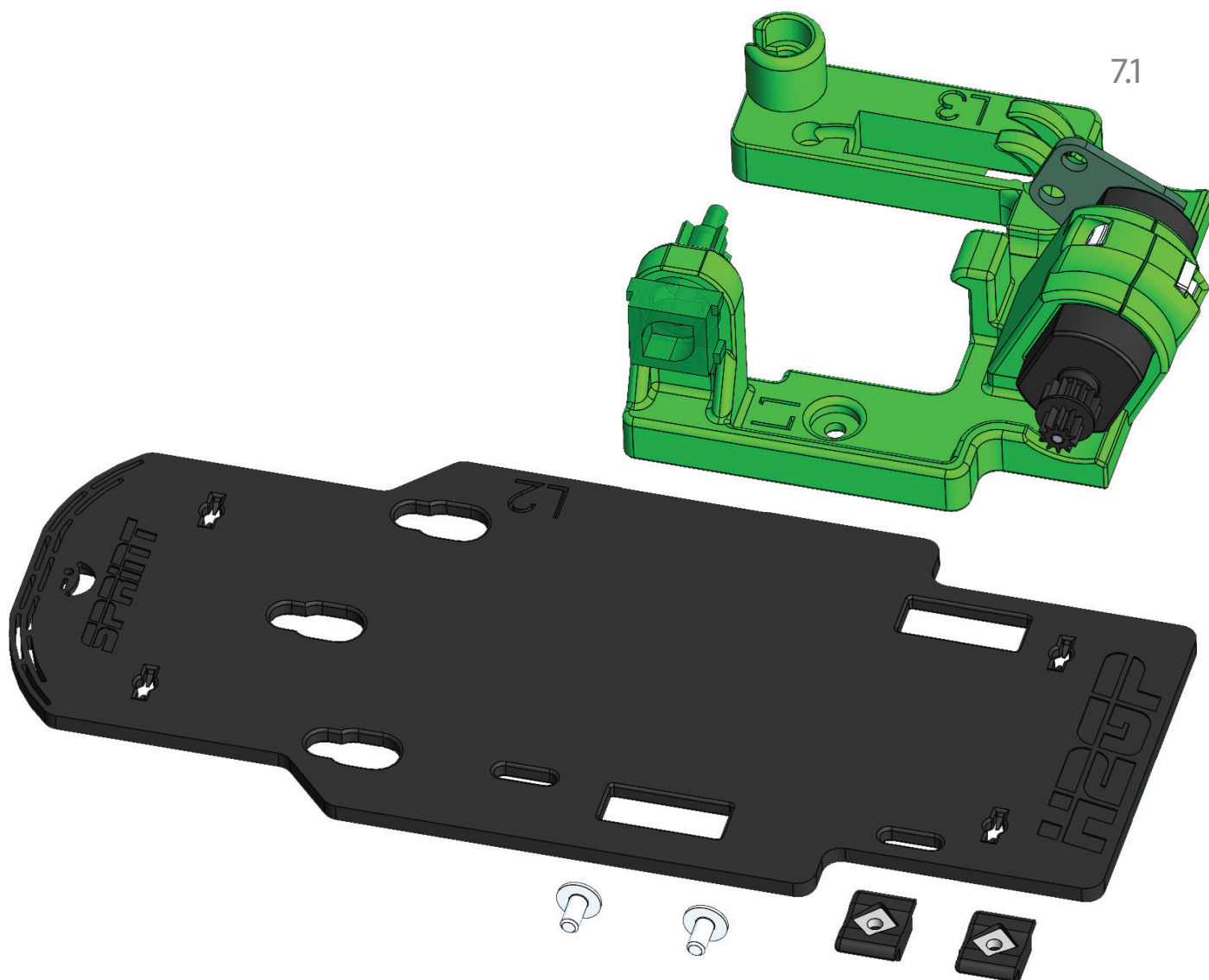




6.4

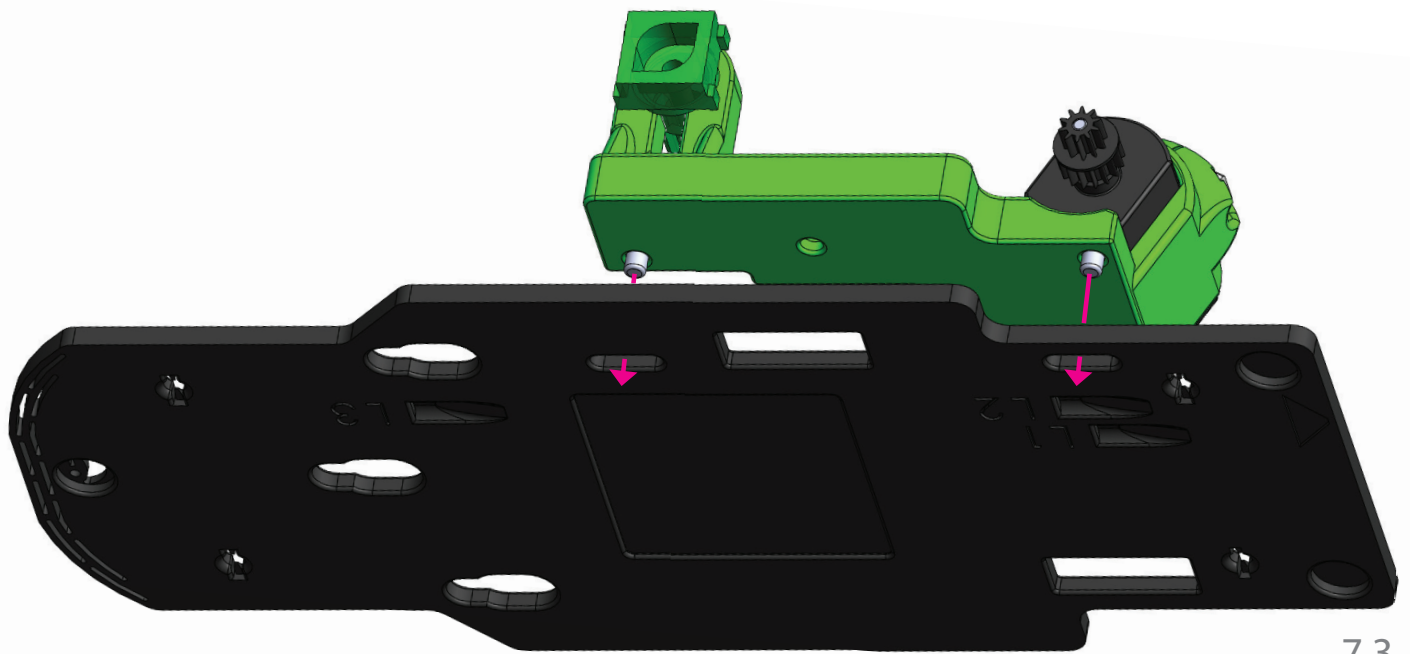




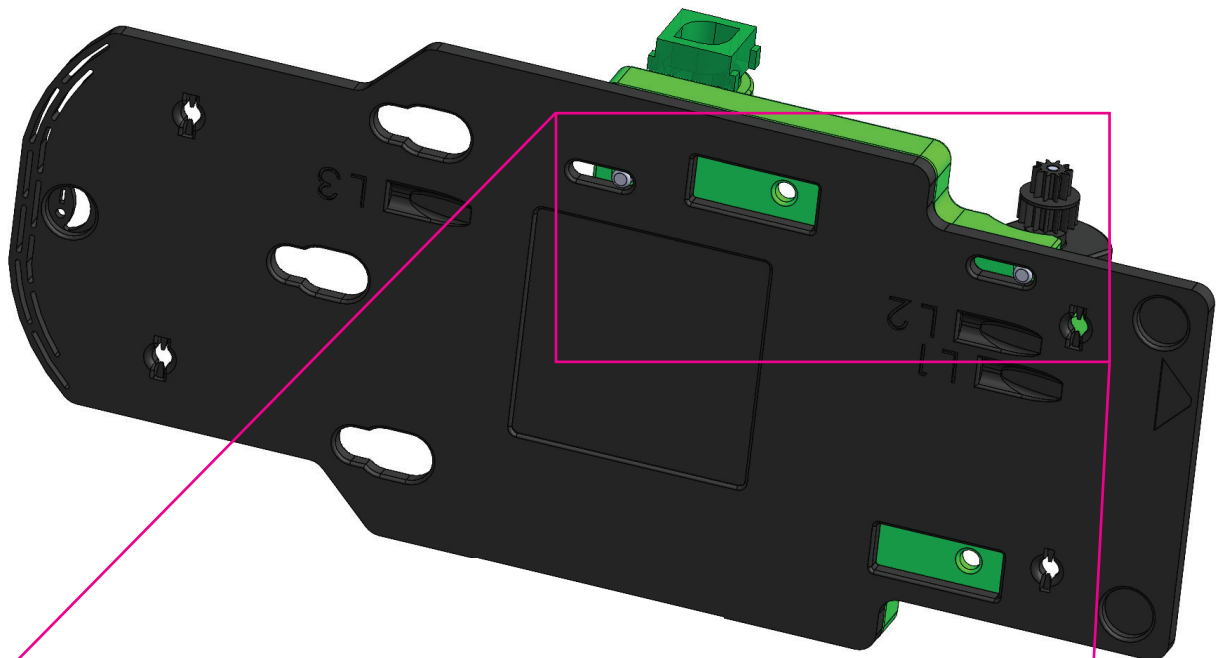


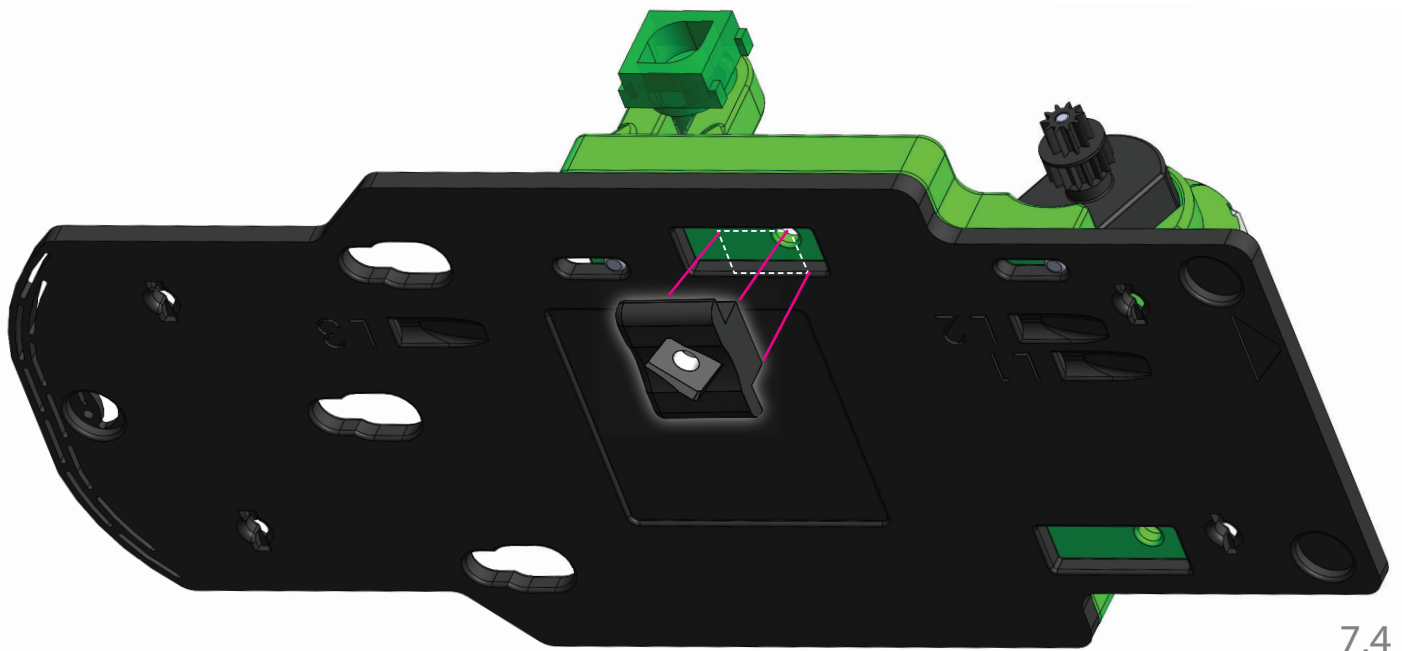
7.1

7.2

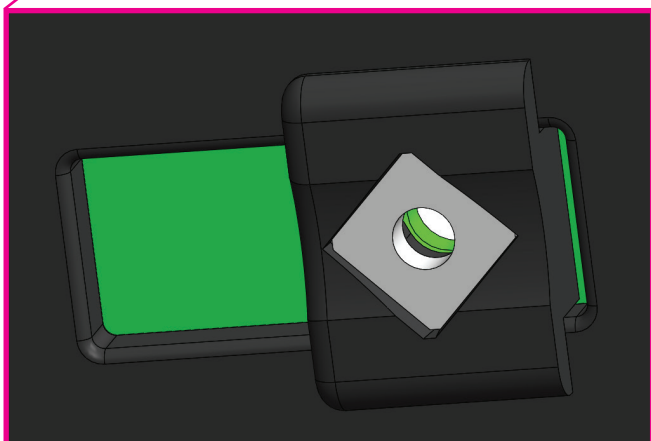
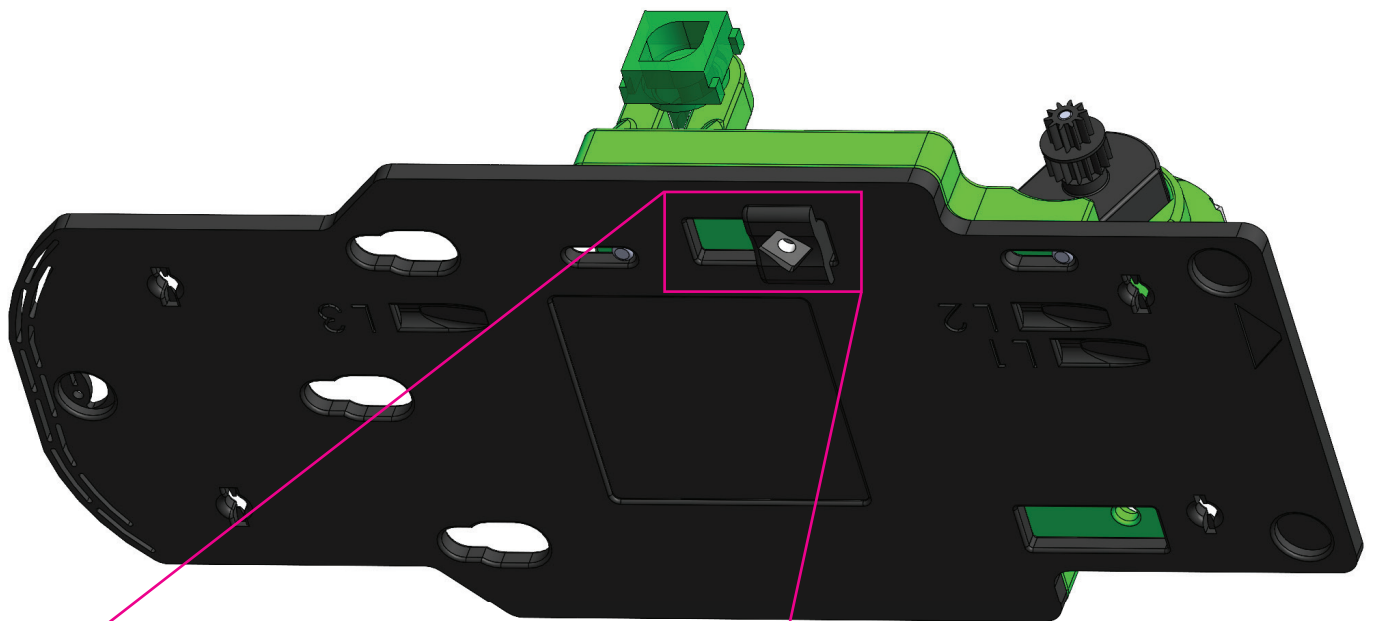


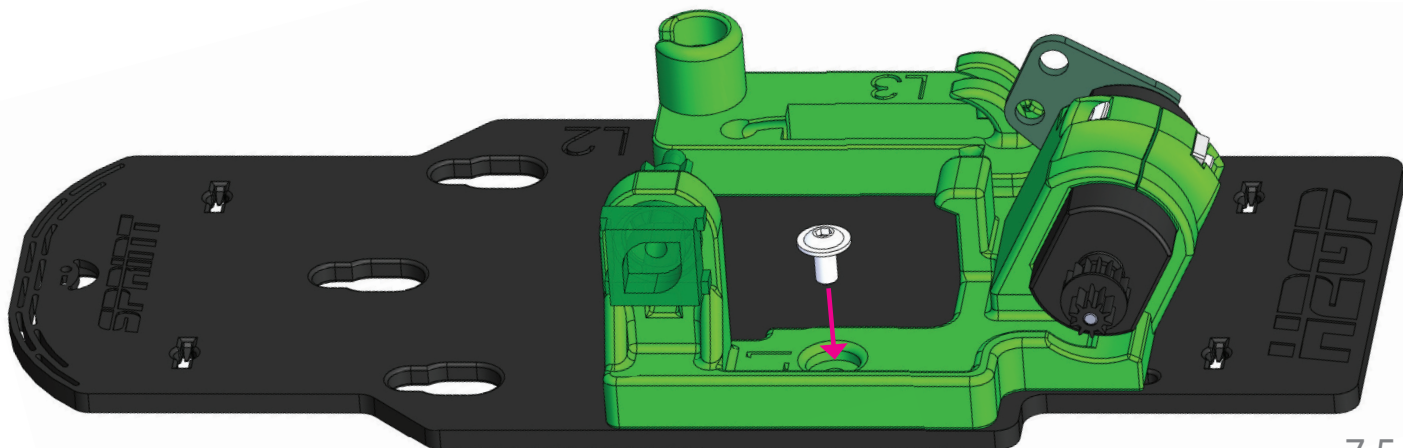
7.3



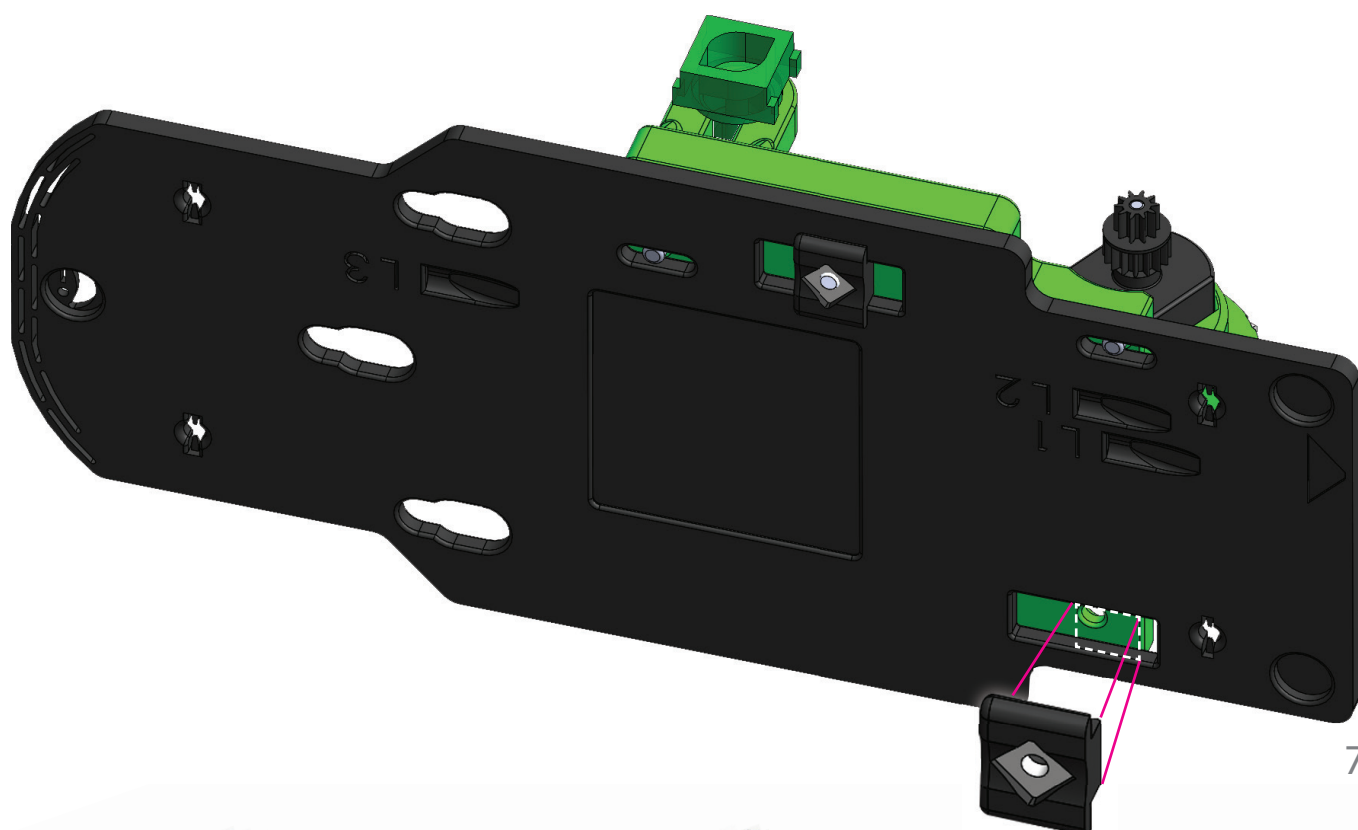


7.4

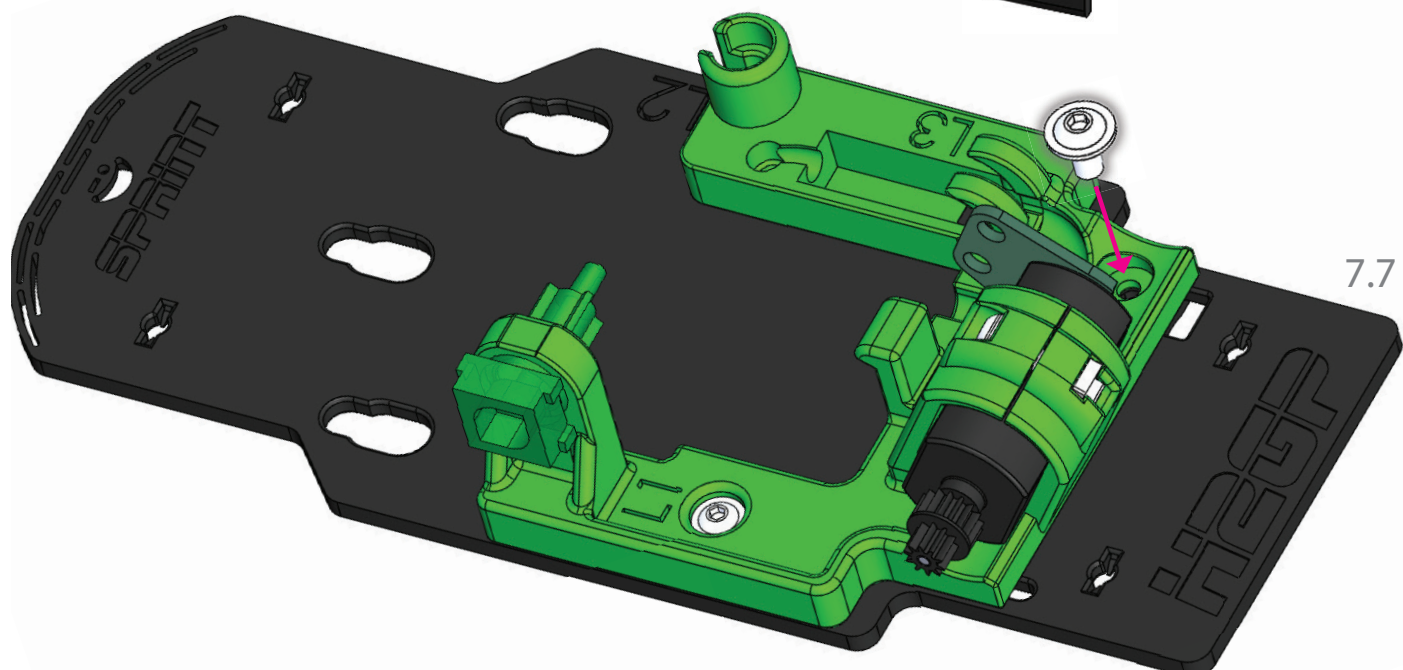




7.5

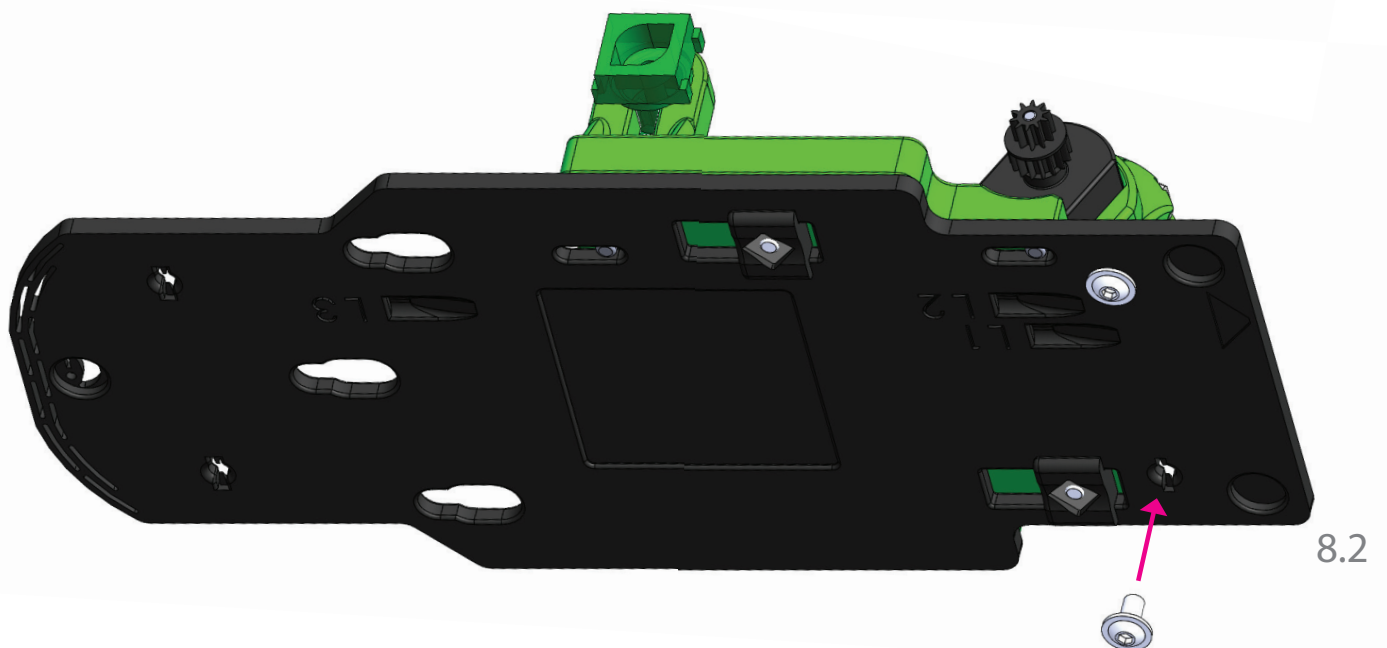
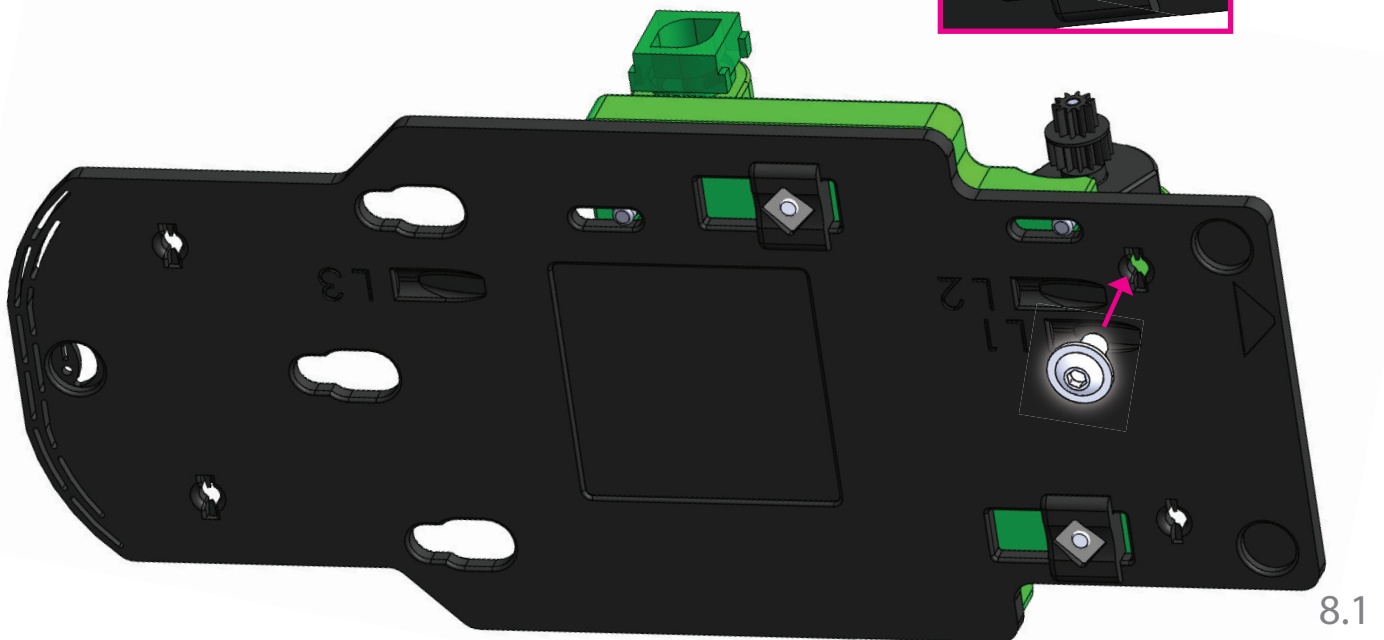
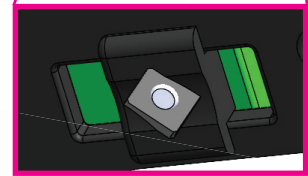
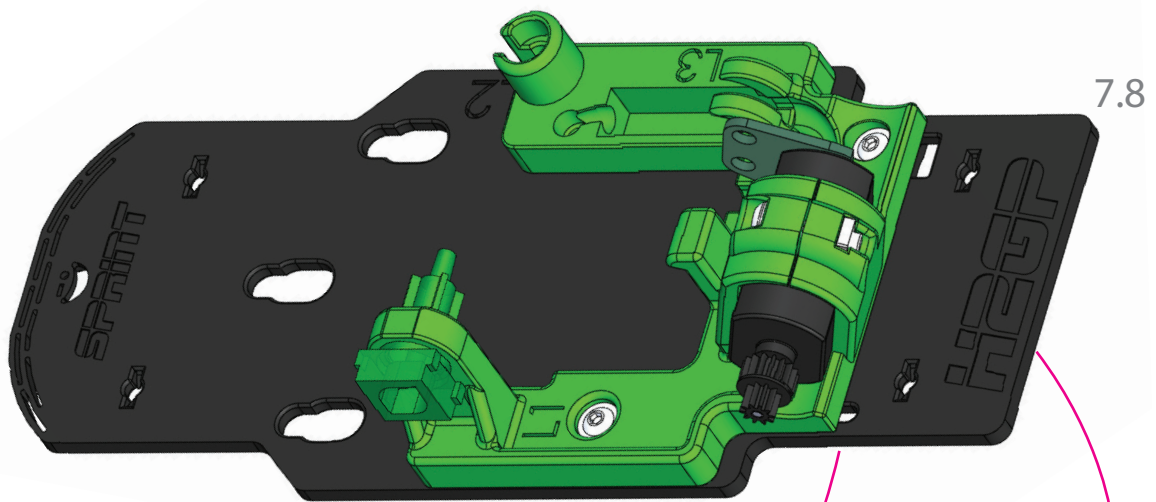


7.6

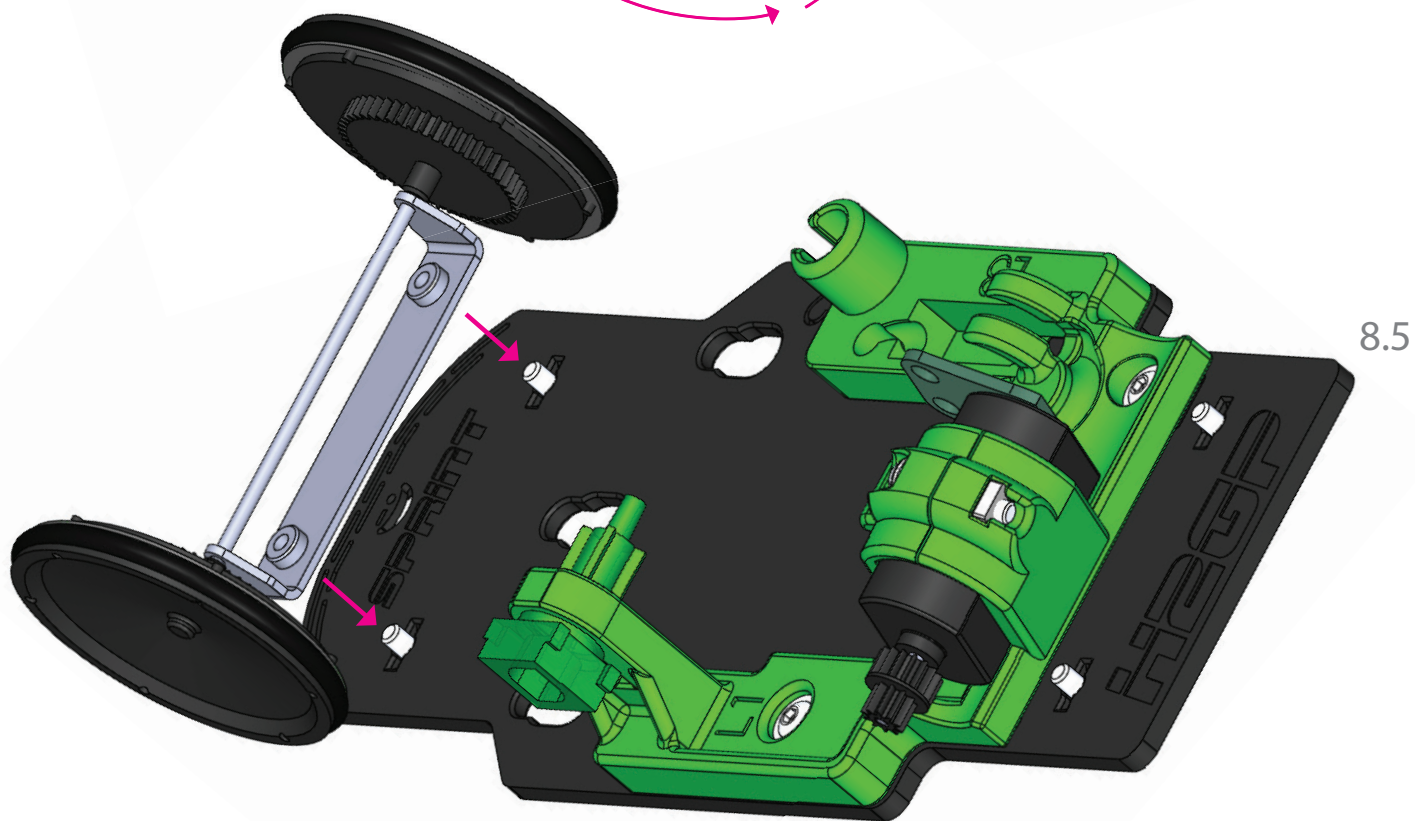
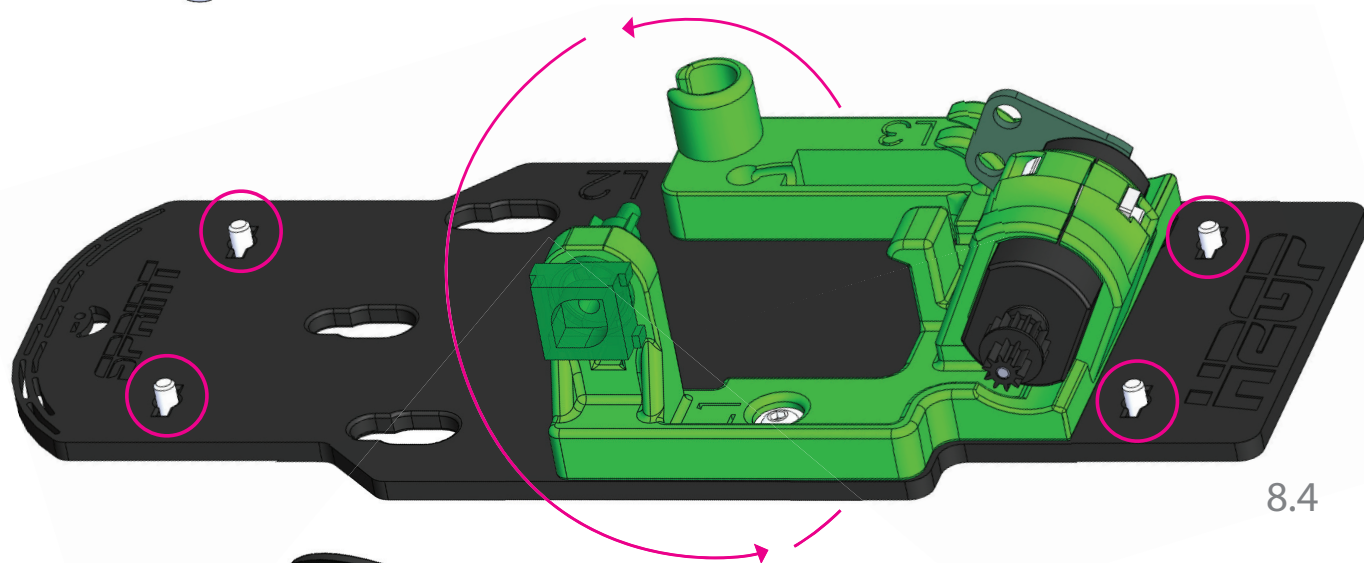
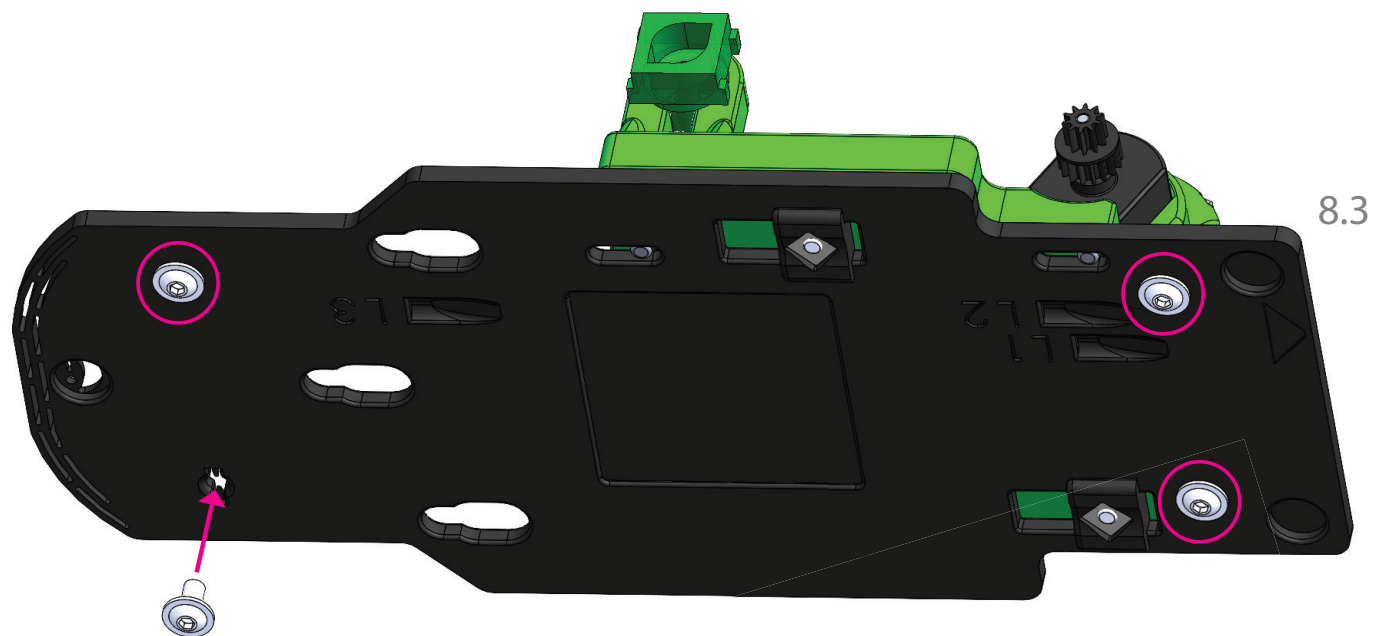


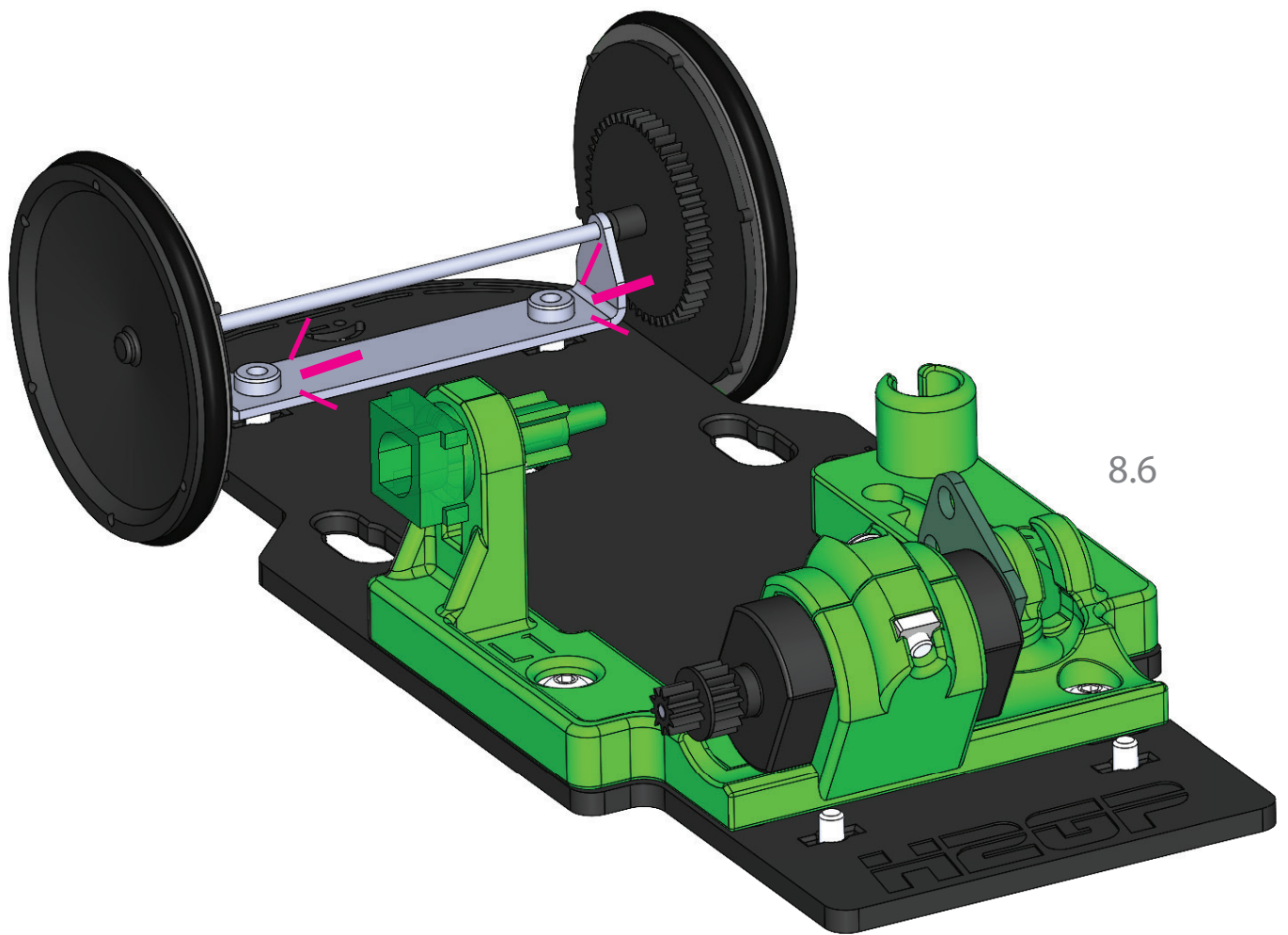
7.7



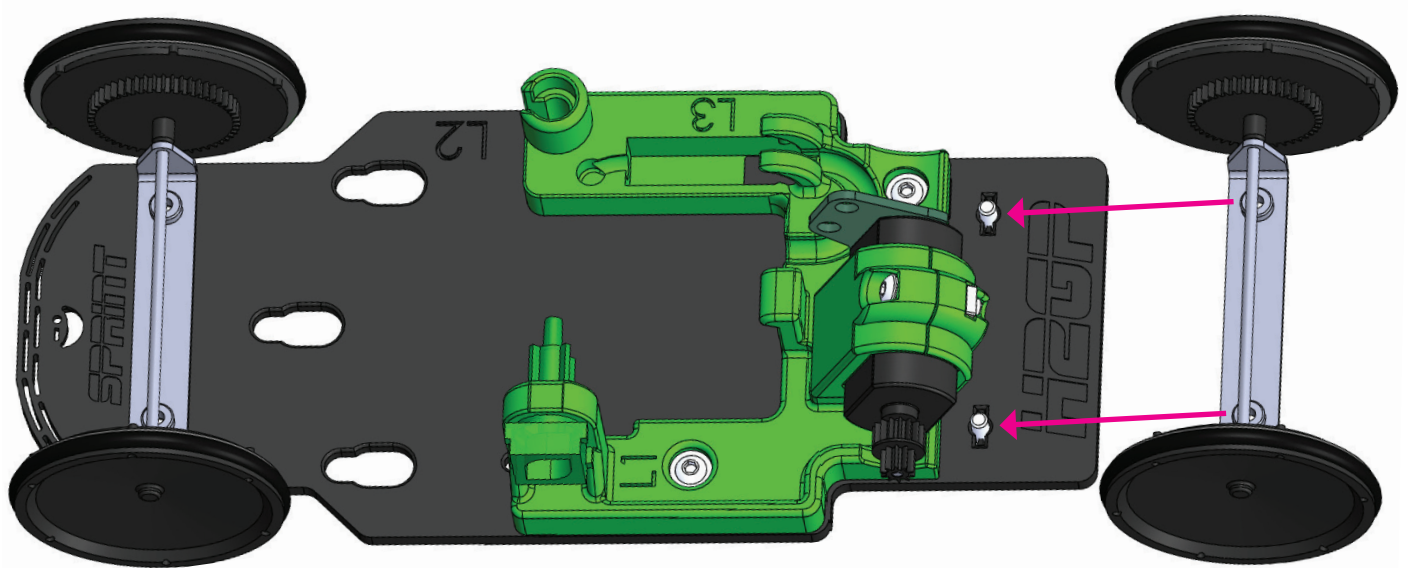




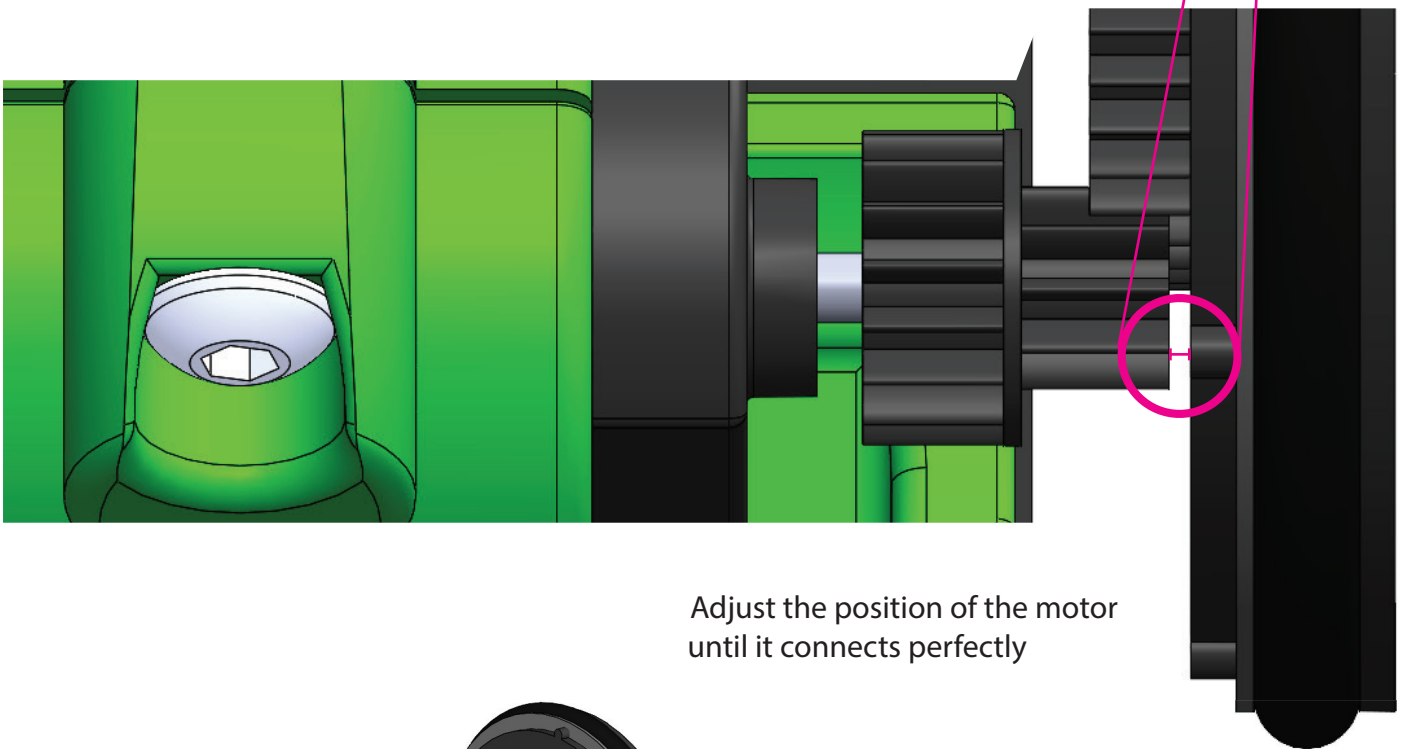
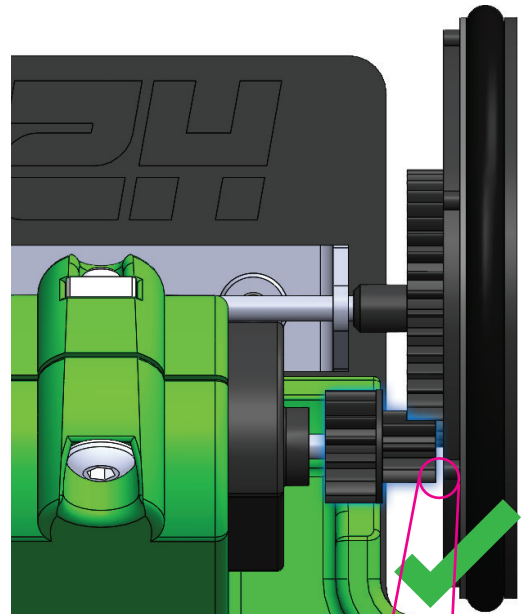
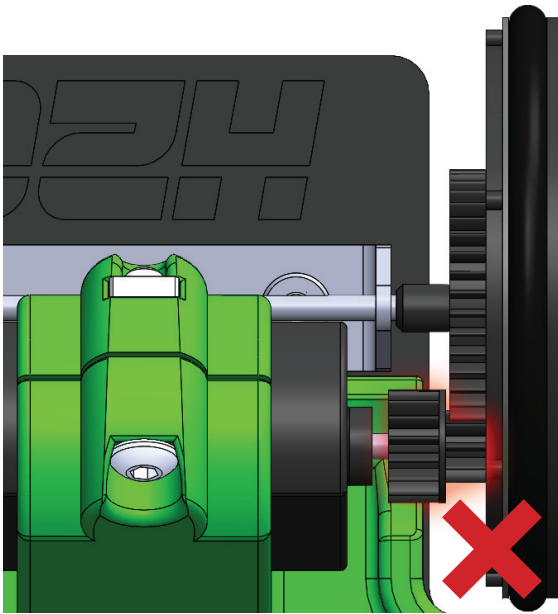




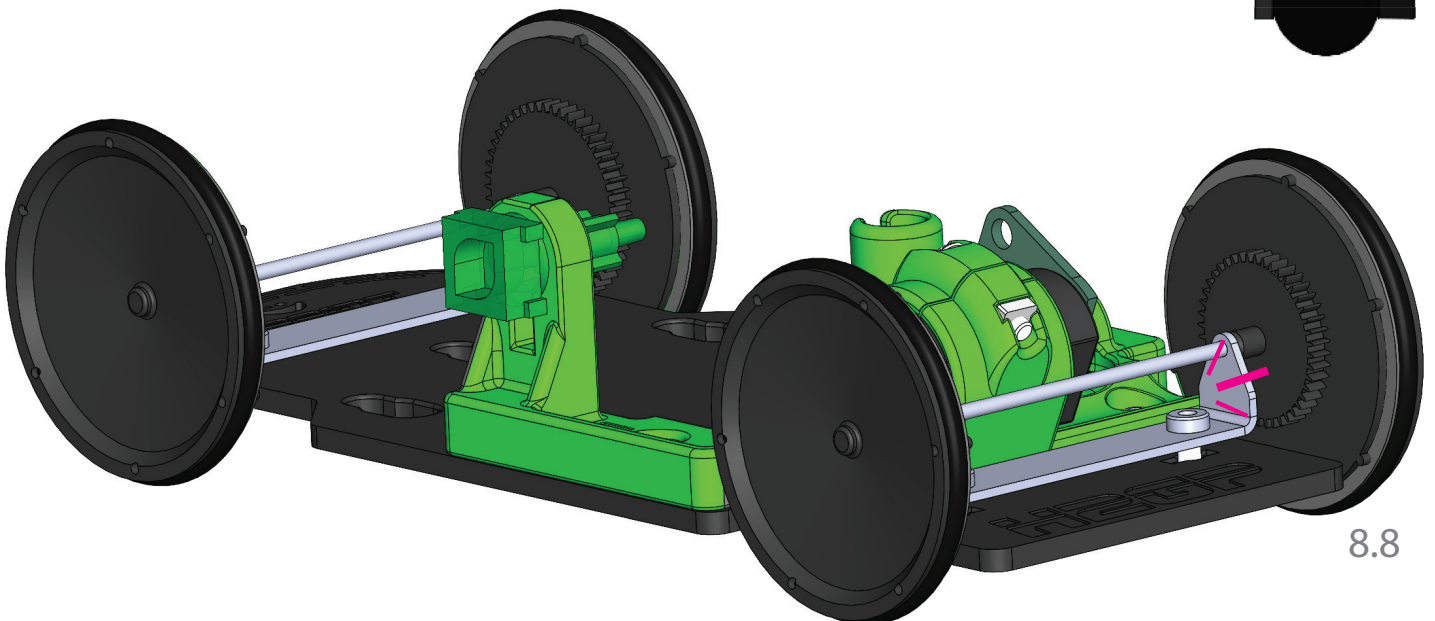
8.6



8.7

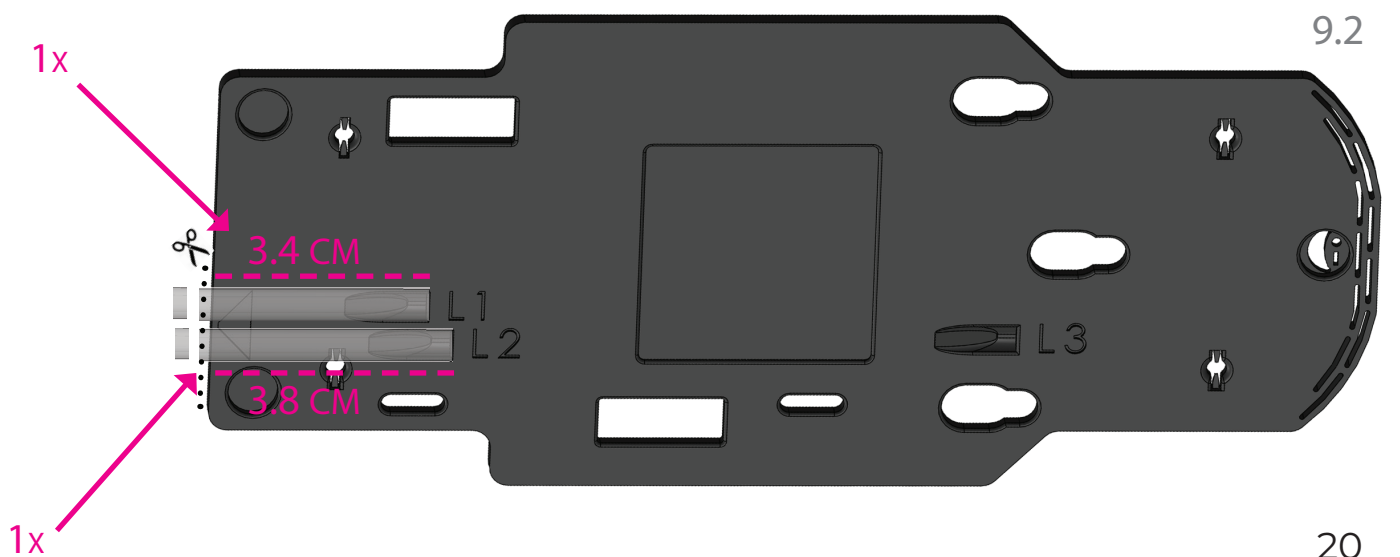
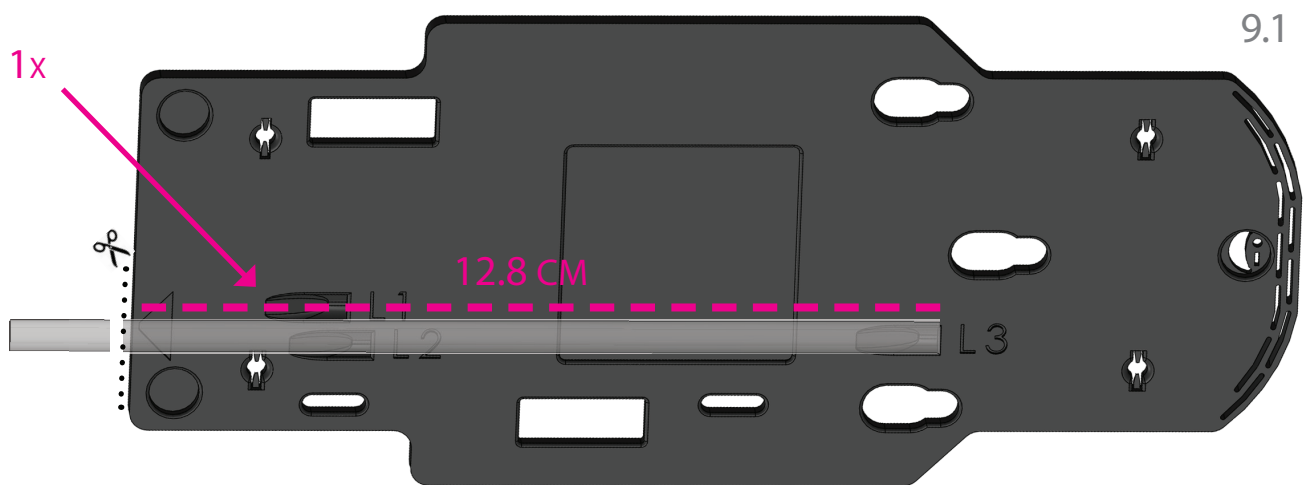
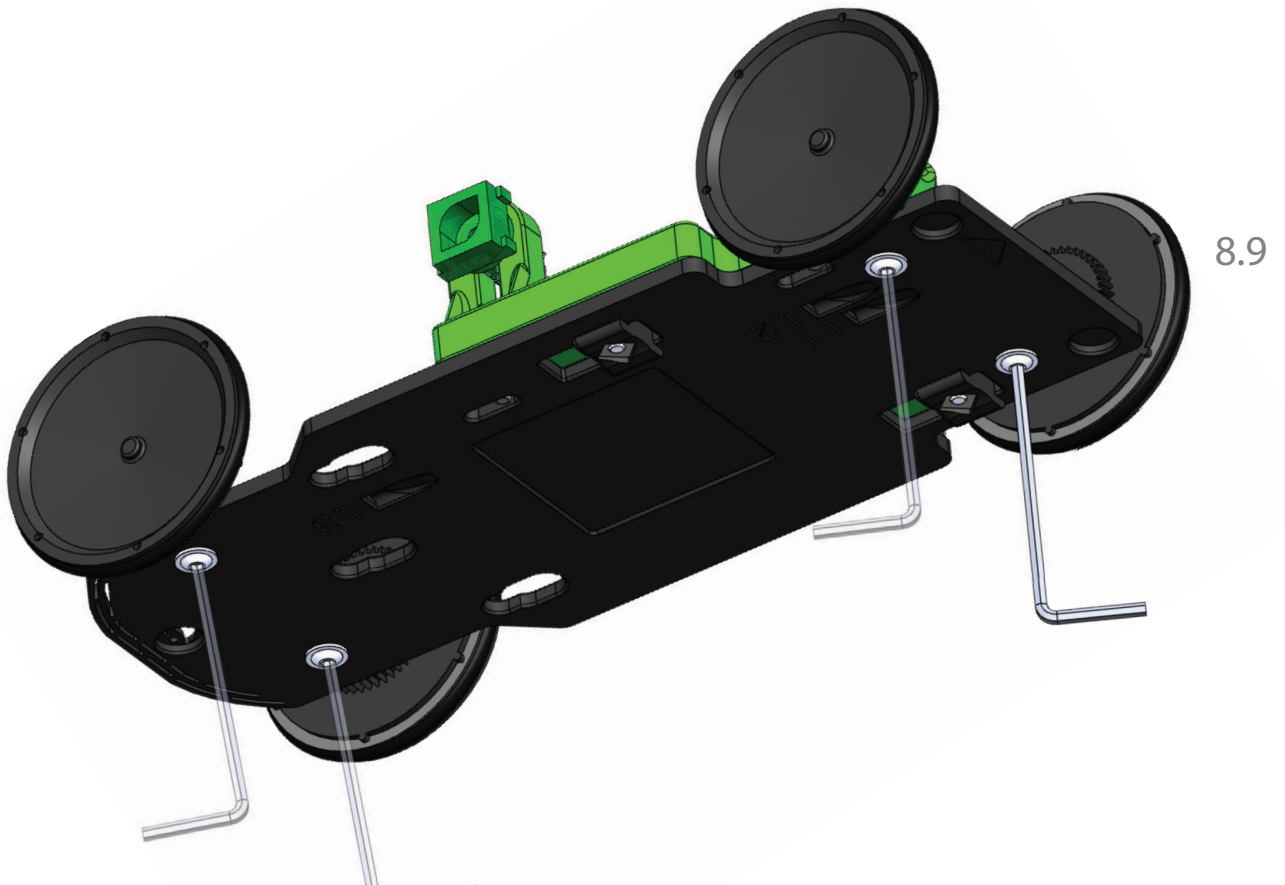


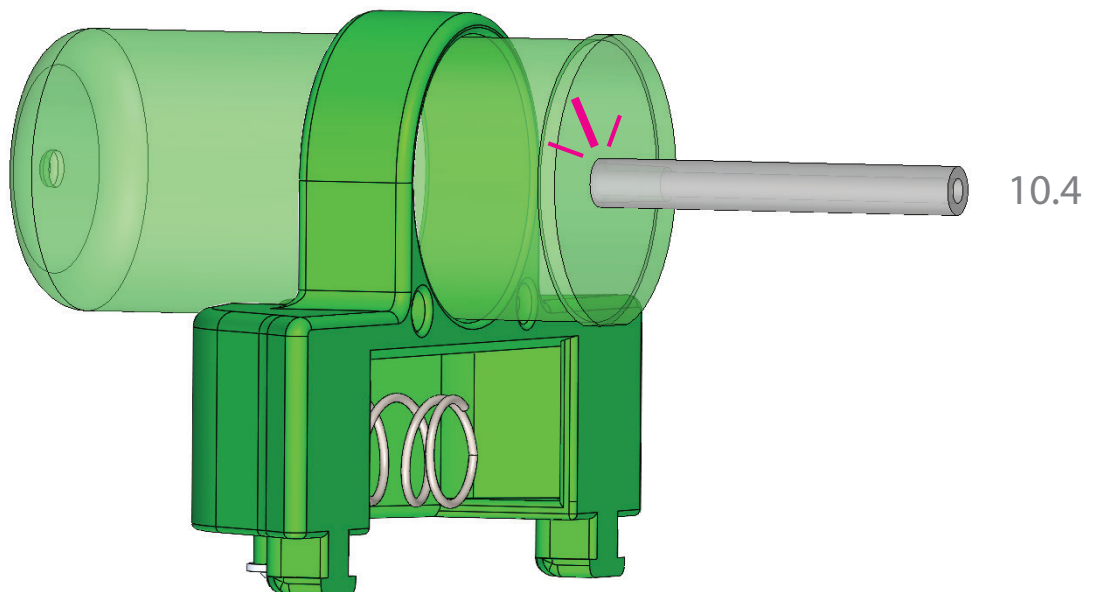
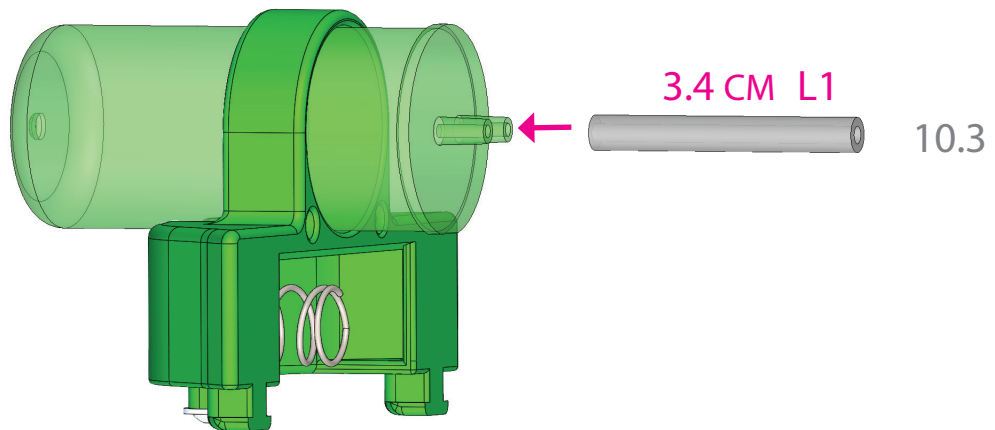
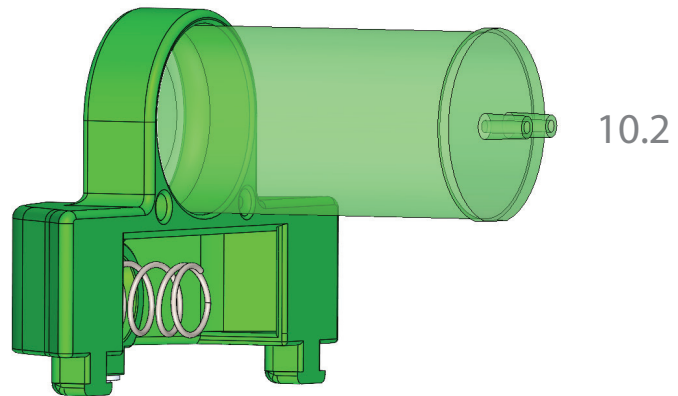
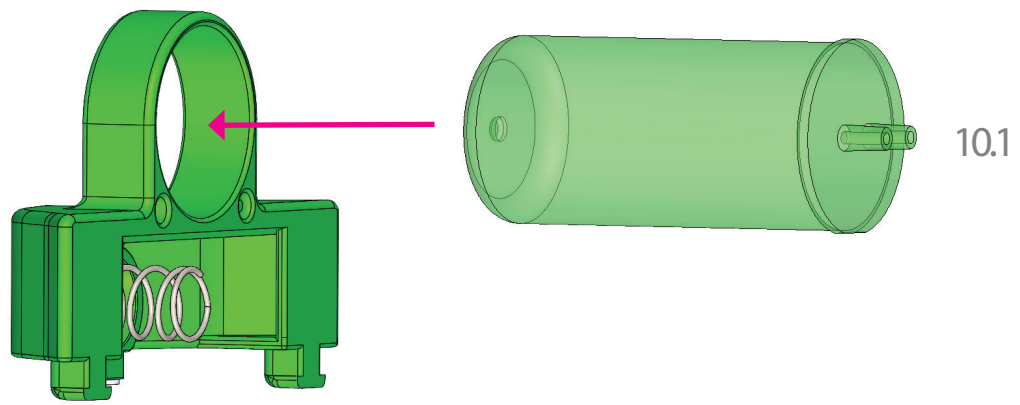
Adjust the position of the motor until it connects perfectly



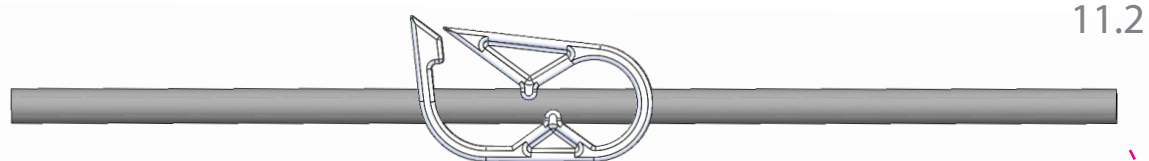
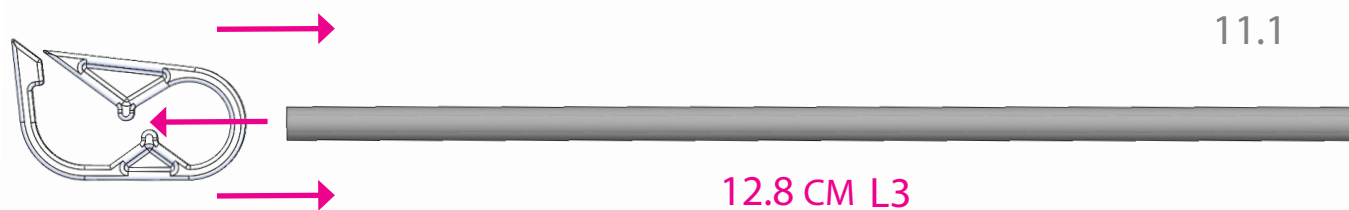
8.8



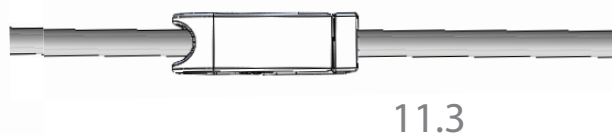
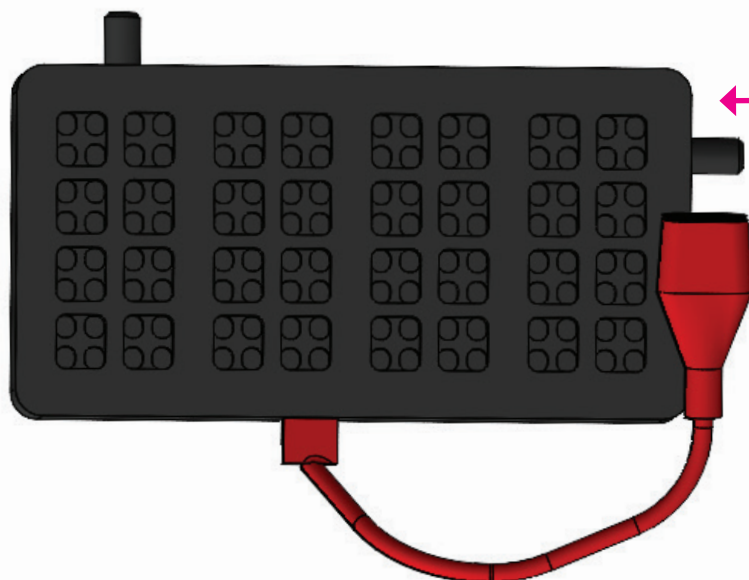
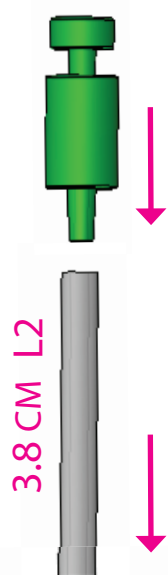




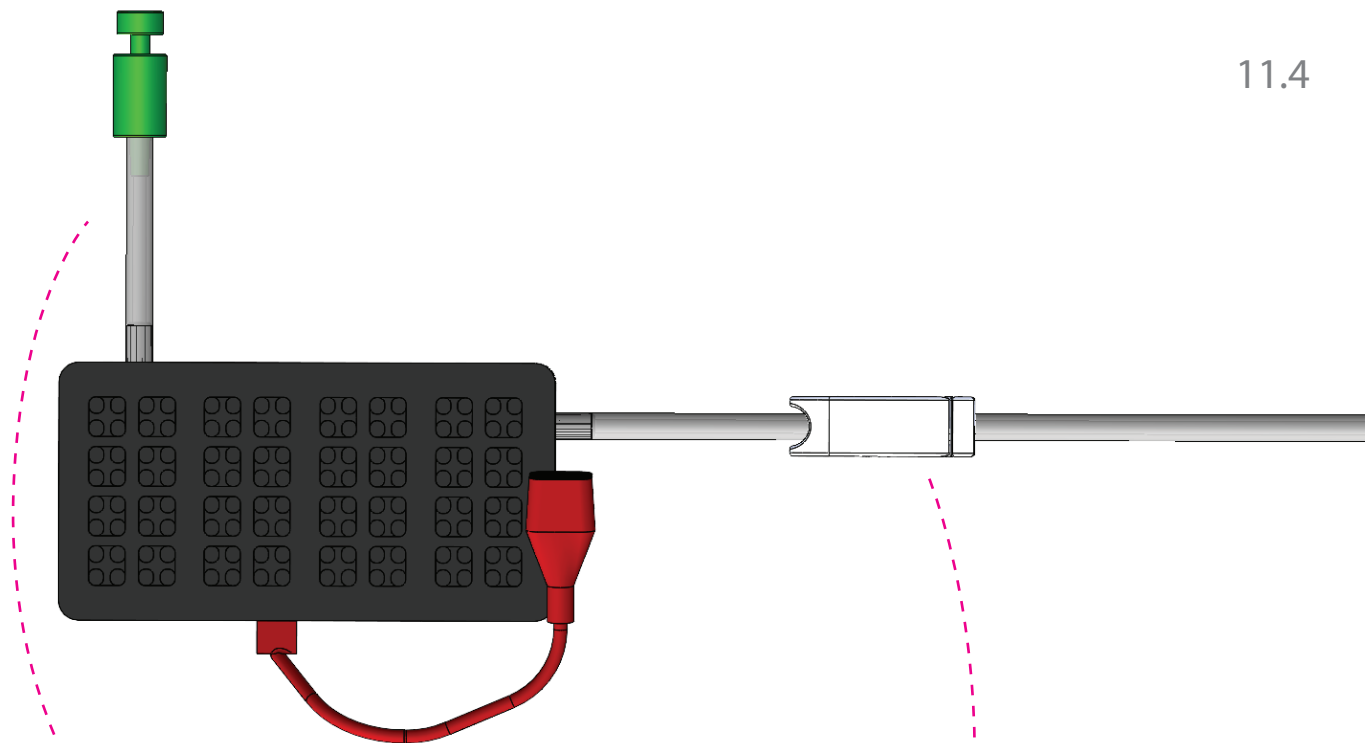




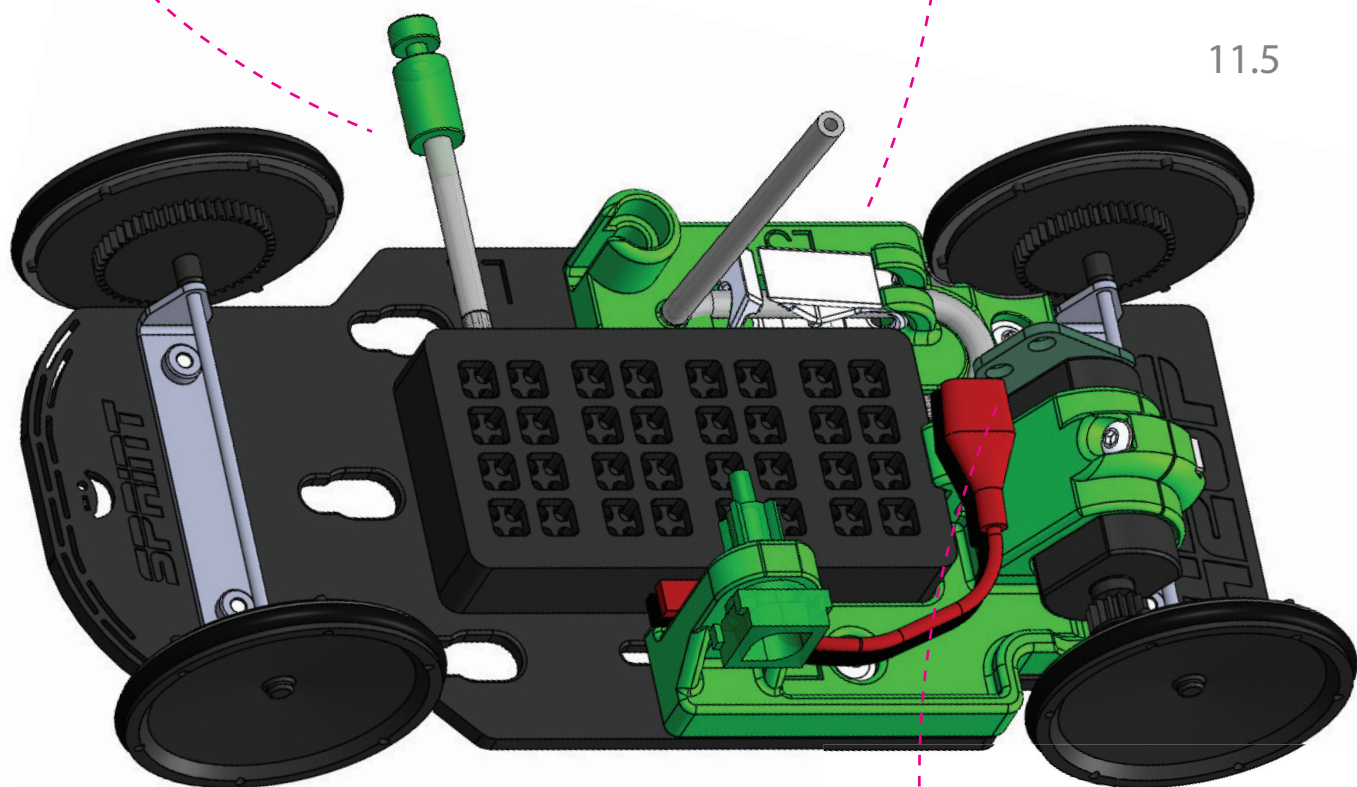
Connect this end to the fuel cell.



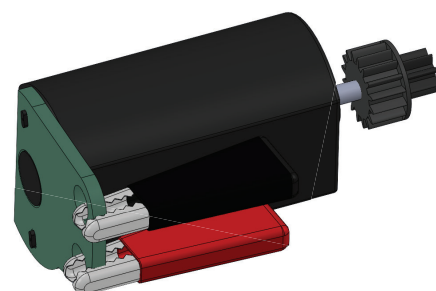
11.4

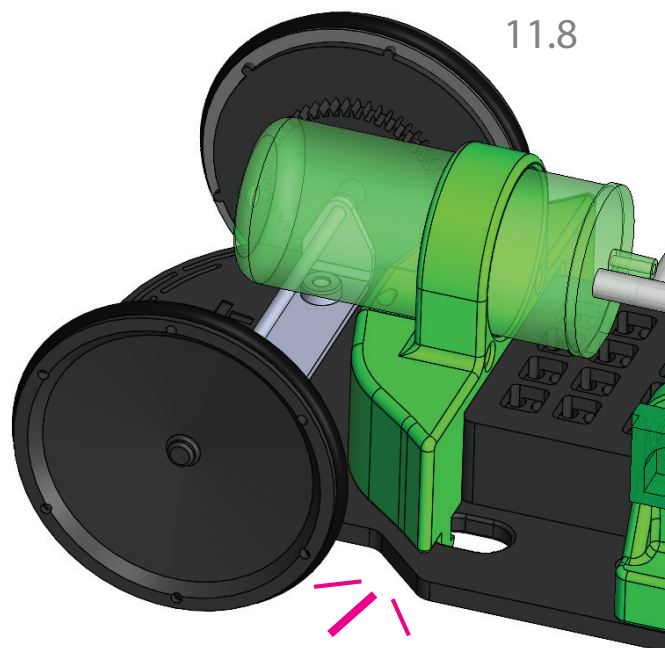
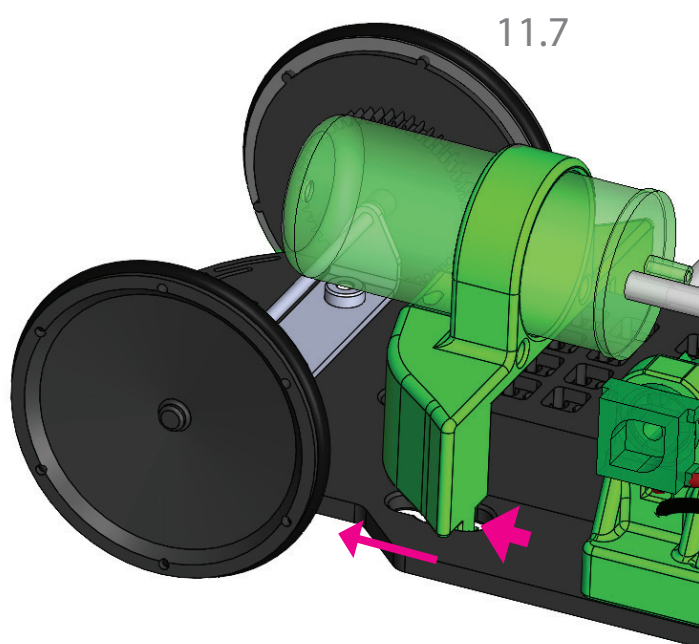
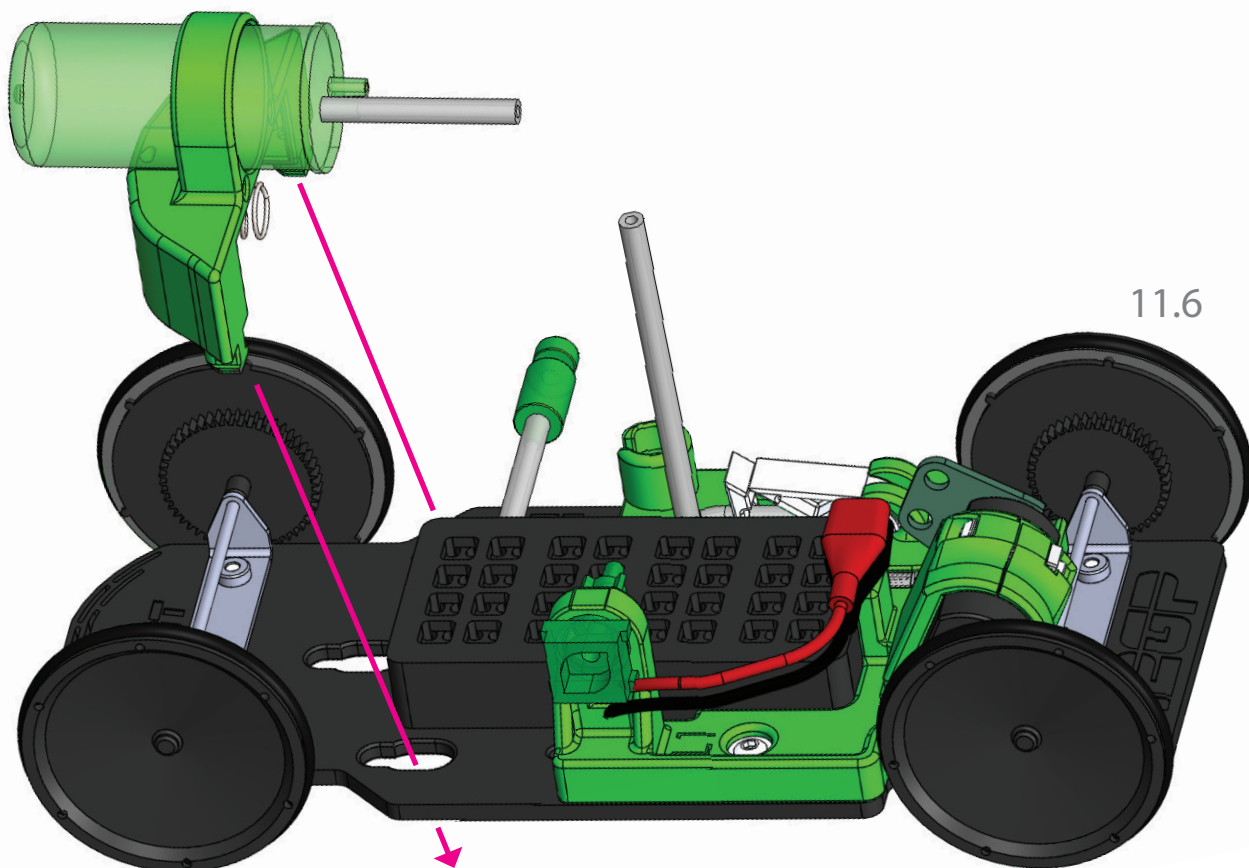


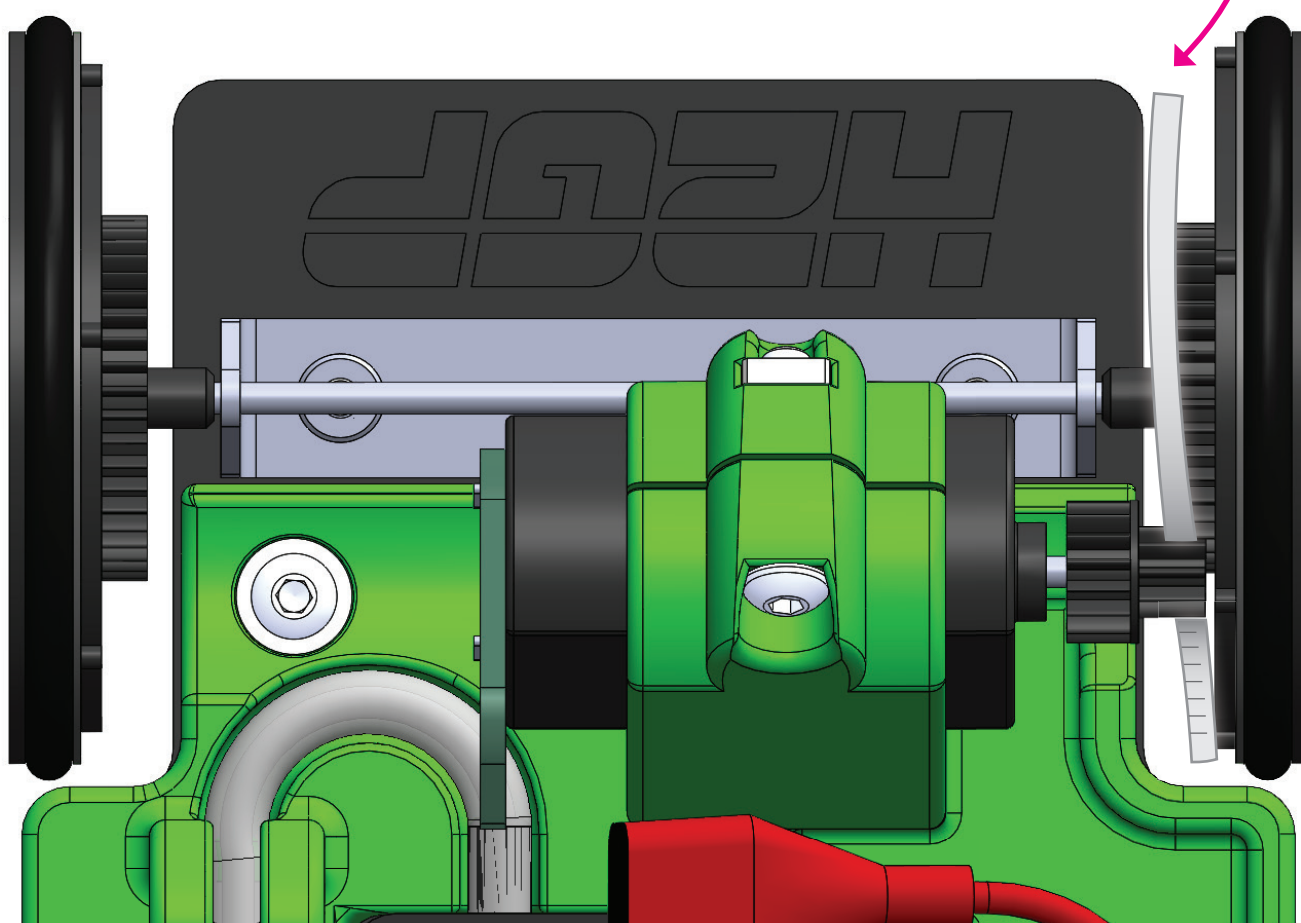
11.5



If the car is moving in the opposite direction, please swap the red and black alligator clips on the motor.

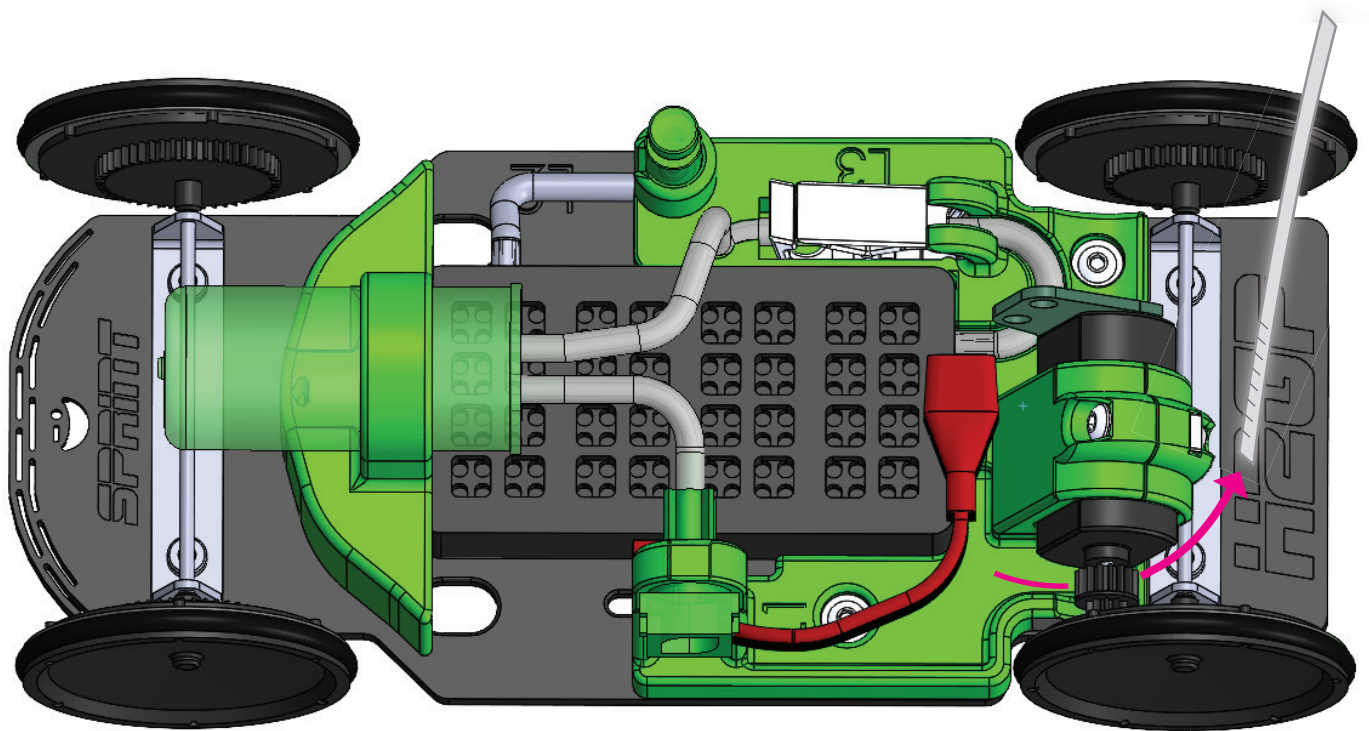
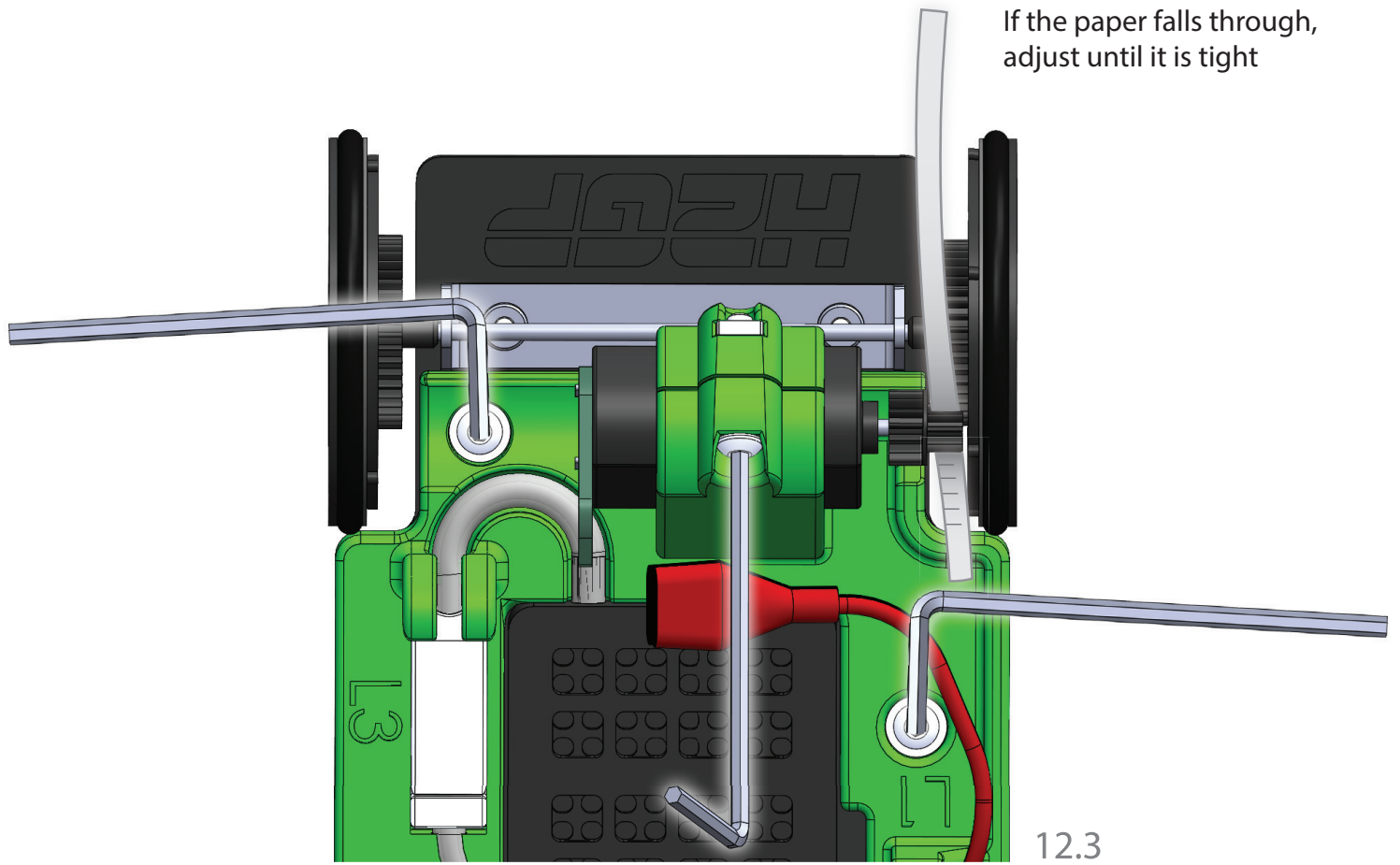




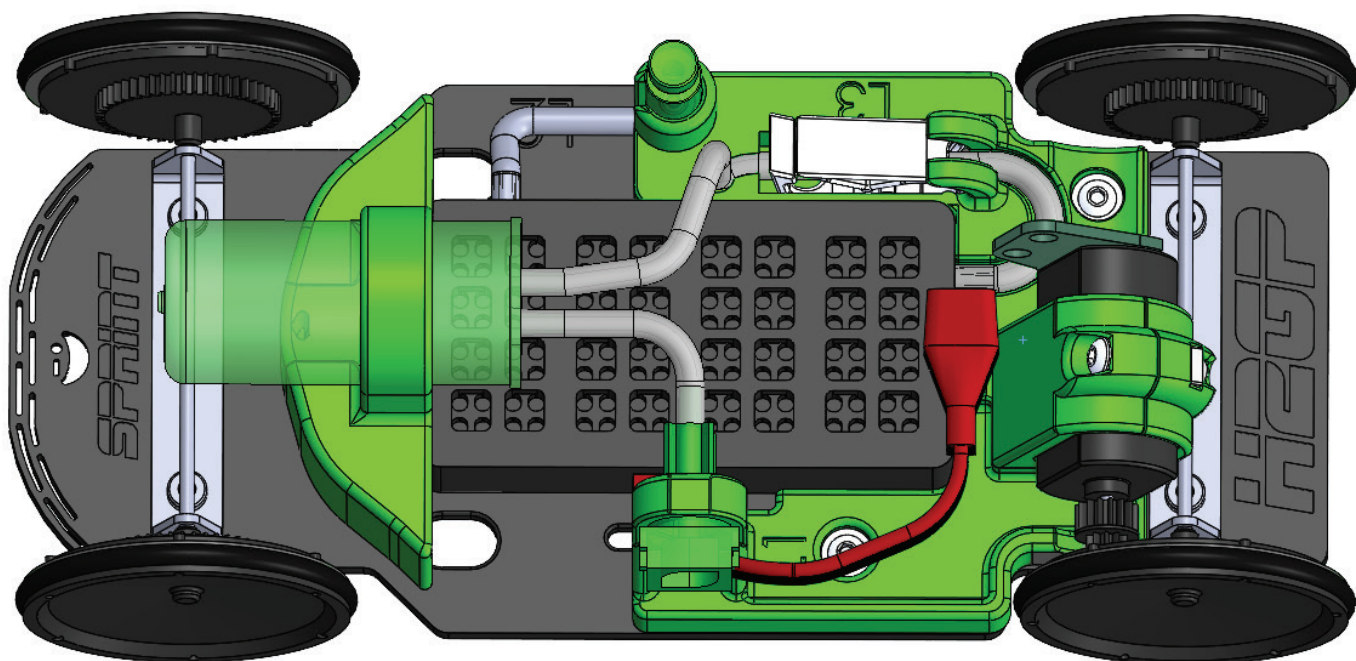


12.2

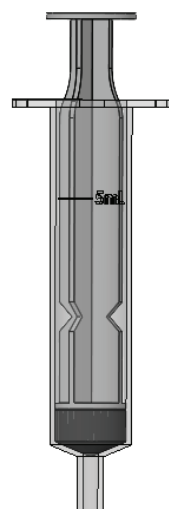
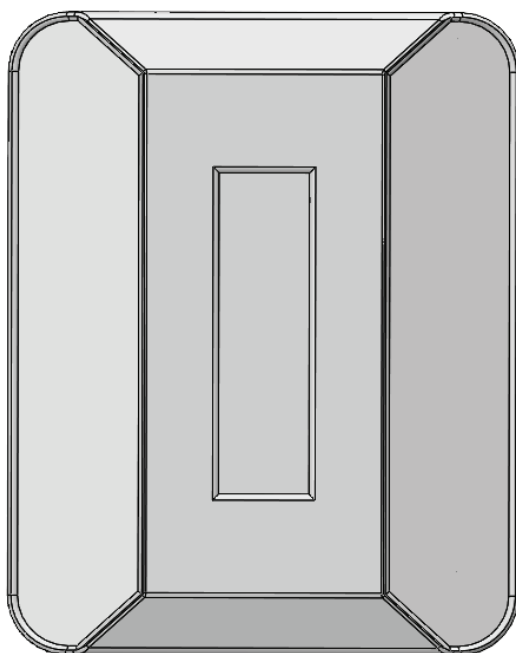




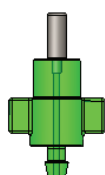




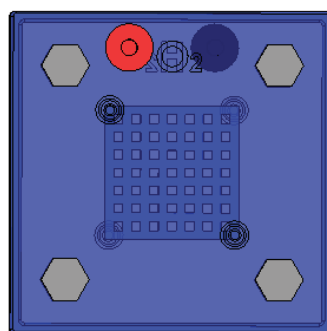
12 CM  $\pm$

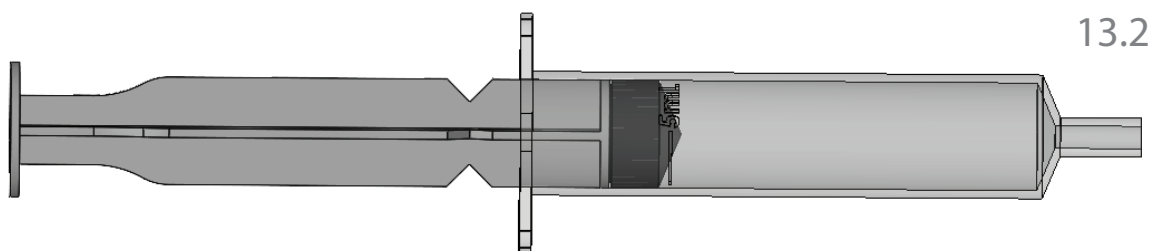


13.1

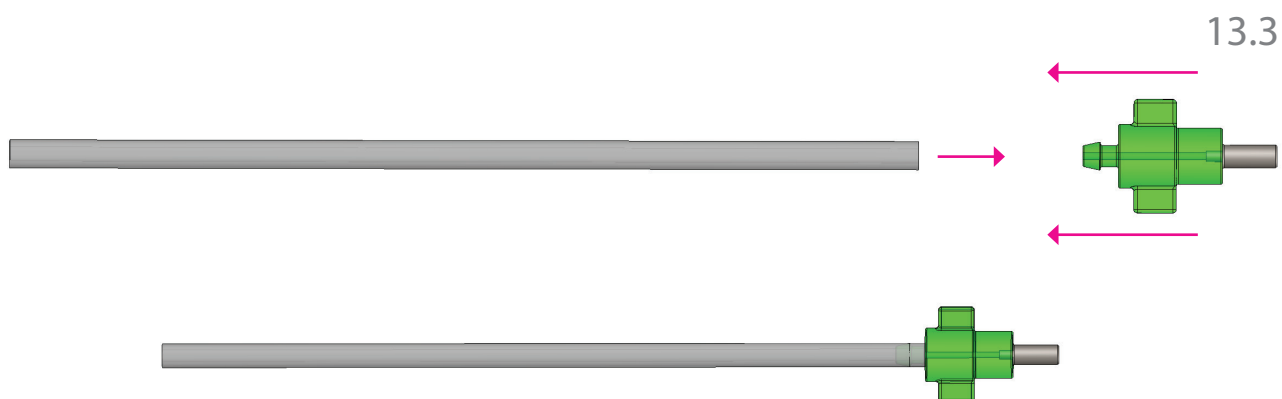


4 CM  $\pm$





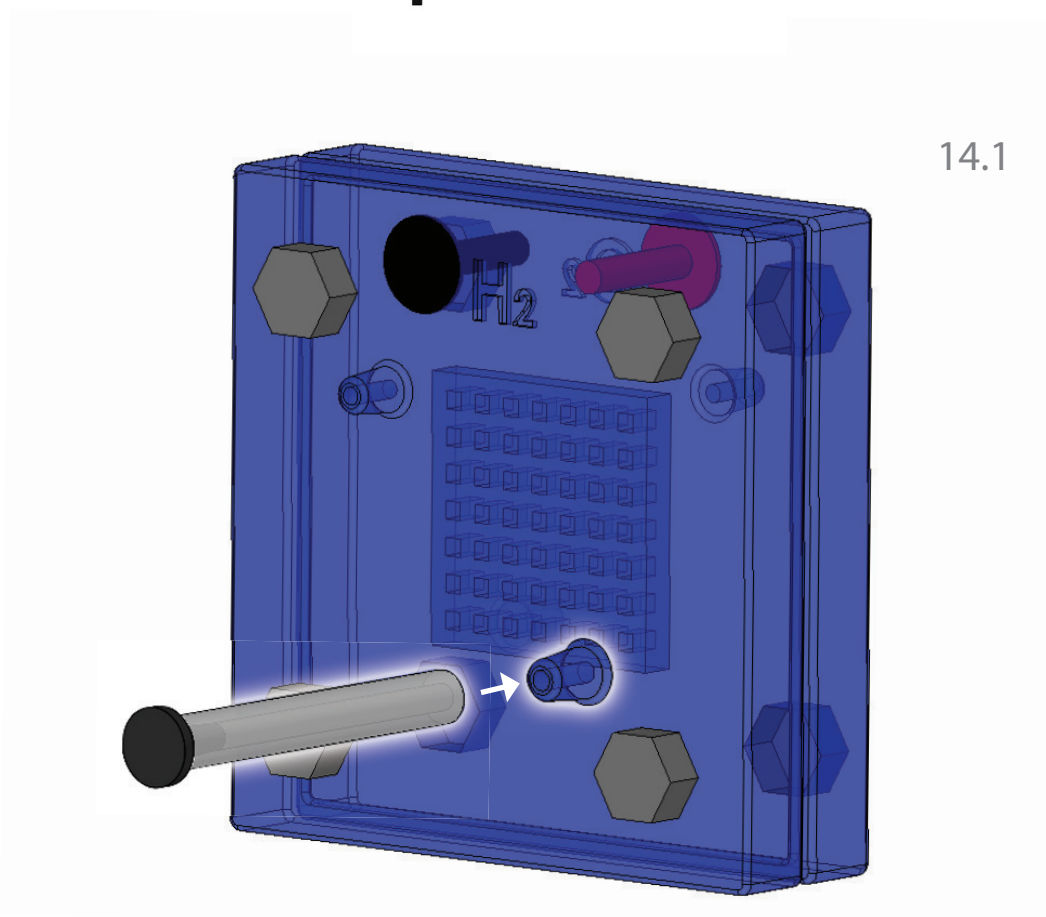
13.2



13.3

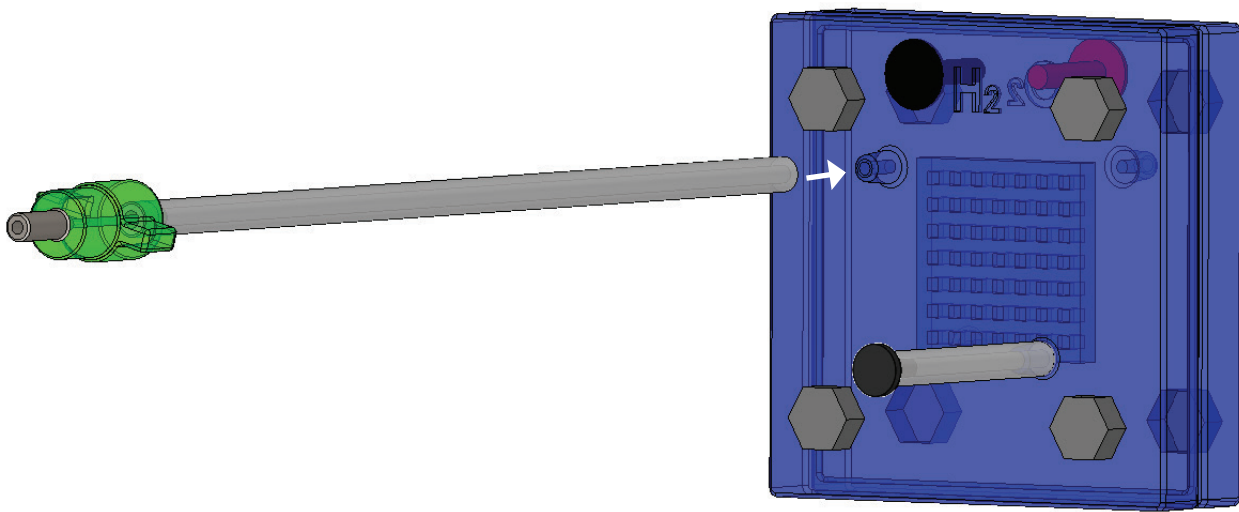


13.4

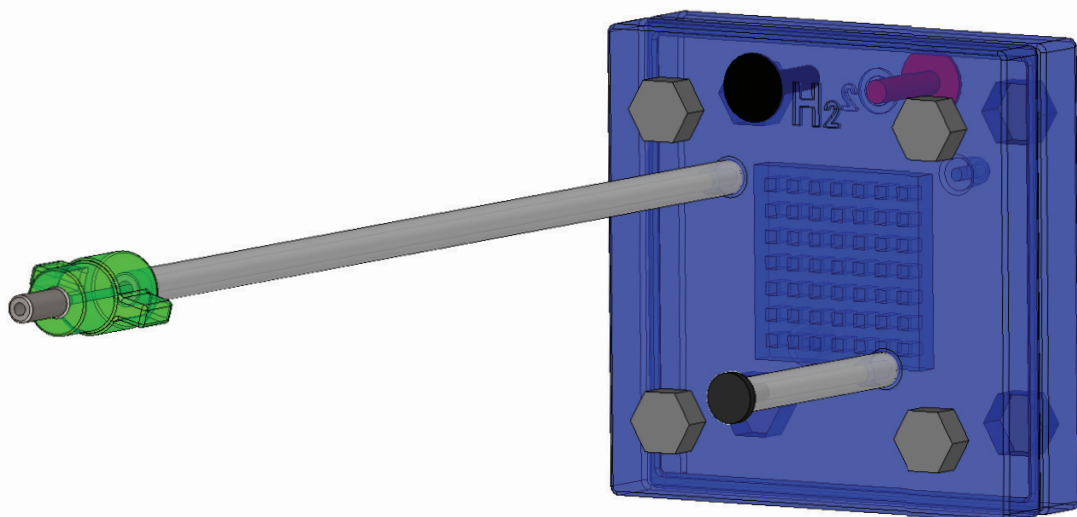


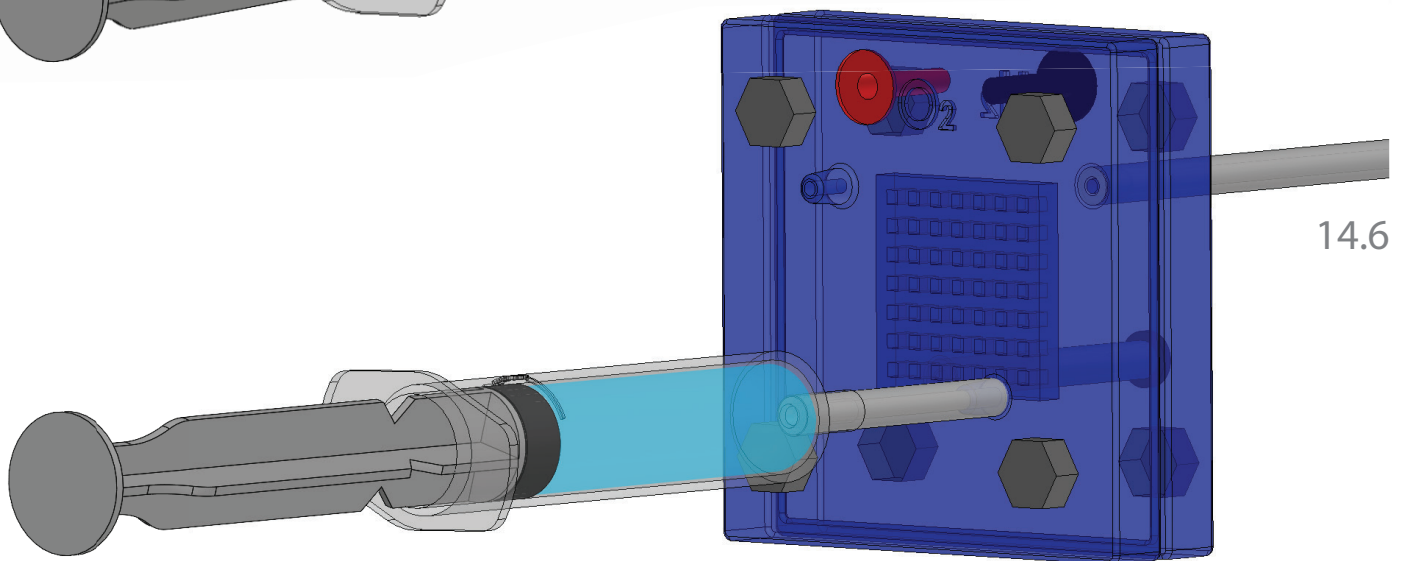
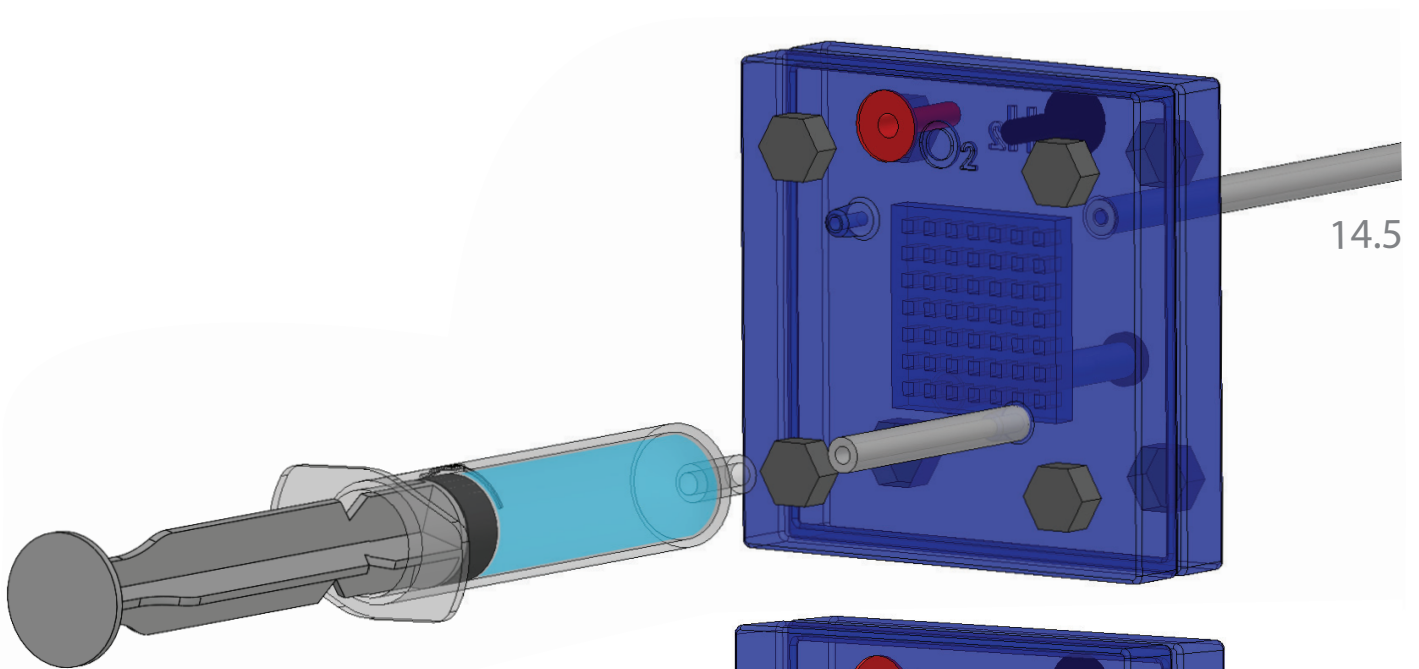
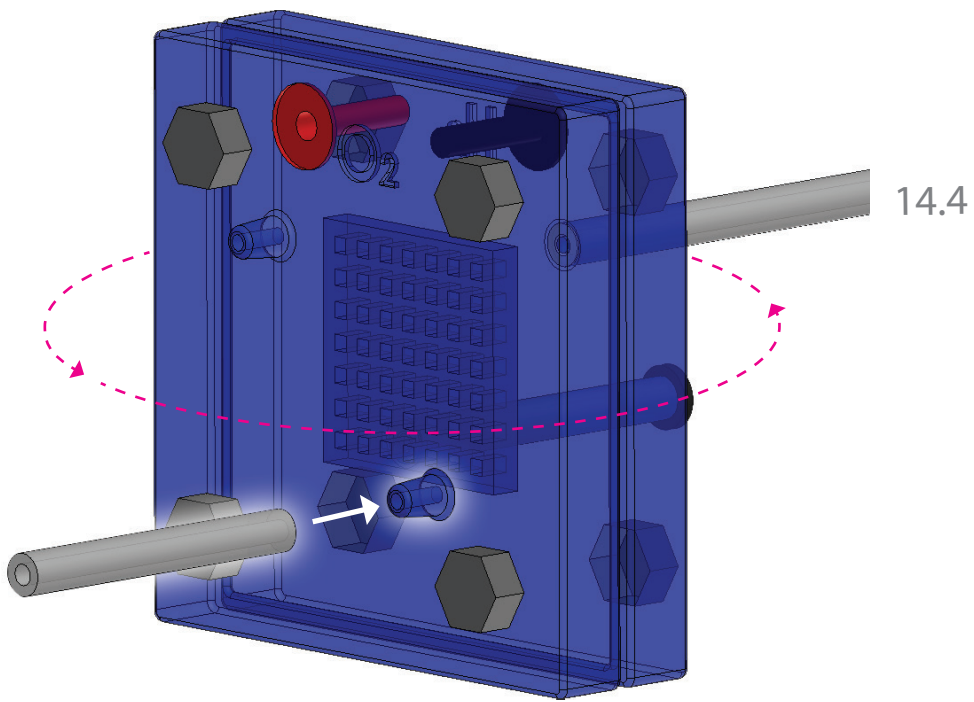
14.1

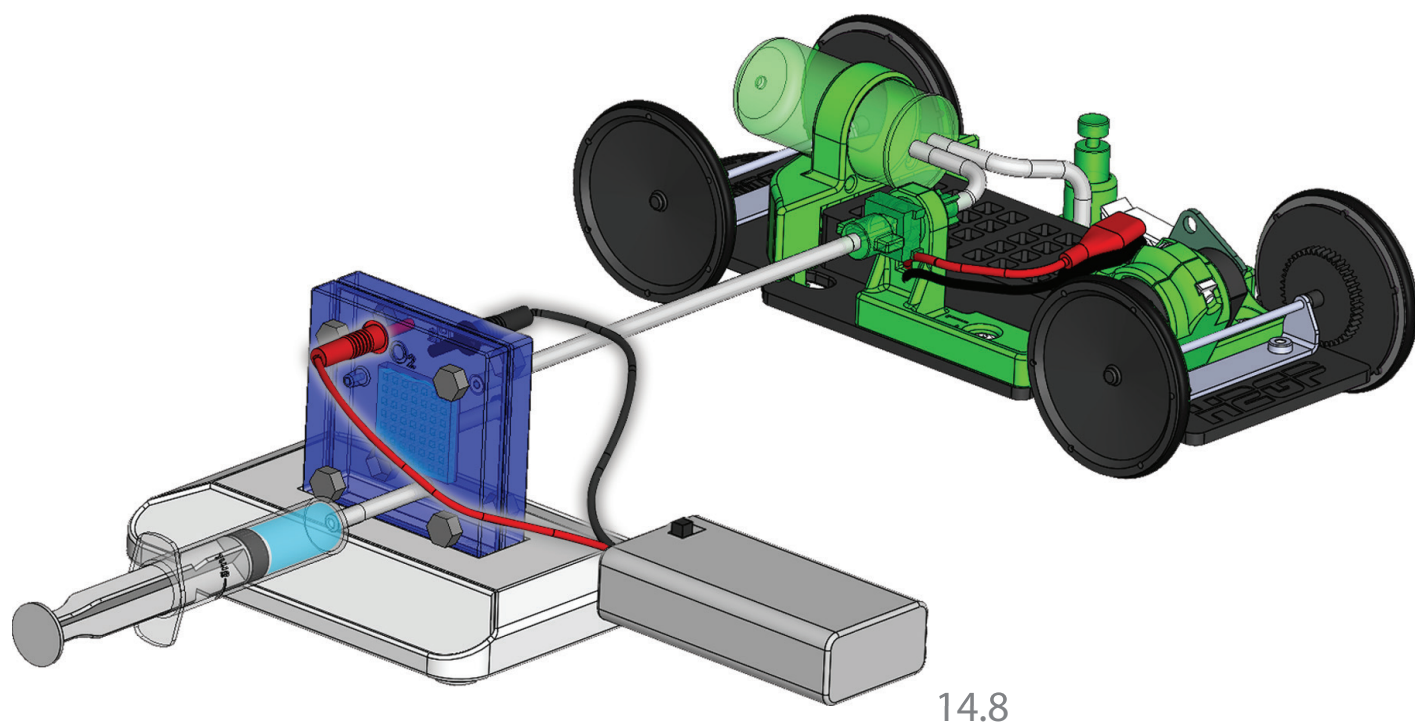
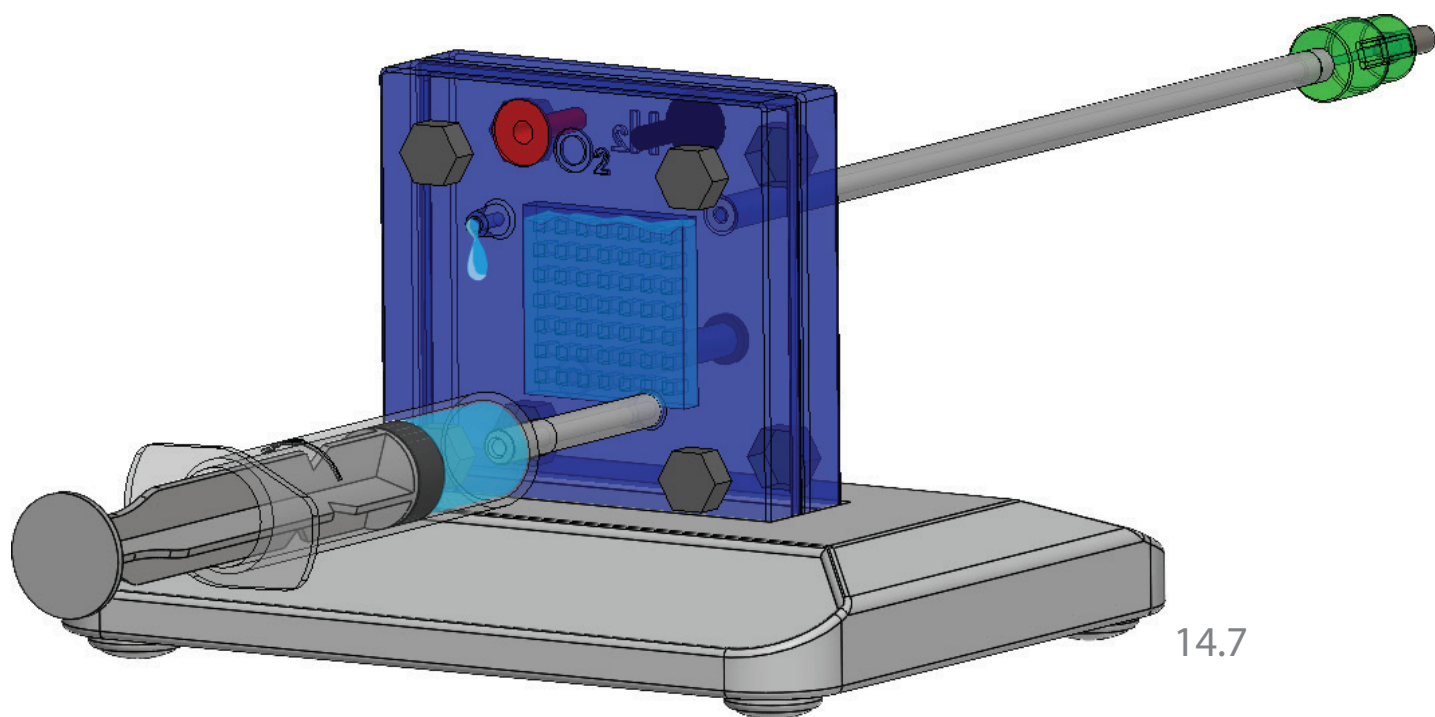
14.2



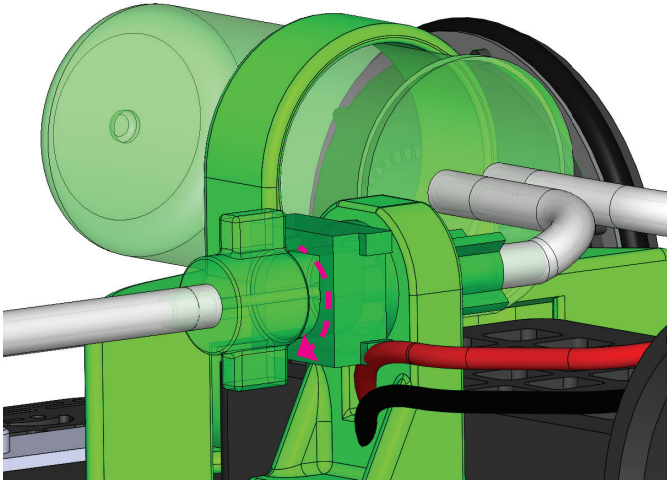
14.3



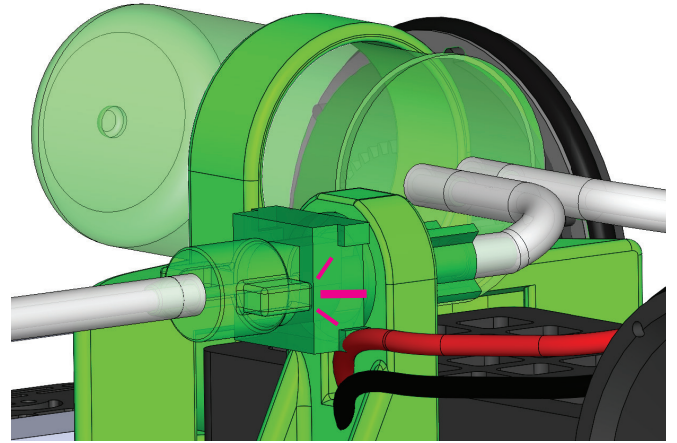




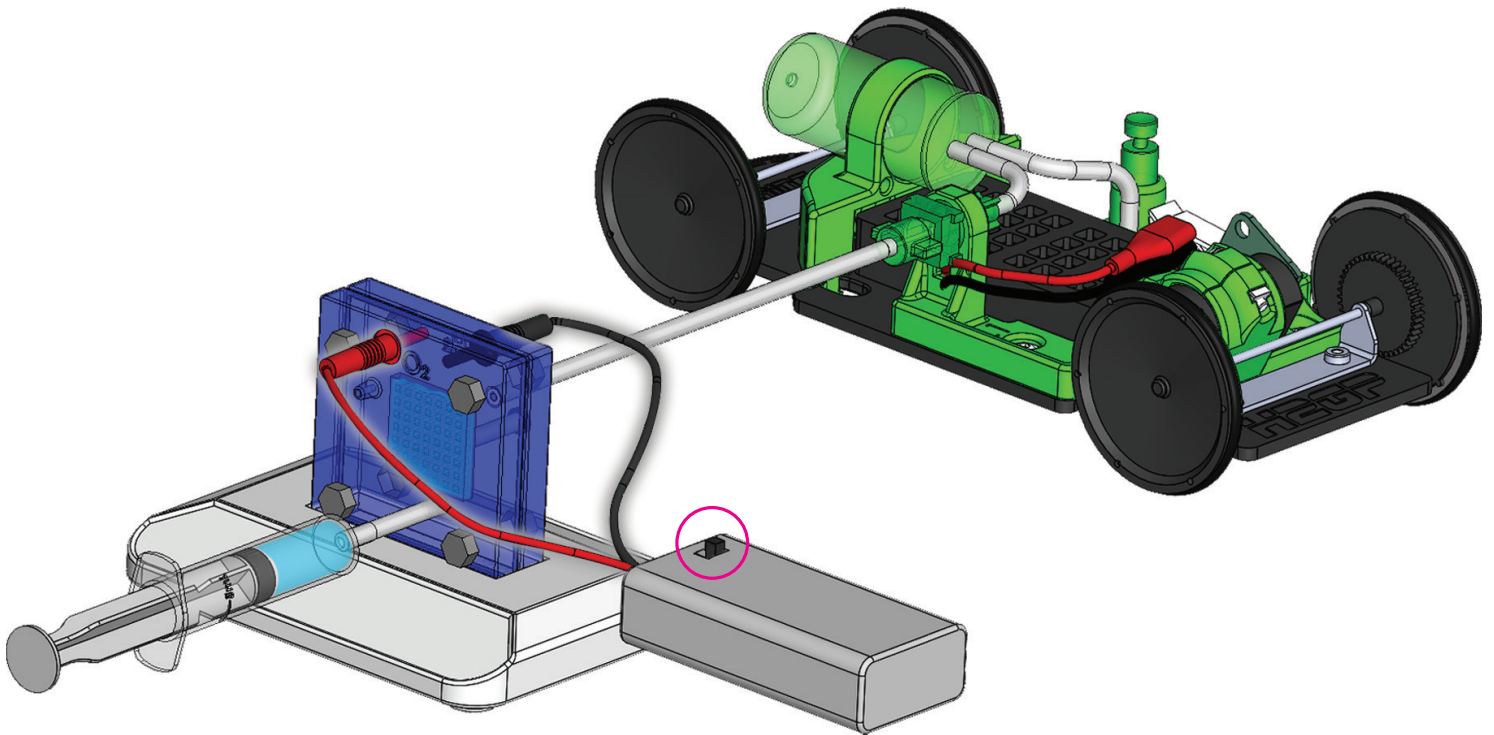




14.9



14.10



Have fun Experimenting!

Designed by  
**Horizon**  
Educational

**Design Race Innovate**

**horizoneducational.com**

+1 (424) 305-4671    +420 222 530 490    +61 405 913 115

**h2gp@horizoneducational.com**